

Product datasheet for **TA505809S**

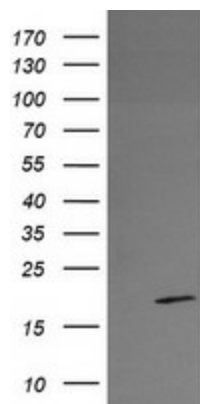
RFESD Mouse Monoclonal Antibody [Clone ID: OTI2A7]

Product data:

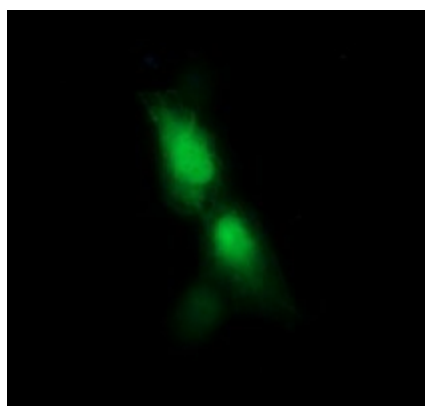
Product Type:	Primary Antibodies
Clone Name:	OTI2A7
Applications:	IF, WB
Recommended Dilution:	WB 1:4000, IF 1:100
Reactivity:	Human, Mouse
Host:	Mouse
Isotype:	IgG1
Clonality:	Monoclonal
Immunogen:	Full length human recombinant protein of human RFESD(NP_775498) produced in HEK293T cell.
Formulation:	PBS (pH 7.3) containing 1% BSA, 50% glycerol and 0.02% sodium azide.
Concentration:	1 mg/ml
Purification:	Purified from mouse ascites fluids or tissue culture supernatant by affinity chromatography (protein A/G)
Conjugation:	Unconjugated
Storage:	Store at -20°C as received.
Stability:	Stable for 12 months from date of receipt.
Predicted Protein Size:	17.6 kDa
Gene Name:	Rieske Fe-S domain containing
Database Link:	NP_775498 Entrez Gene 218341 Mouse Entrez Gene 317671 Human Q8TAC1
Synonyms:	Rieske (Fe-S) domain containing



[View online »](#)

Product images:

HEK293T cells were transfected with the pCMV6-ENTRY control (Cat# [PS100001], Left lane) or pCMV6-ENTRY RFESD (Cat# [RC207317], Right lane) cDNA for 48 hrs and lysed. Equivalent amounts of cell lysates (5 ug per lane) were separated by SDS-PAGE and immunoblotted with anti-RFESD (Cat# [TA505809]). Positive lysates [LY403551] (100ug) and [LC403551] (20ug) can be purchased separately from OriGene.



Anti-RFESD mouse monoclonal antibody ([TA505809]) immunofluorescent staining of COS7 cells transiently transfected by pCMV6-ENTRY RFESD ([RC207317]).