

## Product datasheet for **TA505795S**

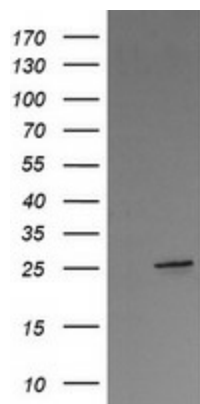
### VTI1A Mouse Monoclonal Antibody [Clone ID: OTI1E3]

#### Product data:

Product Type:	Primary Antibodies
Clone Name:	OTI1E3
Applications:	WB
Recommended Dilution:	WB 1:4000
Reactivity:	Human, Mouse, Rat
Host:	Mouse
Isotype:	IgG1
Clonality:	Monoclonal
Immunogen:	Full length human recombinant protein of human VTI1A(NP_660207) produced in HEK293T cell.
Formulation:	PBS (pH 7.3) containing 1% BSA, 50% glycerol and 0.02% sodium azide.
Concentration:	1 mg/ml
Purification:	Purified from mouse ascites fluids or tissue culture supernatant by affinity chromatography (protein A/G)
Conjugation:	Unconjugated
Storage:	Store at -20°C as received.
Stability:	Stable for 12 months from date of receipt.
Predicted Protein Size:	25 kDa
Gene Name:	vesicle transport through interaction with t-SNAREs 1A
Database Link:	<a href="#">NP_660207</a> <a href="#">Entrez Gene 53611 Mouse</a> <a href="#">Entrez Gene 65277 Rat</a> <a href="#">Entrez Gene 143187 Human</a> <a href="#">Q96AJ9</a>
Synonyms:	MMDS3; MVti1; Vti1-rp2; VTI1RP2
Protein Families:	Transmembrane
Protein Pathways:	SNARE interactions in vesicular transport



[View online »](#)

**Product images:**

HEK293T cells were transfected with the pCMV6-ENTRY control (Left lane) or pCMV6-ENTRY VT11A ([RC213934], Right lane) cDNA for 48 hrs and lysed. Equivalent amounts of cell lysates (5 ug per lane) were separated by SDS-PAGE and immunoblotted with anti-VT11A. Positive lysates [LY407945] (100ug) and [LC407945] (20ug) can be purchased separately from OriGene.