

Product datasheet for **TA505795M**

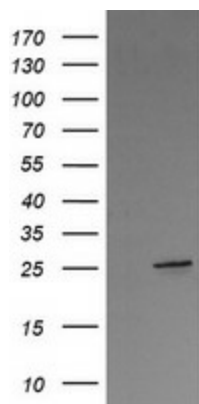
VTI1A Mouse Monoclonal Antibody [Clone ID: OTI1E3]

Product data:

| | |
|-------------------------|---|
| Product Type: | Primary Antibodies |
| Clone Name: | OTI1E3 |
| Applications: | WB |
| Recommended Dilution: | WB 1:4000 |
| Reactivity: | Human, Mouse, Rat |
| Host: | Mouse |
| Isotype: | IgG1 |
| Clonality: | Monoclonal |
| Immunogen: | Full length human recombinant protein of human VTI1A(NP_660207) produced in HEK293T cell. |
| Formulation: | PBS (pH 7.3) containing 1% BSA, 50% glycerol and 0.02% sodium azide. |
| Concentration: | 1 mg/ml |
| Purification: | Purified from mouse ascites fluids or tissue culture supernatant by affinity chromatography (protein A/G) |
| Conjugation: | Unconjugated |
| Storage: | Store at -20°C as received. |
| Stability: | Stable for 12 months from date of receipt. |
| Predicted Protein Size: | 25 kDa |
| Gene Name: | vesicle transport through interaction with t-SNAREs 1A |
| Database Link: | NP_660207 Entrez Gene 53611 Mouse Entrez Gene 65277 Rat Entrez Gene 143187 Human Q96AJ9 |
| Synonyms: | MMDS3; MVti1; Vti1-rp2; VTI1RP2 |
| Protein Families: | Transmembrane |
| Protein Pathways: | SNARE interactions in vesicular transport |


[View online »](#)

Product images:



HEK293T cells were transfected with the pCMV6-ENTRY control (Left lane) or pCMV6-ENTRY VTI1A ([RC213934], Right lane) cDNA for 48 hrs and lysed. Equivalent amounts of cell lysates (5 ug per lane) were separated by SDS-PAGE and immunoblotted with anti-VTI1A. Positive lysates [LY407945] (100ug) and [LC407945] (20ug) can be purchased separately from OriGene.