

## Product datasheet for **TA505787BM**

### **BBOX1 Mouse Monoclonal Antibody (HRP conjugated) [Clone ID: OTI2C8]**

#### **Product data:**

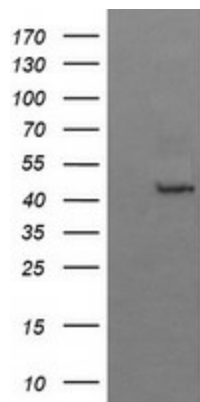
|                         |   |
|-------------------------|---|
| Product Type:           | Primary Antibodies  |
| Clone Name:             | OTI2C8  |
| Applications:           | IF, WB  |
| Recommended Dilution:   | WB 1:4000, IF 1:100   |
| Reactivity:             | Human, Mouse, Rat   |
| Host:                   | Mouse   |
| Isotype:                | IgG1  |
| Clonality:              | Monoclonal  |
| Immunogen:              | Full length human recombinant protein of human BBOX1(NP_003977) produced in HEK293T cell.   |
| Formulation:            | PBS (pH 7.3) containing 1% BSA, 50% glycerol.   |
| Concentration:          | 0.5 mg/ml   |
| Purification:           | Purified from mouse ascites fluids or tissue culture supernatant by affinity chromatography (protein A/G)   |
| Conjugation:            | HRP   |
| Storage:                | Store at -20°C as received.   |
| Stability:              | Stable for 12 months from date of receipt.  |
| Predicted Protein Size: | 44.5 kDa  |
| Gene Name:              | gamma-butyrobetaine hydroxylase 1   |
| Database Link:          | <a href="#">NP_003977</a><br><a href="#">Entrez Gene 170442 Mouse</a> <a href="#">Entrez Gene 8424 Human</a><br><a href="#">O75936</a>  |
| Background:             | This gene encodes gamma butyrobetaine hydroxylase which catalyzes the formation of L-carnitine from gamma-butyrobetaine, the last step in the L-carnitine biosynthetic pathway. Carnitine is essential for the transport of activated fatty acids across the mitochondrial membrane during mitochondrial beta-oxidation. [provided by RefSeq, Jul 2008] |
| Synonyms:               | BBH; BBOX; G-BBH; gamma-BBH   |



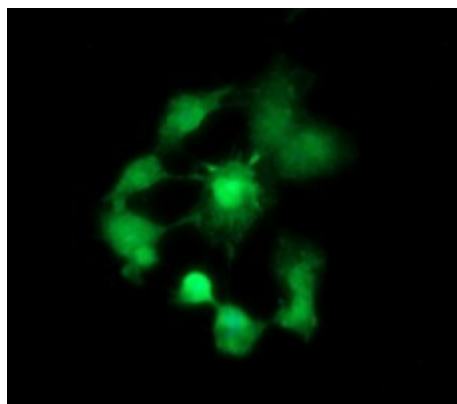
[View online »](#)

Protein Pathways: Lysine degradation

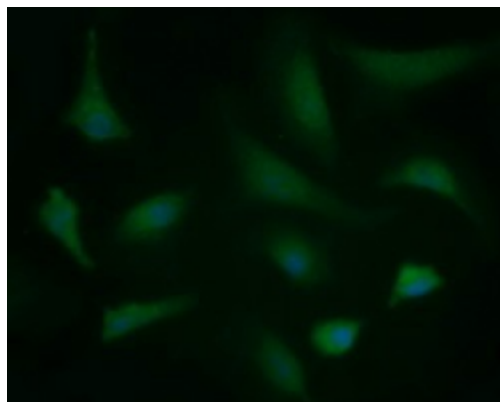
### Product images:



HEK293T cells were transfected with the pCMV6-ENTRY control (Left lane) or pCMV6-ENTRY BBOX1 ([RC203156], Right lane) cDNA for 48 hrs and lysed. Equivalent amounts of cell lysates (5 ug per lane) were separated by SDS-PAGE and immunoblotted with anti-BBOX1. Positive lysates [LY418299] (100ug) and [LC418299] (20ug) can be purchased separately from OriGene.



Anti-BBOX1 mouse monoclonal antibody ([TA505787]) immunofluorescent staining of COS7 cells transiently transfected by pCMV6-ENTRY BBOX1 ([RC203156]).



Immunofluorescent staining of HeLa cells using anti-BBOX1 mouse monoclonal antibody ([TA505787]).