

Product datasheet for **TA505753M**

BBOX1 Mouse Monoclonal Antibody [Clone ID: OTI4F9]

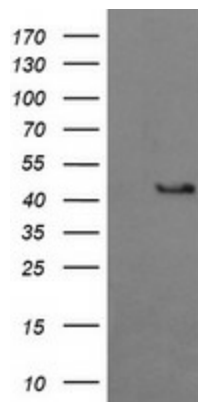
Product data:

Product Type:	Primary Antibodies
Clone Name:	OTI4F9
Applications:	IF, IHC, WB
Recommended Dilution:	WB 1:4000, IHC 1:150, IF 1:100
Reactivity:	Human, Mouse, Rat
Host:	Mouse
Isotype:	IgG1
Clonality:	Monoclonal
Immunogen:	Full length human recombinant protein of human BBOX1(NP_003977) produced in HEK293T cell.
Formulation:	PBS (pH 7.3) containing 1% BSA, 50% glycerol and 0.02% sodium azide.
Concentration:	1 mg/ml
Purification:	Purified from mouse ascites fluids or tissue culture supernatant by affinity chromatography (protein A/G)
Conjugation:	Unconjugated
Storage:	Store at -20°C as received.
Stability:	Stable for 12 months from date of receipt.
Predicted Protein Size:	44.5 kDa
Gene Name:	gamma-butyrobetaine hydroxylase 1
Database Link:	NP_003977 Entrez Gene 170442 Mouse Entrez Gene 8424 Human O75936
Background:	This gene encodes gamma butyrobetaine hydroxylase which catalyzes the formation of L-carnitine from gamma-butyrobetaine, the last step in the L-carnitine biosynthetic pathway. Carnitine is essential for the transport of activated fatty acids across the mitochondrial membrane during mitochondrial beta-oxidation. [provided by RefSeq, Jul 2008]
Synonyms:	BBH; BBOX; G-BBH; gamma-BBH

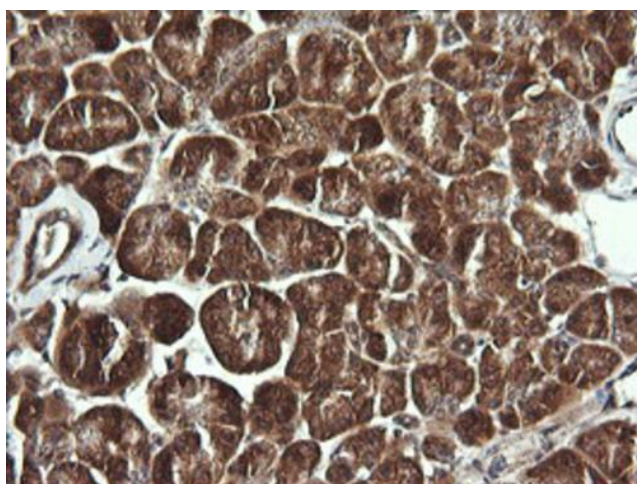

[View online »](#)

Protein Pathways: Lysine degradation

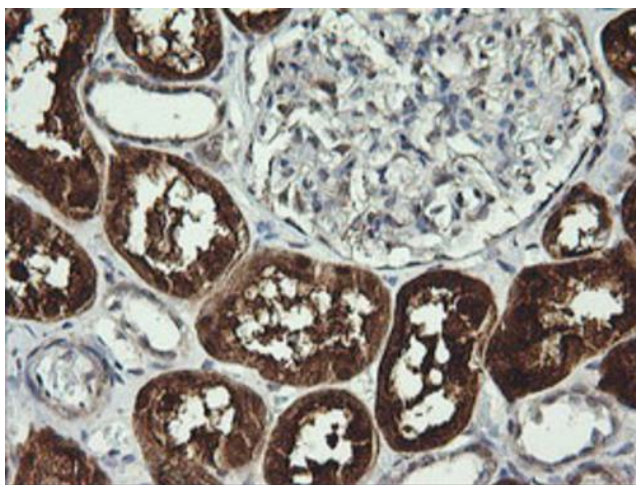
Product images:



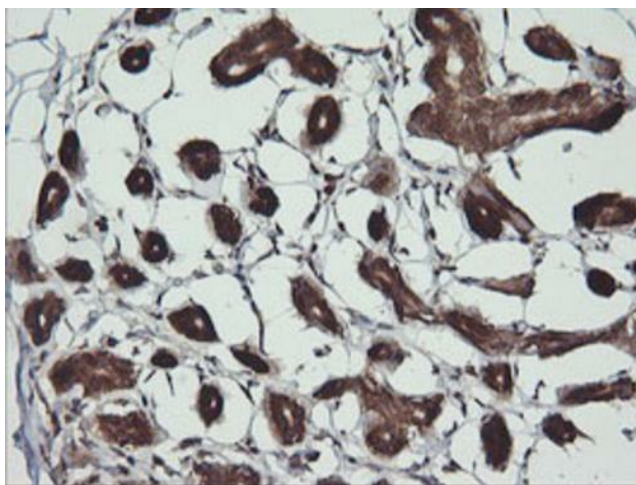
HEK293T cells were transfected with the pCMV6-ENTRY control (Cat# [PS100001], Left lane) or pCMV6-ENTRY BBOX1 (Cat# [RC203156], Right lane) cDNA for 48 hrs and lysed. Equivalent amounts of cell lysates (5 ug per lane) were separated by SDS-PAGE and immunoblotted with anti-BBOX1 (Cat# [TA505753]). Positive lysates [LY418299] (100ug) and [LC418299] (20ug) can be purchased separately from OriGene.



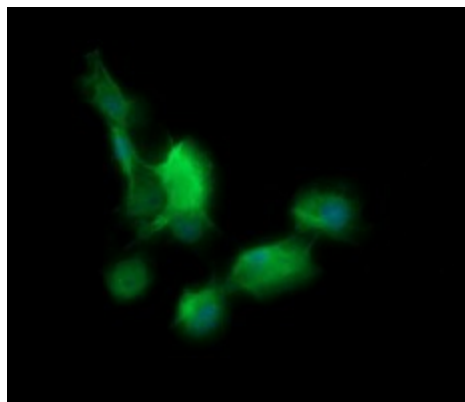
Immunohistochemical staining of paraffin-embedded Human pancreas tissue within the normal limits using anti-BBOX1 mouse monoclonal antibody. Heat-induced epitope retrieval by EDTA solution buffer pH 8.0 at 120°C for 3 min.



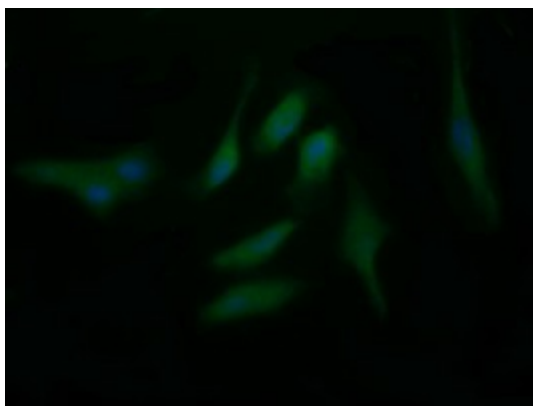
Immunohistochemical staining of paraffin-embedded Human Kidney tissue within the normal limits using anti-BBOX1 mouse monoclonal antibody. Heat-induced epitope retrieval by EDTA solution buffer pH 8.0 at 120°C for 3 min.



Immunohistochemical staining of paraffin-embedded Human breast tissue within the normal limits using anti-BBOX1 mouse monoclonal antibody. Heat-induced epitope retrieval by EDTA solution buffer pH 8.0 at 120°C for 3 min.



Anti-BBOX1 mouse monoclonal antibody ([TA505753]) immunofluorescent staining of COS7 cells transiently transfected by pCMV6-ENTRY BBOX1 ([RC203156]).



Immunofluorescent staining of HeLa cells using anti-BBOX1 mouse monoclonal antibody ([TA505753]).