

## Product datasheet for **TA505753BM**

### **BBOX1 Mouse Monoclonal Antibody (HRP conjugated) [Clone ID: OTI4F9]**

#### **Product data:**

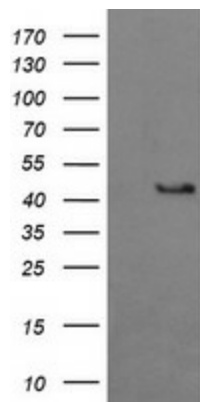
|                                |   |
|--------------------------------|---|
| <b>Product Type:</b>           | Primary Antibodies  |
| <b>Clone Name:</b>             | OTI4F9  |
| <b>Applications:</b>           | IF, IHC, WB   |
| <b>Recommended Dilution:</b>   | WB 1:4000, IHC 1:150, IF 1:100  |
| <b>Reactivity:</b>             | Human, Mouse, Rat   |
| <b>Host:</b>                   | Mouse   |
| <b>Isotype:</b>                | IgG1  |
| <b>Clonality:</b>              | Monoclonal  |
| <b>Immunogen:</b>              | Full length human recombinant protein of human BBOX1(NP_003977) produced in HEK293T cell.   |
| <b>Formulation:</b>            | PBS (pH 7.3) containing 1% BSA, 50% glycerol.   |
| <b>Concentration:</b>          | 0.5 mg/ml   |
| <b>Purification:</b>           | Purified from mouse ascites fluids or tissue culture supernatant by affinity chromatography (protein A/G)   |
| <b>Conjugation:</b>            | HRP   |
| <b>Storage:</b>                | Store at -20°C as received.   |
| <b>Stability:</b>              | Stable for 12 months from date of receipt.  |
| <b>Predicted Protein Size:</b> | 44.5 kDa  |
| <b>Gene Name:</b>              | gamma-butyrobetaine hydroxylase 1   |
| <b>Database Link:</b>          | <a href="#">NP_003977</a><br><a href="#">Entrez Gene 170442 Mouse</a> <a href="#">Entrez Gene 8424 Human</a><br><a href="#">O75936</a>  |
| <b>Background:</b>             | This gene encodes gamma butyrobetaine hydroxylase which catalyzes the formation of L-carnitine from gamma-butyrobetaine, the last step in the L-carnitine biosynthetic pathway. Carnitine is essential for the transport of activated fatty acids across the mitochondrial membrane during mitochondrial beta-oxidation. [provided by RefSeq, Jul 2008] |
| <b>Synonyms:</b>               | BBH; BBOX; G-BBH; gamma-BBH   |



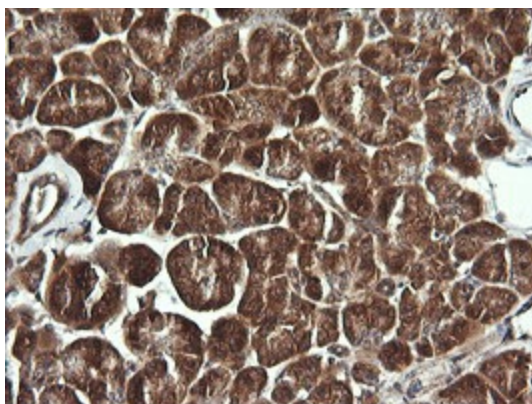
[View online »](#)

Protein Pathways: Lysine degradation

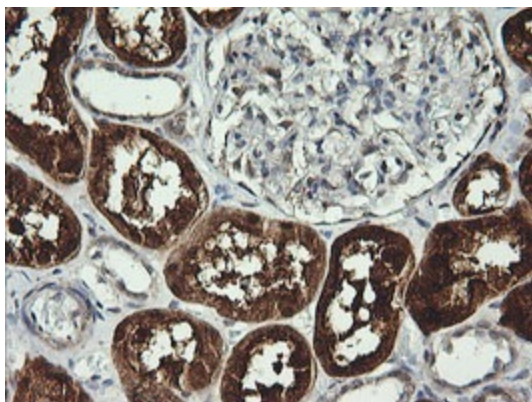
**Product images:**



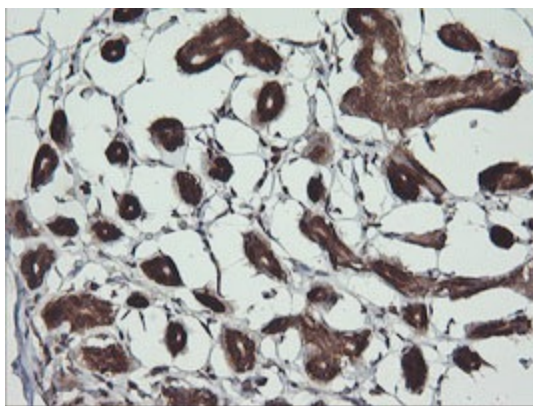
HEK293T cells were transfected with the pCMV6-ENTRY control (Cat# [PS100001], Left lane) or pCMV6-ENTRY BBOX1 (Cat# [RC203156], Right lane) cDNA for 48 hrs and lysed. Equivalent amounts of cell lysates (5 ug per lane) were separated by SDS-PAGE and immunoblotted with anti-BBOX1 (Cat# [TA505753]). Positive lysates [LY418299] (100ug) and [LC418299] (20ug) can be purchased separately from OriGene.



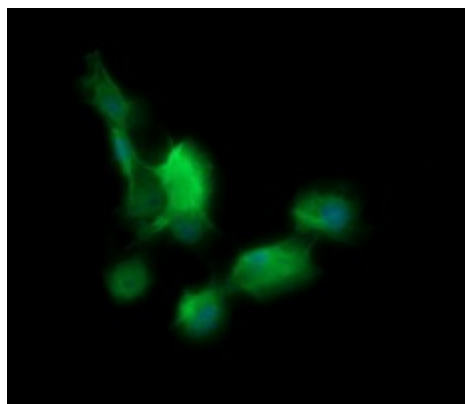
Immunohistochemical staining of paraffin-embedded Human pancreas tissue within the normal limits using anti-BBOX1 mouse monoclonal antibody. (Heat-induced epitope retrieval by 10mM citric buffer, pH6.0, 120°C for 3min, [TA505753])



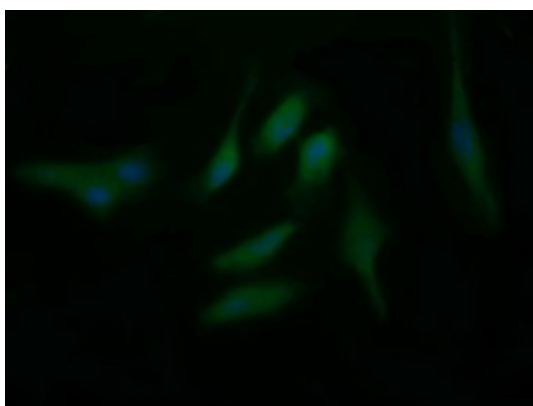
Immunohistochemical staining of paraffin-embedded Human Kidney tissue within the normal limits using anti-BBOX1 mouse monoclonal antibody. (Heat-induced epitope retrieval by 10mM citric buffer, pH6.0, 120°C for 3min, [TA505753])



Immunohistochemical staining of paraffin-embedded Human breast tissue within the normal limits using anti-BBOX1 mouse monoclonal antibody. (Heat-induced epitope retrieval by 10mM citric buffer, pH6.0, 120°C for 3min, [TA505753])



Anti-BBOX1 mouse monoclonal antibody ([TA505753]) immunofluorescent staining of COS7 cells transiently transfected by pCMV6-ENTRY BBOX1 ([RC203156]).



Immunofluorescent staining of HeLa cells using anti-BBOX1 mouse monoclonal antibody ([TA505753]).