

## Product datasheet for **TA505714BM**

### PARVB Mouse Monoclonal Antibody (HRP conjugated) [Clone ID: OTI2H9]

#### Product data:

Product Type:	Primary Antibodies
Clone Name:	OTI2H9
Applications:	IHC, WB
Recommended Dilution:	WB 1:2000, IHC 1:150
Reactivity:	Human, Mouse, Rat
Host:	Mouse
Isotype:	IgG1
Clonality:	Monoclonal
Immunogen:	Full length human recombinant protein of human PARVB (NP_037459) produced in HEK293T cell.
Formulation:	PBS (pH 7.3) containing 1% BSA, 50% glycerol.
Concentration:	0.5 mg/ml
Purification:	Purified from mouse ascites fluids or tissue culture supernatant by affinity chromatography (protein A/G)
Conjugation:	HRP
Storage:	Store at -20°C as received.
Stability:	Stable for 12 months from date of receipt.
Predicted Protein Size:	41.5 kDa
Gene Name:	parvin beta
Database Link:	<a href="#">NP_037459</a> <a href="#">Entrez Gene 170736 Mouse</a> <a href="#">Entrez Gene 362973 Rat</a> <a href="#">Entrez Gene 29780 Human</a> <a href="#">Q9HBI1</a>
Background:	This gene encodes a member of the parvin family of actin-binding proteins, which play a role in cytoskeleton organization and cell adhesion. These proteins are associated with focal contacts and contain calponin homology domains that bind to actin filaments. This family member binds to alphaPIX and alpha-actinin, and it can inhibit the activity of integrin-linked kinase. This protein also functions in tumor suppression. Alternative splicing of this gene results in multiple transcript variants. [provided by RefSeq, Aug 2011]

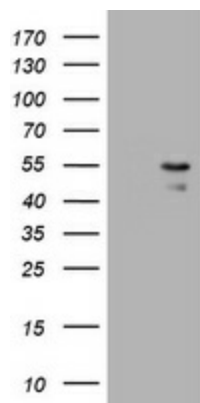


[View online »](#)

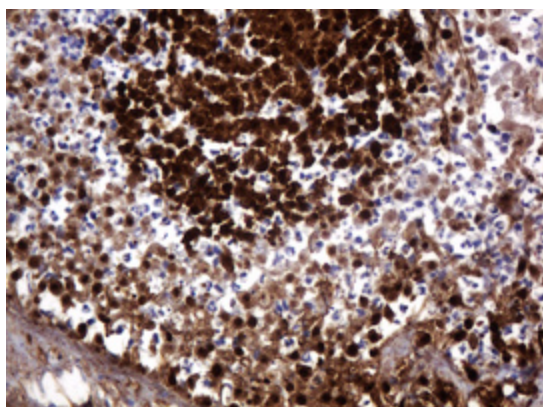
Synonyms: CGI-56

Protein Pathways: Focal adhesion

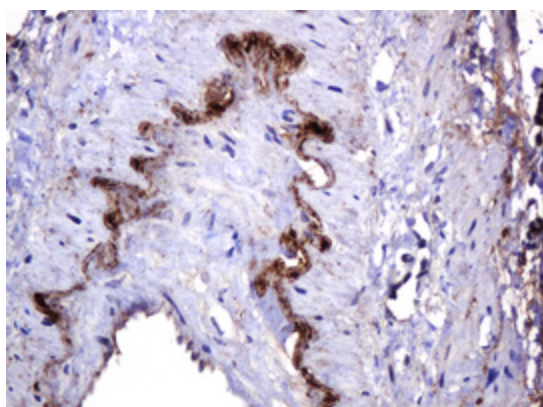
### Product images:



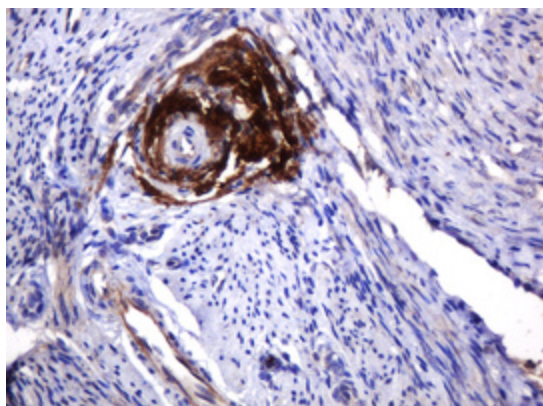
HEK293T cells were transfected with the pCMV6-ENTRY control (Left lane) or pCMV6-ENTRY PARVB ([RC208490], Right lane) cDNA for 48 hrs and lysed. Equivalent amounts of cell lysates (5 ug per lane) were separated by SDS-PAGE and immunoblotted with anti-PARVB. Positive lysates [LY415629] (100ug) and [LC415629] (20ug) can be purchased separately from OriGene.



Immunohistochemical staining of paraffin-embedded Adenocarcinoma of Human colon tissue using anti-PARVB mouse monoclonal antibody. (Heat-induced epitope retrieval by 10mM citric buffer, pH6.0, 120°C for 3min, [TA505714])



Immunohistochemical staining of paraffin-embedded Human pancreas tissue within the normal limits using anti-PARVB mouse monoclonal antibody. (Heat-induced epitope retrieval by 10mM citric buffer, pH6.0, 120°C for 3min, [TA505714])



Immunohistochemical staining of paraffin-embedded Human endometrium tissue within the normal limits using anti-PARVB mouse monoclonal antibody. (Heat-induced epitope retrieval by 10mM citric buffer, pH6.0, 120°C for 3min, [TA505714])