

## Product datasheet for **TA505711**

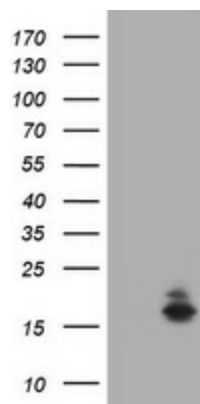
### **ATXN7L1 Mouse Monoclonal Antibody [Clone ID: OTI4A7]**

#### **Product data:**

<b>Product Type:</b>	Primary Antibodies
<b>Clone Name:</b>	OTI4A7
<b>Applications:</b>	WB
<b>Recommended Dilution:</b>	WB 1:2000
<b>Reactivity:</b>	Human, Mouse, Rat
<b>Host:</b>	Mouse
<b>Isotype:</b>	IgG2b
<b>Clonality:</b>	Monoclonal
<b>Immunogen:</b>	Full length human recombinant protein of human ATXN7L1 (NP_689962) produced in HEK293T cell.
<b>Formulation:</b>	PBS (pH 7.3) containing 1% BSA, 50% glycerol and 0.02% sodium azide.
<b>Concentration:</b>	1 mg/ml
<b>Purification:</b>	Purified from mouse ascites fluids or tissue culture supernatant by affinity chromatography (protein A/G)
<b>Conjugation:</b>	Unconjugated
<b>Storage:</b>	Store at -20°C as received.
<b>Stability:</b>	Stable for 12 months from date of receipt.
<b>Predicted Protein Size:</b>	16 kDa
<b>Gene Name:</b>	ataxin 7 like 1
<b>Database Link:</b>	<a href="#">NP_689962</a> <a href="#">Entrez Gene 380753 Mouse</a> <a href="#">Entrez Gene 222255 Human</a> <a href="#">Q9ULK2</a>
<b>Synonyms:</b>	ATXN7L4



[View online »](#)

**Product images:**

HEK293T cells were transfected with the pCMV6-ENTRY control (Left lane) or pCMV6-ENTRY ATXN7L1 ([RC206079], Right lane) cDNA for 48 hrs and lysed. Equivalent amounts of cell lysates (5 ug per lane) were separated by SDS-PAGE and immunoblotted with anti-ATXN7L1. Positive lysates [LY407300] (100ug) and [LC407300] (20ug) can be purchased separately from OriGene.