

## Product datasheet for **TA505699AM**

### TRMT1 (TRMU) Mouse Monoclonal Antibody (Biotin conjugated) [Clone ID: OTI2A4]

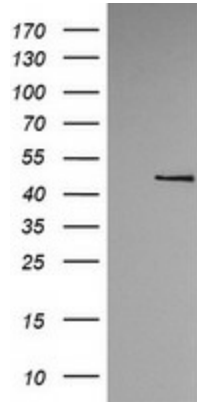
#### Product data:

Product Type:	Primary Antibodies
Clone Name:	OTI2A4
Applications:	IF, WB
Recommended Dilution:	WB 1:200~4000, IF 1:100
Reactivity:	Human, Dog, Monkey, Mouse, Rat
Host:	Mouse
Isotype:	IgG2a
Clonality:	Monoclonal
Immunogen:	Full length human recombinant protein of human TRMU(NP_060476) produced in HEK293T cell.
Formulation:	PBS (pH 7.3) containing 1% BSA, 50% glycerol and 0.02% sodium azide.
Concentration:	0.5 mg/ml
Purification:	Purified from mouse ascites fluids or tissue culture supernatant by affinity chromatography (protein A/G)
Conjugation:	Biotin
Storage:	Store at -20°C as received.
Stability:	Stable for 12 months from date of receipt.
Predicted Protein Size:	47.6 kDa
Gene Name:	tRNA mitochondrial 2-thiouridylase
Database Link:	<a href="#">NP_060476</a> <a href="#">Entrez Gene 72026 Mouse</a> <a href="#">Entrez Gene 362976 Rat</a> <a href="#">Entrez Gene 481204 Dog</a> <a href="#">Entrez Gene 714268 Monkey</a> <a href="#">Entrez Gene 55687 Human</a> <a href="#">O75648</a>
Synonyms:	LCAL3; MTO2; MTU1; TRMT; TRMT1; TRNT1

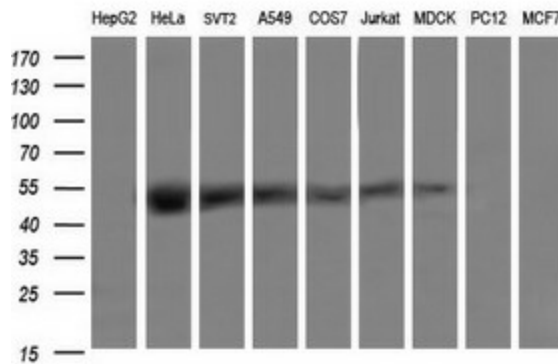


[View online »](#)

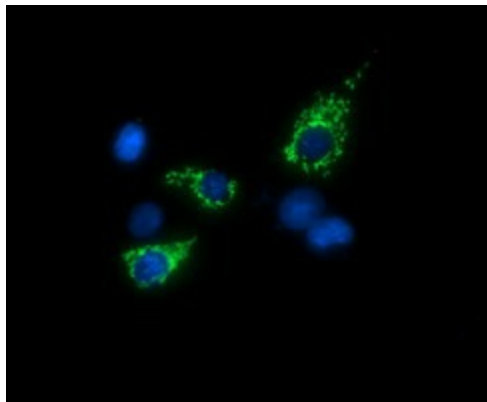
**Product images:**



HEK293T cells were transfected with the pCMV6-ENTRY control (Cat# [PS100001], Left lane) or pCMV6-ENTRY TRMU (Cat# [RC219032], Right lane) cDNA for 48 hrs and lysed. Equivalent amounts of cell lysates (5 ug per lane) were separated by SDS-PAGE and immunoblotted with anti-TRMU (Cat# [TA505699]). Positive lysates [LY402642] (100ug) and [LC402642] (20ug) can be purchased separately from OriGene.



Western blot analysis of extracts (35ug) from 9 different cell lines by using anti-TRMU monoclonal antibody (HepG2: human; HeLa: human; SVT2: mouse; A549: human; COS7: monkey; Jurkat: human; MDCK: canine; PC12: rat; MCF7: human).



Anti-TRMU mouse monoclonal antibody ([TA505699]) immunofluorescent staining of COS7 cells transiently transfected by pCMV6-ENTRY TRMU ([RC219032]).