

Product datasheet for **TA505696BM**

p16 ARC (ARPC5) Mouse Monoclonal Antibody (HRP conjugated) [Clone ID: OTI2G1]

Product data:

Product Type:	Primary Antibodies
Clone Name:	OTI2G1
Applications:	IHC, WB
Recommended Dilution:	WB 1:2000, IHC 1:150
Reactivity:	Human, Mouse, Rat
Host:	Mouse
Isotype:	IgG1
Clonality:	Monoclonal
Immunogen:	Full length human recombinant protein of human ARPC5 (NP_005708) produced in HEK293T cell.
Formulation:	PBS (pH 7.4) containing 1% BSA, 50% glycerol.
Concentration:	0.5 mg/ml
Purification:	Purified from mouse ascites fluids or tissue culture supernatant by affinity chromatography (protein A/G)
Conjugation:	HRP
Storage:	Store at -20°C as received.
Stability:	Stable for 12 months from date of receipt.
Predicted Protein Size:	16.1 kDa
Gene Name:	actin related protein 2/3 complex subunit 5
Database Link:	NP_005708 Entrez Gene 67771 Mouse Entrez Gene 360854 Rat Entrez Gene 10092 Human O15511
Background:	This gene encodes one of seven subunits of the human Arp2/3 protein complex. The Arp2/3 protein complex has been implicated in the control of actin polymerization in cells and has been conserved through evolution. The exact role of the protein encoded by this gene, the p16 subunit, has yet to be determined. Alternatively spliced transcript variants encoding different isoforms have been observed for this gene. [provided by RefSeq, Jul

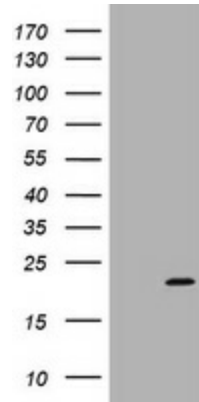


[View online »](#)

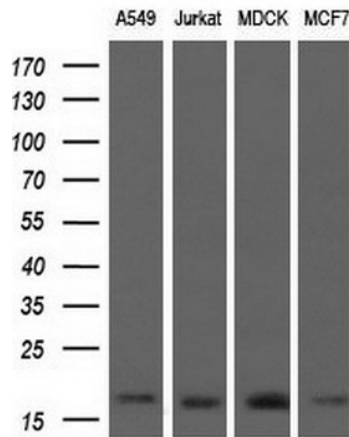
Synonyms: ARC16; dj127C7.3; p16-Arc

Protein Pathways: Fc gamma R-mediated phagocytosis, Pathogenic Escherichia coli infection, Regulation of actin cytoskeleton

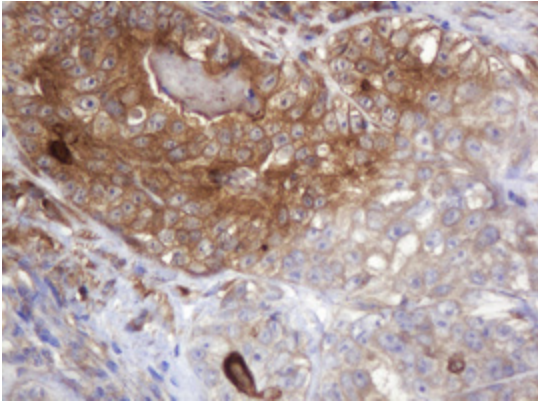
Product images:



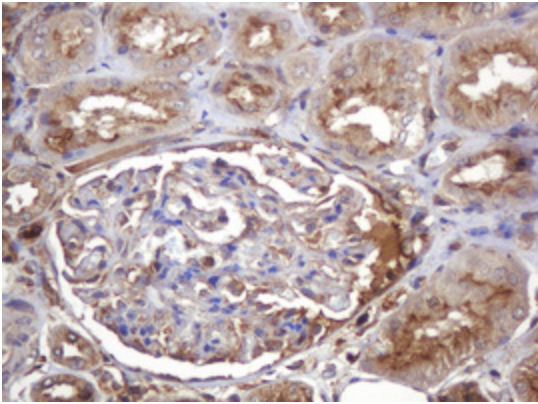
HEK293T cells were transfected with the pCMV6-ENTRY control (Cat# [PS100001], Left lane) or pCMV6-ENTRY ARPC5 (Cat# [RC212631], Right lane) cDNA for 48 hrs and lysed. Equivalent amounts of cell lysates (5 ug per lane) were separated by SDS-PAGE and immunoblotted with anti-ARPC5(Cat# [TA505696]). Positive lysates [LY417115] (100ug) and [LC417115] (20ug) can be purchased separately from OriGene.



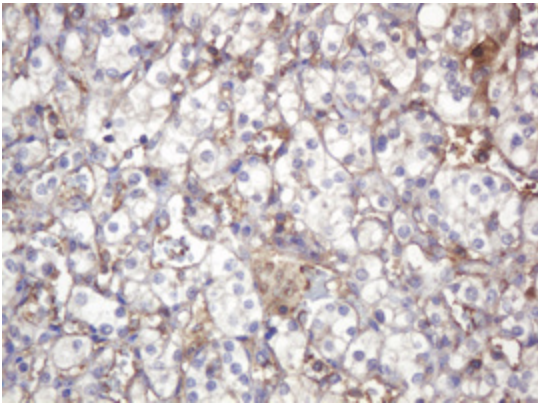
Western blot analysis of extracts (10ug) from 4 different cell lines by using anti-ARPC5 monoclonal antibody at 1:200 dilution.



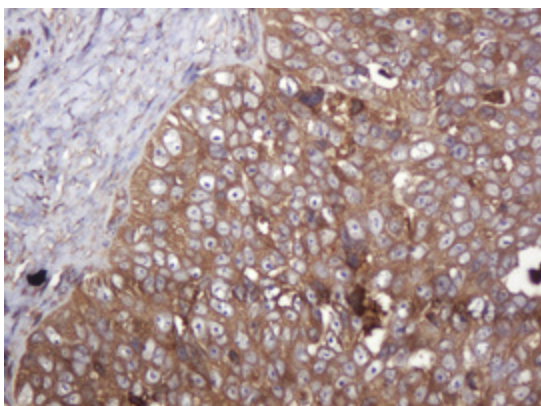
Immunohistochemical staining of paraffin-embedded Adenocarcinoma of Human colon tissue using anti-ARPC5 mouse monoclonal antibody. (Heat-induced epitope retrieval by 10mM citric buffer, pH6.0, 120°C for 3min, [TA505696])



Immunohistochemical staining of paraffin-embedded Human Kidney tissue within the normal limits using anti-ARPC5 mouse monoclonal antibody. (Heat-induced epitope retrieval by 10mM citric buffer, pH6.0, 120°C for 3min, [TA505696])



Immunohistochemical staining of paraffin-embedded Carcinoma of Human kidney tissue using anti-ARPC5 mouse monoclonal antibody. (Heat-induced epitope retrieval by 10mM citric buffer, pH6.0, 120°C for 3min, [TA505696])



Immunohistochemical staining of paraffin-embedded Adenocarcinoma of Human ovary tissue using anti-ARPC5 mouse monoclonal antibody. (Heat-induced epitope retrieval by 10mM citric buffer, pH6.0, 120°C for 3min, [TA505696])