

Product datasheet for **TA505692AM**

C10orf7 (CDC123) Mouse Monoclonal Antibody (Biotin conjugated) [Clone ID: OTI2D4]

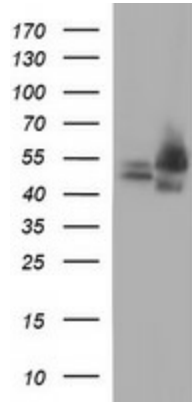
Product data:

Product Type:	Primary Antibodies
Clone Name:	OTI2D4
Applications:	IHC, WB
Recommended Dilution:	WB 1:4000, IHC 1:150
Reactivity:	Human, Mouse, Rat
Host:	Mouse
Isotype:	IgG2b
Clonality:	Monoclonal
Immunogen:	Full length human recombinant protein of human CDC123(NP_006014) produced in HEK293T cell.
Formulation:	PBS (pH 7.3) containing 1% BSA, 50% glycerol and 0.02% sodium azide.
Concentration:	0.5 mg/ml
Purification:	Purified from mouse ascites fluids or tissue culture supernatant by affinity chromatography (protein A/G)
Conjugation:	Biotin
Storage:	Store at -20°C as received.
Stability:	Stable for 12 months from date of receipt.
Predicted Protein Size:	39 kDa
Gene Name:	cell division cycle 123
Database Link:	NP_006014 Entrez Gene 98828 Mouse Entrez Gene 116656 Rat Entrez Gene 8872 Human O75794
Synonyms:	C10orf7; D123

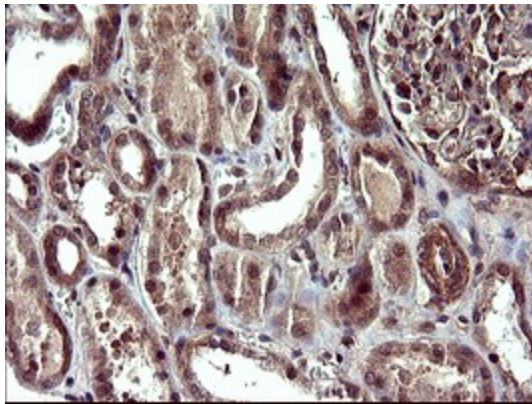


[View online »](#)

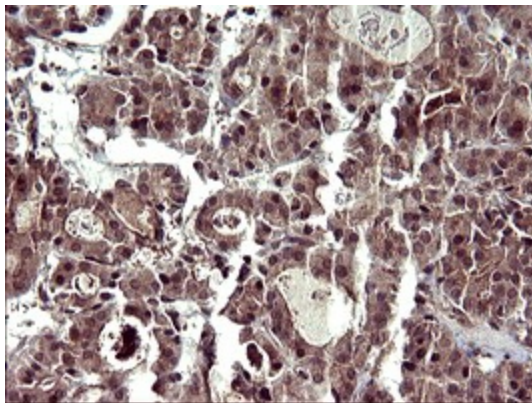
Product images:



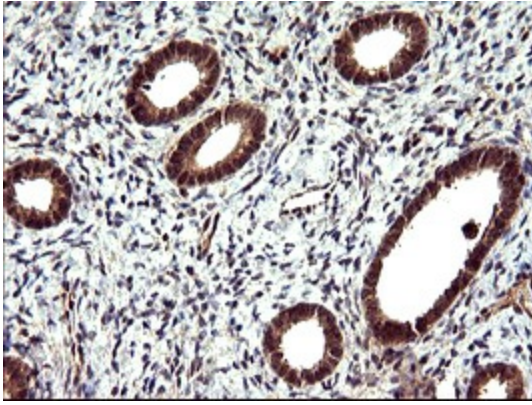
HEK293T cells were transfected with the pCMV6-ENTRY control (Left lane) or pCMV6-ENTRY CDC123 ([RC203311], Right lane) cDNA for 48 hrs and lysed. Equivalent amounts of cell lysates (5 ug per lane) were separated by SDS-PAGE and immunoblotted with anti-CDC123. Positive lysates [LY416883] (100ug) and [LC416883] (20ug) can be purchased separately from OriGene.



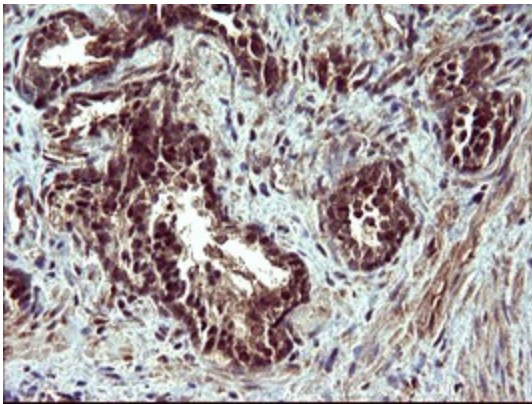
Immunohistochemical staining of paraffin-embedded Human Kidney tissue within the normal limits using anti-CDC123 mouse monoclonal antibody. (Heat-induced epitope retrieval by 10mM citric buffer, pH6.0, 120°C for 3min, [TA505692])



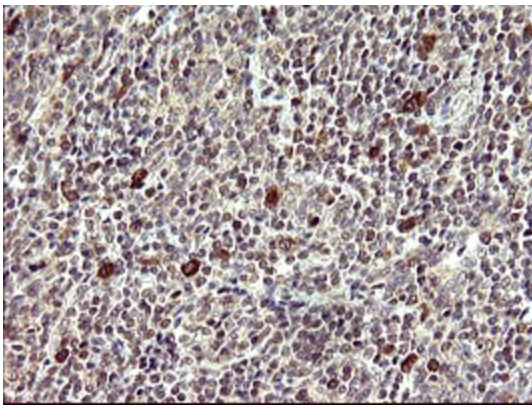
Immunohistochemical staining of paraffin-embedded Carcinoma of Human thyroid tissue using anti-CDC123 mouse monoclonal antibody. (Heat-induced epitope retrieval by 10mM citric buffer, pH6.0, 120°C for 3min, [TA505692])



Immunohistochemical staining of paraffin-embedded Human endometrium tissue within the normal limits using anti-CDC123 mouse monoclonal antibody. (Heat-induced epitope retrieval by 10mM citric buffer, pH6.0, 120°C for 3min, [TA505692])



Immunohistochemical staining of paraffin-embedded Carcinoma of Human prostate tissue using anti-CDC123 mouse monoclonal antibody. (Heat-induced epitope retrieval by 10mM citric buffer, pH6.0, 120°C for 3min, [TA505692])



Immunohistochemical staining of paraffin-embedded Human Lymphoma tissue using anti-CDC123 mouse monoclonal antibody. (Heat-induced epitope retrieval by 10mM citric buffer, pH6.0, 120°C for 3min, [TA505692])