

Product datasheet for **TA505691S**

VPS28 Mouse Monoclonal Antibody [Clone ID: OTI1A8]

Product data:

Product Type:	Primary Antibodies
Clone Name:	OTI1A8
Applications:	IF, IHC, WB
Recommended Dilution:	WB 1:200~2000, IHC 1:150, IF 1:100
Reactivity:	Human, Dog, Rat, Monkey, Mouse
Host:	Mouse
Isotype:	IgG1
Clonality:	Monoclonal
Immunogen:	Full length human recombinant protein of human VPS28(NP_057292) produced in HEK293T cell.
Formulation:	PBS (pH 7.3) containing 1% BSA, 50% glycerol and 0.02% sodium azide.
Concentration:	1 mg/ml
Purification:	Purified from mouse ascites fluids or tissue culture supernatant by affinity chromatography (protein A/G)
Conjugation:	Unconjugated
Storage:	Store at -20°C as received.
Stability:	Stable for 12 months from date of receipt.
Predicted Protein Size:	25.2 kDa
Gene Name:	VPS28 subunit of ESCRT-I
Database Link:	NP_057292 Entrez Gene 66914 Mouse Entrez Gene 300052 Rat Entrez Gene 607677 Dog Entrez Gene 702412 Monkey Entrez Gene 51160 Human Q9UK41



[View online »](#)

Background:

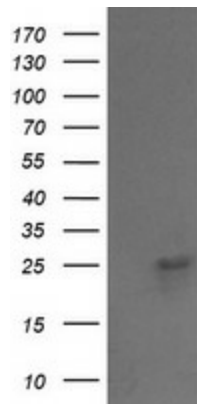
This gene encodes a protein involved in endosomal sorting of cell surface receptors via a multivesicular body/late endosome pathway. The encoded protein is one of the three subunits of the ESCRT-I complex (endosomal complexes required for transport) involved in the sorting of ubiquitinated proteins. The two other subunits of ESCRT-I are vesicular protein sorting 23, also known as tumor susceptibility gene 101 (TSG101), and vesicular protein sorting 37. Two alternative transcripts encoding different isoforms have been described. Additional alternative transcripts may exist but the proteins encoded by these transcripts have not been verified experimentally. [provided by RefSeq, Jul 2008]

Synonyms:

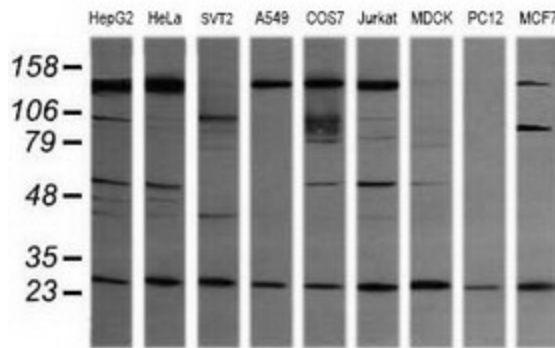
MGC60323

Protein Pathways:

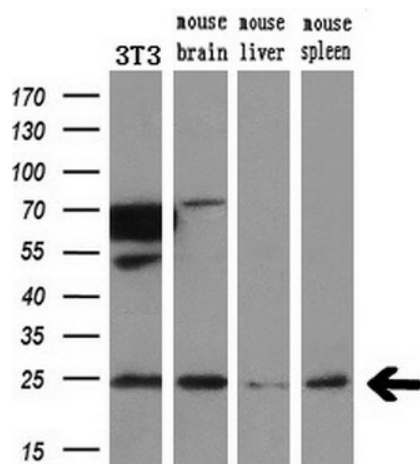
Endocytosis

Product images:


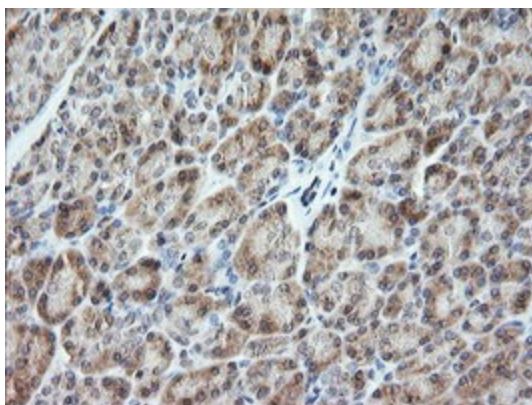
HEK293T cells were transfected with the pCMV6-ENTRY control (Cat# [PS100001], Left lane) or pCMV6-ENTRY VPS28 (Cat# [RC200025], Right lane) cDNA for 48 hrs and lysed. Equivalent amounts of cell lysates (5 ug per lane) were separated by SDS-PAGE and immunoblotted with anti-VPS28 (Cat# [TA505691]). Positive lysates [LY414122] (100ug) and [LC414122] (20ug) can be purchased separately from OriGene.



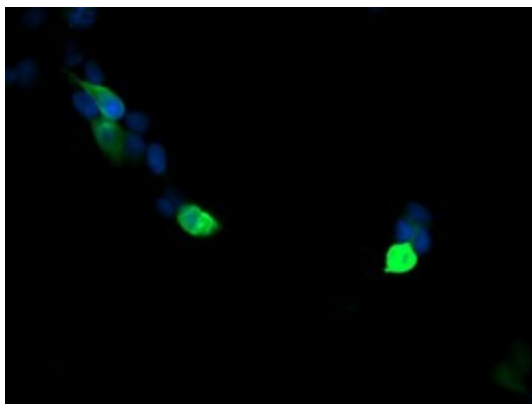
Western blot analysis of extracts (35ug) from 9 different cell lines by using anti-VPS28 monoclonal antibody (HepG2: human; HeLa: human; SVT2: mouse; A549: human; COS7: monkey; Jurkat: human; MDCK: canine; PC12: rat; MCF7: human).



Western blot analysis of extracts (10ug) from a mouse cell line and 3 different mouse tissues by using anti-VPS28 monoclonal antibody (1:200).



Immunohistochemical staining of paraffin-embedded Human pancreas tissue within the normal limits using anti-VPS28 mouse monoclonal antibody. (Heat-induced epitope retrieval by 10mM citric buffer, pH6.0, 120°C for 3min, [TA505691])



Anti-VPS28 mouse monoclonal antibody ([TA505691]) immunofluorescent staining of COS7 cells transiently transfected by pCMV6-ENTRY VPS28 ([RC200025]).