

## Product datasheet for **TA505690S**

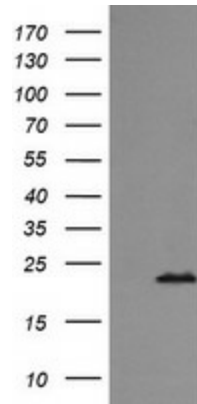
### **RAB24 Mouse Monoclonal Antibody [Clone ID: OTI3H1]**

#### **Product data:**

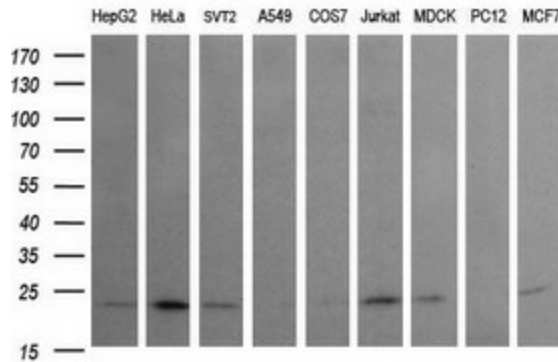
<b>Product Type:</b>	Primary Antibodies
<b>Clone Name:</b>	OTI3H1
<b>Applications:</b>	IF, WB
<b>Recommended Dilution:</b>	WB 1:200~4000, IF: 1:100
<b>Reactivity:</b>	Human, Dog, Mouse
<b>Host:</b>	Mouse
<b>Isotype:</b>	IgG1
<b>Clonality:</b>	Monoclonal
<b>Immunogen:</b>	Full length human recombinant protein of human RAB24(NP_001026847) produced in HEK293T cell.
<b>Formulation:</b>	PBS (pH 7.3) containing 1% BSA, 50% glycerol and 0.02% sodium azide.
<b>Concentration:</b>	1 mg/ml
<b>Purification:</b>	Purified from mouse ascites fluids or tissue culture supernatant by affinity chromatography (protein A/G)
<b>Conjugation:</b>	Unconjugated
<b>Storage:</b>	Store at -20°C as received.
<b>Stability:</b>	Stable for 12 months from date of receipt.
<b>Predicted Protein Size:</b>	22.9 kDa
<b>Gene Name:</b>	RAB24, member RAS oncogene family
<b>Database Link:</b>	<a href="#">NP_001026847</a> <a href="#">Entrez Gene 19336 Mouse</a> <a href="#">Entrez Gene 479277 Dog</a> <a href="#">Entrez Gene 53917 Human</a> <a href="#">Q969Q5</a>
<b>Synonyms:</b>	member RAS oncogene family; RAB24; RAB24 gene product
<b>Protein Families:</b>	Druggable Genome



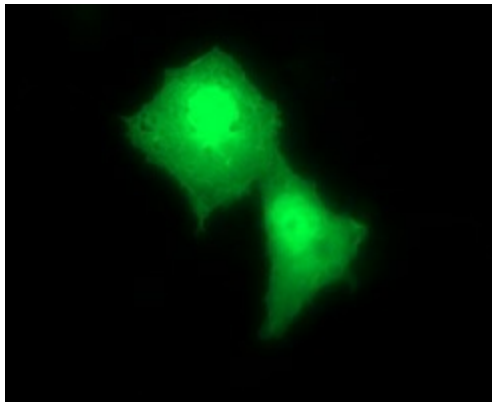
[View online »](#)

**Product images:**


HEK293T cells were transfected with the pCMV6-ENTRY control (Cat# [PS100001], Left lane) or pCMV6-ENTRY RAB24 (Cat# [RC205647], Right lane) cDNA for 48 hrs and lysed. Equivalent amounts of cell lysates (5 ug per lane) were separated by SDS-PAGE and immunoblotted with anti-RAB24(Cat# [TA505690]). Positive lysates [LY422221] (100ug) and [LC422221] (20ug) can be purchased separately from OriGene.



Western blot analysis of extracts (35ug) from 9 different cell lines by using anti-RAB24 monoclonal antibody (HepG2: human; HeLa: human; SVT2: mouse; A549: human; COS7: monkey; Jurkat: human; MDCK: canine; PC12: rat; MCF7: human).



Anti-RAB24 mouse monoclonal antibody ([TA505690]) immunofluorescent staining of COS7 cells transiently transfected by pCMV6-ENTRY RAB24 ([RC205647]).