

## Product datasheet for **TA505686AM**

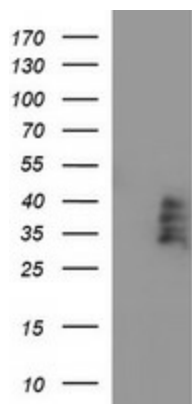
### CD272 (BTLA) Mouse Monoclonal Antibody (Biotin conjugated) [Clone ID: OTI2F5]

#### Product data:

Product Type:	Primary Antibodies
Clone Name:	OTI2F5
Applications:	WB
Recommended Dilution:	WB 1:2000
Reactivity:	Human
Host:	Mouse
Isotype:	IgG2b
Clonality:	Monoclonal
Immunogen:	Full length human recombinant protein of human BTLA(NP_861445) produced in HEK293T cell.
Formulation:	PBS (pH 7.3) containing 1% BSA, 50% glycerol and 0.02% sodium azide.
Concentration:	0.5 mg/ml
Purification:	Purified from mouse ascites fluids or tissue culture supernatant by affinity chromatography (protein A/G)
Conjugation:	Biotin
Storage:	Store at -20°C as received.
Stability:	Stable for 12 months from date of receipt.
Predicted Protein Size:	32.6 kDa
Gene Name:	B and T lymphocyte associated
Database Link:	<a href="#">NP_861445</a> <a href="#">Entrez Gene 151888 Human</a> <a href="#">Q7Z6A9</a>
Synonyms:	BTLA1; CD272
Protein Families:	Transmembrane



[View online »](#)

**Product images:**

HEK293T cells were transfected with the pCMV6-ENTRY control (Left lane) or pCMV6-ENTRY BTLA ([RC219458], Right lane) cDNA for 48 hrs and lysed. Equivalent amounts of cell lysates (5 ug per lane) were separated by SDS-PAGE and immunoblotted with anti-BTLA. Positive lysates [LY403628] (100ug) and [LC403628] (20ug) can be purchased separately from OriGene.