

Product datasheet for **TA505685M**

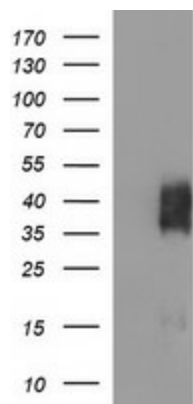
CD272 (BTLA) Mouse Monoclonal Antibody [Clone ID: OTI3E10]

Product data:

Product Type:	Primary Antibodies
Clone Name:	OTI3E10
Applications:	WB
Recommended Dilution:	WB 1:6000
Reactivity:	Human
Host:	Mouse
Isotype:	IgG2b
Clonality:	Monoclonal
Immunogen:	Full length human recombinant protein of human BTLA(NP_861445) produced in HEK293T cell.
Formulation:	PBS (pH 7.3) containing 1% BSA, 50% glycerol and 0.02% sodium azide.
Concentration:	1 mg/ml
Purification:	Purified from mouse ascites fluids or tissue culture supernatant by affinity chromatography (protein A/G)
Conjugation:	Unconjugated
Storage:	Store at -20°C as received.
Stability:	Stable for 12 months from date of receipt.
Predicted Protein Size:	32.6 kDa
Gene Name:	B and T lymphocyte associated
Database Link:	NP_861445 Entrez Gene 151888 Human Q7Z6A9
Synonyms:	BTLA1; CD272
Protein Families:	Transmembrane



[View online »](#)

Product images:


HEK293T cells were transfected with the pCMV6-ENTRY control (Left lane) or pCMV6-ENTRY BTLA ([RC219458], Right lane) cDNA for 48 hrs and lysed. Equivalent amounts of cell lysates (5 ug per lane) were separated by SDS-PAGE and immunoblotted with anti-BTLA. Positive lysates [LY403628] (100ug) and [LC403628] (20ug) can be purchased separately from OriGene.