

## Product datasheet for **TA505684M**

### **ADAMTS8 Mouse Monoclonal Antibody [Clone ID: OTI2H5]**

#### **Product data:**

|                         |   |
|-------------------------|---|
| Product Type:           | Primary Antibodies  |
| Clone Name:             | OTI2H5  |
| Applications:           | IF, WB  |
| Recommended Dilution:   | WB 1:1000, IF 1:100   |
| Reactivity:             | Human   |
| Host:                   | Mouse   |
| Isotype:                | IgG1  |
| Clonality:              | Monoclonal  |
| Immunogen:              | Full length human recombinant protein of human ADAMTS8(NP_008968) produced in HEK293T cell.               |
| Formulation:            | PBS (pH 7.3) containing 1% BSA, 50% glycerol and 0.02% sodium azide.                                      |
| Concentration:          | 1 mg/ml   |
| Purification:           | Purified from mouse ascites fluids or tissue culture supernatant by affinity chromatography (protein A/G) |
| Conjugation:            | Unconjugated  |
| Storage:                | Store at -20°C as received.   |
| Stability:              | Stable for 12 months from date of receipt.  |
| Predicted Protein Size: | 96.3 kDa  |
| Gene Name:              | ADAM metalloproteinase with thrombospondin type 1 motif 8   |
| Database Link:          | <a href="#">NP_008968</a><br><a href="#">Entrez Gene 11095 Human</a><br><a href="#">Q9UP79</a>            |



[View online »](#)

**Background:**

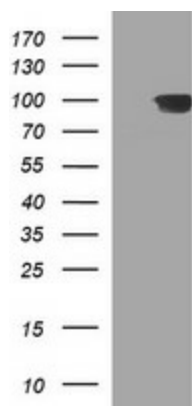
This gene encodes a member of the ADAMTS (a disintegrin and metalloproteinase with thrombospondin motifs) protein family. Members of the family share several distinct protein modules, including a propeptide region, a metalloproteinase domain, a disintegrin-like domain, and a thrombospondin type 1 (TS) motif. Individual members of this family differ in the number of C-terminal TS motifs, and some have unique C-terminal domains. The enzyme encoded by this gene contains two C-terminal TS motifs, and disrupts angiogenesis in vivo. A number of disorders have been mapped in the vicinity of this gene, most notably lung neoplasms. [provided by RefSeq, Jul 2008]

**Synonyms:**

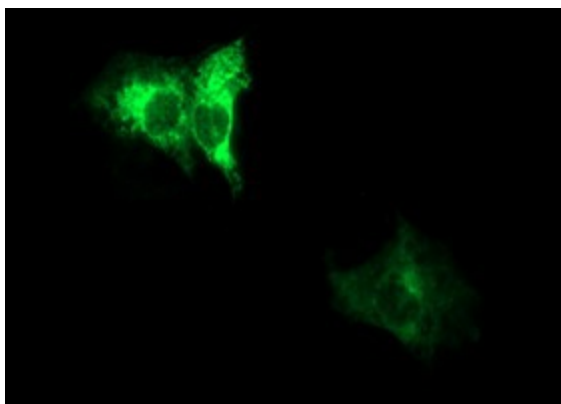
ADAM-TS8; METH2

**Protein Families:**

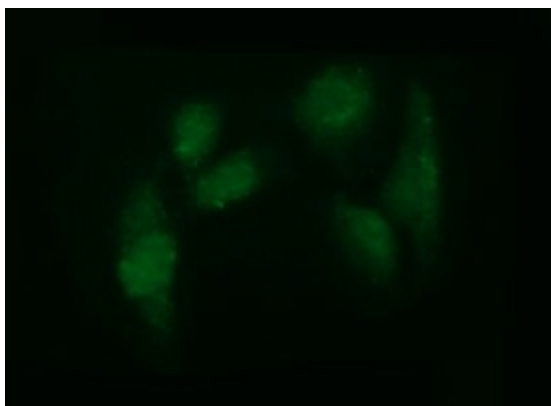
Druggable Genome, Protease, Secreted Protein

**Product images:**


HEK293T cells were transfected with the pCMV6-ENTRY control (Cat# [PS100001], Left lane) or pCMV6-ENTRY ADAMTS8 (Cat# [RC212446], Right lane) cDNA for 48 hrs and lysed. Equivalent amounts of cell lysates (5 ug per lane) were separated by SDS-PAGE and immunoblotted with anti-ADAMTS8 (Cat# [TA505684]). Positive lysates [LY402079] (100ug) and [LC402079] (20ug) can be purchased separately from OriGene.



Anti-ADAMTS8 mouse monoclonal antibody ([TA505684]) immunofluorescent staining of COS7 cells transiently transfected by pCMV6-ENTRY ADAMTS8 ([RC212446]).



Immunofluorescent staining of HeLa cells using anti-ADAMTS8 mouse monoclonal antibody ([TA505684]).