

## Product datasheet for **TA505683S**

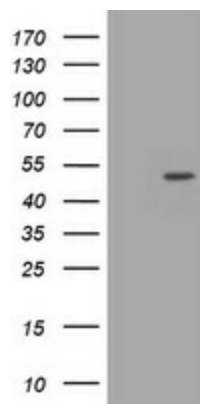
### **C10orf7 (CDC123) Mouse Monoclonal Antibody [Clone ID: OTI5F6]**

#### **Product data:**

Product Type:	Primary Antibodies
Clone Name:	OTI5F6
Applications:	WB
Recommended Dilution:	WB 1:2000
Reactivity:	Human, Mouse, Rat
Host:	Mouse
Isotype:	IgG1
Clonality:	Monoclonal
Immunogen:	Full length human recombinant protein of human CDC123 (NP_006014) produced in HEK293T cell.
Formulation:	PBS (pH 7.3) containing 1% BSA, 50% glycerol and 0.02% sodium azide.
Concentration:	1 mg/ml
Purification:	Purified from mouse ascites fluids or tissue culture supernatant by affinity chromatography (protein A/G)
Conjugation:	Unconjugated
Storage:	Store at -20°C as received.
Stability:	Stable for 12 months from date of receipt.
Predicted Protein Size:	39 kDa
Gene Name:	cell division cycle 123
Database Link:	<a href="#">NP_006014</a> <a href="#">Entrez Gene 98828 Mouse</a> <a href="#">Entrez Gene 116656 Rat</a> <a href="#">Entrez Gene 8872 Human</a> <a href="#">O75794</a>
Synonyms:	C10orf7; D123



[View online »](#)

**Product images:**

HEK293T cells were transfected with the pCMV6-ENTRY control (Left lane) or pCMV6-ENTRY CDC123 ([RC203311], Right lane) cDNA for 48 hrs and lysed. Equivalent amounts of cell lysates (5 ug per lane) were separated by SDS-PAGE and immunoblotted with anti-CDC123. Positive lysates [LY416883] (100ug) and [LC416883] (20ug) can be purchased separately from OriGene.