

## Product datasheet for **TA505682AM**

### **C10orf7 (CDC123) Mouse Monoclonal Antibody (Biotin conjugated) [Clone ID: OTI3B9]**

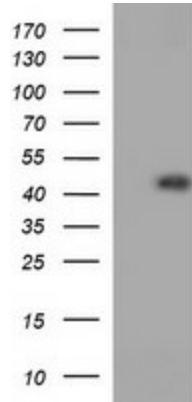
#### **Product data:**

<b>Product Type:</b>	Primary Antibodies
<b>Clone Name:</b>	OTI3B9
<b>Applications:</b>	WB
<b>Recommended Dilution:</b>	WB 1:4000
<b>Reactivity:</b>	Human, Mouse, Rat
<b>Host:</b>	Mouse
<b>Isotype:</b>	IgG1
<b>Clonality:</b>	Monoclonal
<b>Immunogen:</b>	Full length human recombinant protein of human CDC123(NP_006014) produced in HEK293T cell.
<b>Formulation:</b>	PBS (pH 7.3) containing 1% BSA, 50% glycerol and 0.02% sodium azide.
<b>Concentration:</b>	0.5 mg/ml
<b>Purification:</b>	Purified from mouse ascites fluids or tissue culture supernatant by affinity chromatography (protein A/G)
<b>Conjugation:</b>	Biotin
<b>Storage:</b>	Store at -20°C as received.
<b>Stability:</b>	Stable for 12 months from date of receipt.
<b>Predicted Protein Size:</b>	39 kDa
<b>Gene Name:</b>	cell division cycle 123
<b>Database Link:</b>	<a href="#">NP_006014</a> <a href="#">Entrez Gene 98828 Mouse</a> <a href="#">Entrez Gene 116656 Rat</a> <a href="#">Entrez Gene 8872 Human</a> <a href="#">O75794</a>
<b>Synonyms:</b>	C10orf7; D123



[View online »](#)

## Product images:



HEK293T cells were transfected with the pCMV6-ENTRY control (Left lane) or pCMV6-ENTRY CDC123 ([RC203311], Right lane) cDNA for 48 hrs and lysed. Equivalent amounts of cell lysates (5 ug per lane) were separated by SDS-PAGE and immunoblotted with anti-CDC123. Positive lysates [LY416883] (100ug) and [LC416883] (20ug) can be purchased separately from OriGene.