

Product datasheet for **TA505664S**

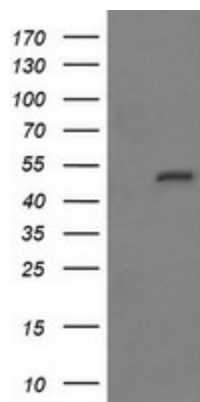
MYBPH Mouse Monoclonal Antibody [Clone ID: OTI3G1]

Product data:

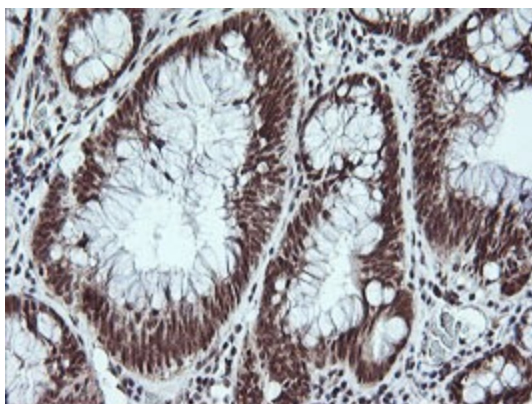
Product Type:	Primary Antibodies
Clone Name:	OTI3G1
Applications:	IF, IHC, WB
Recommended Dilution:	WB 1:4000, IHC 1:150, IF 1:100
Reactivity:	Human, Mouse
Host:	Mouse
Isotype:	IgG2a
Clonality:	Monoclonal
Immunogen:	Full length human recombinant protein of human MYBPH(NP_004988) produced in HEK293T cell.
Formulation:	PBS (pH 7.3) containing 1% BSA, 50% glycerol and 0.02% sodium azide.
Concentration:	1 mg/ml
Purification:	Purified from mouse ascites fluids or tissue culture supernatant by affinity chromatography (protein A/G)
Conjugation:	Unconjugated
Storage:	Store at -20°C as received.
Stability:	Stable for 12 months from date of receipt.
Predicted Protein Size:	51.9 kDa
Gene Name:	myosin binding protein H
Database Link:	NP_004988 Entrez Gene 53311 Mouse Entrez Gene 4608 Human Q13203
Synonyms:	myosin-binding protein H; myosin binding protein H; OTTHUMP00000039086



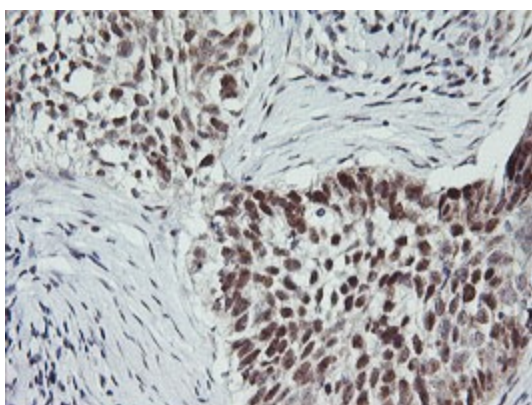
[View online »](#)

Product images:

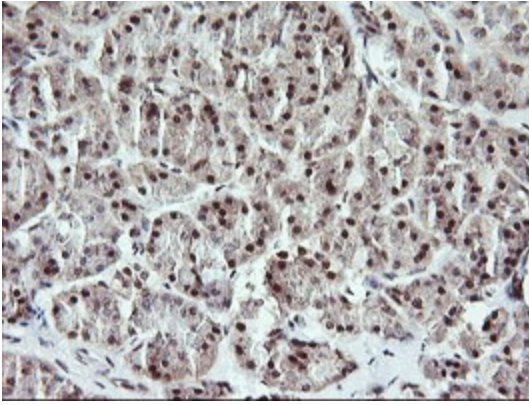
HEK293T cells were transfected with the pCMV6-ENTRY control (Cat# [PS100001], Left lane) or pCMV6-ENTRY MYBPH (Cat# [RC208162], Right lane) cDNA for 48 hrs and lysed. Equivalent amounts of cell lysates (5 ug per lane) were separated by SDS-PAGE and immunoblotted with anti-MYBPH(Cat# [TA505664]). Positive lysates [LY417599] (100ug) and [LC417599] (20ug) can be purchased separately from OriGene.



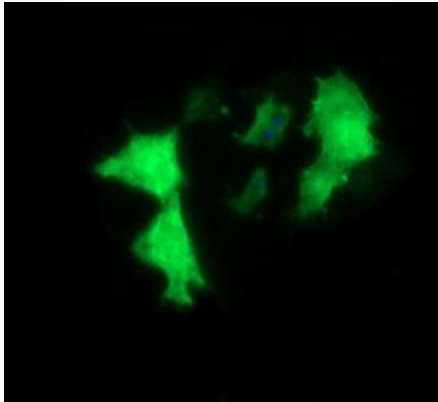
Immunohistochemical staining of paraffin-embedded Adenocarcinoma of Human colon tissue using anti-MYBPH mouse monoclonal antibody. (Heat-induced epitope retrieval by 10mM citric buffer, pH6.0, 120°C for 3min, [TA505664])



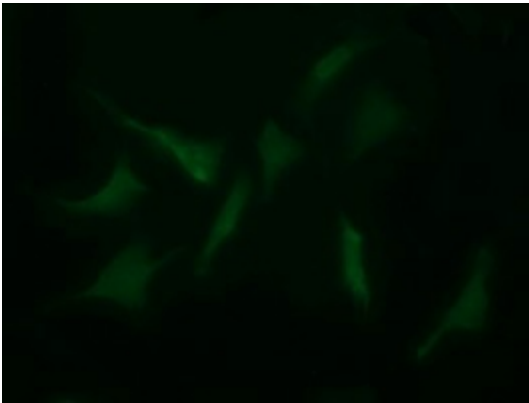
Immunohistochemical staining of paraffin-embedded Carcinoma of Human lung tissue using anti-MYBPH mouse monoclonal antibody. (Heat-induced epitope retrieval by 10mM citric buffer, pH6.0, 120°C for 3min, [TA505664])



Immunohistochemical staining of paraffin-embedded Human pancreas tissue within the normal limits using anti-MYBPH mouse monoclonal antibody. (Heat-induced epitope retrieval by 10mM citric buffer, pH6.0, 120°C for 3min, [TA505664])



Anti-MYBPH mouse monoclonal antibody ([TA505664]) immunofluorescent staining of COS7 cells transiently transfected by pCMV6-ENTRY MYBPH ([RC208162]).



Immunofluorescent staining of HeLa cells using anti-MYBPH mouse monoclonal antibody ([TA505664]).