

## Product datasheet for **TA505647S**

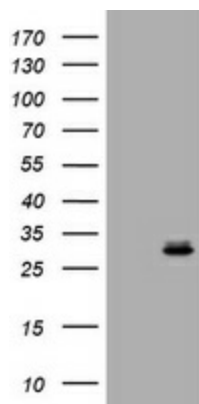
### **RAB24 Mouse Monoclonal Antibody [Clone ID: OTI4H10]**

#### **Product data:**

<b>Product Type:</b>	Primary Antibodies
<b>Clone Name:</b>	OTI4H10
<b>Applications:</b>	WB
<b>Recommended Dilution:</b>	WB 1:200
<b>Reactivity:</b>	Human, Mouse
<b>Host:</b>	Mouse
<b>Isotype:</b>	IgG1
<b>Clonality:</b>	Monoclonal
<b>Immunogen:</b>	Full length human recombinant protein of human RAB24 (NP_001026847) produced in HEK293T cell.
<b>Formulation:</b>	PBS (pH 7.3) containing 1% BSA, 50% glycerol and 0.02% sodium azide.
<b>Concentration:</b>	1 mg/ml
<b>Purification:</b>	Purified from mouse ascites fluids or tissue culture supernatant by affinity chromatography (protein A/G)
<b>Conjugation:</b>	Unconjugated
<b>Storage:</b>	Store at -20°C as received.
<b>Stability:</b>	Stable for 12 months from date of receipt.
<b>Predicted Protein Size:</b>	22.9 kDa
<b>Gene Name:</b>	RAB24, member RAS oncogene family
<b>Database Link:</b>	<a href="#">NP_001026847</a> <a href="#">Entrez Gene 19336 Mouse</a> <a href="#">Entrez Gene 53917 Human</a> <a href="#">Q969Q5</a>
<b>Background:</b>	RAB24 is a small GTPase of the Rab subfamily of Ras-related proteins that regulate intracellular protein trafficking (Oikkonen et al., 1993 [PubMed 8126105]). [supplied by OMIM, Aug 2009]
<b>Synonyms:</b>	member RAS oncogene family; RAB24; RAB24 gene product
<b>Protein Families:</b>	Druggable Genome



[View online »](#)

**Product images:**

HEK293T cells were transfected with the pCMV6-ENTRY control (Left lane) or pCMV6-ENTRY RAB24 ([RC205647], Right lane) cDNA for 48 hrs and lysed. Equivalent amounts of cell lysates (5 ug per lane) were separated by SDS-PAGE and immunoblotted with anti-RAB24. Positive lysates [LY422221] (100ug) and [LC422221] (20ug) can be purchased separately from OriGene.