

## Product datasheet for **TA505647AM**

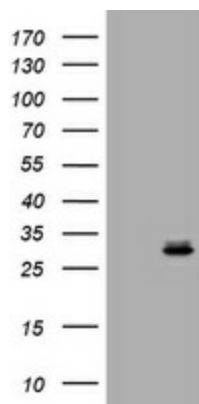
### **RAB24 Mouse Monoclonal Antibody (Biotin conjugated) [Clone ID: OTI4H10]**

#### **Product data:**

Product Type:	Primary Antibodies
Clone Name:	OTI4H10
Applications:	WB
Recommended Dilution:	WB 1:200
Reactivity:	Human, Mouse
Host:	Mouse
Isotype:	IgG1
Clonality:	Monoclonal
Immunogen:	Full length human recombinant protein of human RAB24 (NP_001026847) produced in HEK293T cell.
Formulation:	PBS (pH 7.3) containing 1% BSA, 50% glycerol and 0.02% sodium azide.
Concentration:	0.5 mg/ml
Purification:	Purified from mouse ascites fluids or tissue culture supernatant by affinity chromatography (protein A/G)
Conjugation:	Biotin
Storage:	Store at -20°C as received.
Stability:	Stable for 12 months from date of receipt.
Predicted Protein Size:	22.9 kDa
Gene Name:	RAB24, member RAS oncogene family
Database Link:	<a href="#">NP_001026847</a> <a href="#">Entrez Gene 19336 Mouse</a> <a href="#">Entrez Gene 53917 Human</a> <a href="#">Q969Q5</a>
Background:	RAB24 is a small GTPase of the Rab subfamily of Ras-related proteins that regulate intracellular protein trafficking (Oikkonen et al., 1993 [PubMed 8126105]). [supplied by OMIM, Aug 2009]
Synonyms:	member RAS oncogene family; RAB24; RAB24 gene product
Protein Families:	Druggable Genome



[View online »](#)

**Product images:**

HEK293T cells were transfected with the pCMV6-ENTRY control (Left lane) or pCMV6-ENTRY RAB24 ([RC205647], Right lane) cDNA for 48 hrs and lysed. Equivalent amounts of cell lysates (5 ug per lane) were separated by SDS-PAGE and immunoblotted with anti-RAB24. Positive lysates [LY422221] (100ug) and [LC422221] (20ug) can be purchased separately from OriGene.