

## Product datasheet for **TA505625BM**

### GLB1 Mouse Monoclonal Antibody (HRP conjugated) [Clone ID: OTI10B2]

#### Product data:

Product Type:	Primary Antibodies
Clone Name:	OTI10B2
Applications:	IF, WB
Recommended Dilution:	WB 1:200~2000, IF 1:100
Reactivity:	Human, Dog, Rat, Monkey, Mouse
Host:	Mouse
Isotype:	IgG1
Clonality:	Monoclonal
Immunogen:	Full length human recombinant protein of human GLB1(NP_001073279) produced in HEK293T cell.
Formulation:	PBS (pH 7.3) containing 1% BSA, 50% glycerol.
Concentration:	0.5 mg/ml
Purification:	Purified from mouse ascites fluids or tissue culture supernatant by affinity chromatography (protein A/G)
Conjugation:	HRP
Storage:	Store at -20°C as received.
Stability:	Stable for 12 months from date of receipt.
Predicted Protein Size:	72.6 kDa
Gene Name:	galactosidase beta 1
Database Link:	<a href="#">NP_001073279</a> <a href="#">Entrez Gene 12091 Mouse</a> <a href="#">Entrez Gene 316033 Rat</a> <a href="#">Entrez Gene 403873 Dog</a> <a href="#">Entrez Gene 709355 Monkey</a> <a href="#">Entrez Gene 2720 Human</a> <a href="#">P16278</a>
Background:	This gene encodes beta-galactosidase-1, a lysosomal enzyme that hydrolyzes the terminal beta-galactose from ganglioside substrates and other glycoconjugates. Defects in this gene are the cause of GM1-gangliosidosis and Morquio B syndrome. Multiple transcript variants encoding different isoforms have been found for this gene. [provided by RefSeq, Oct 2008]



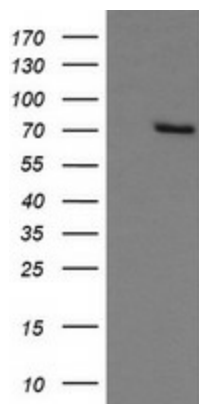
[View online »](#)

**Synonyms:** EBP; ELNR1; MPS4B

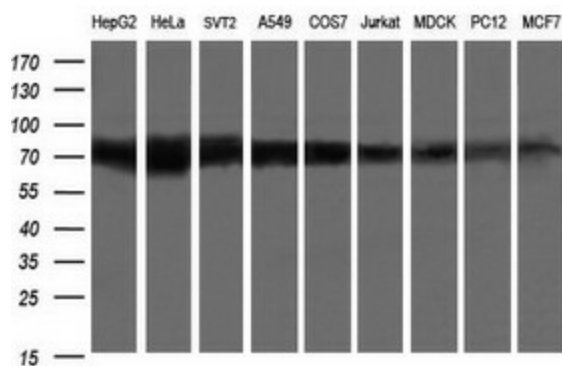
**Protein Families:** Druggable Genome

**Protein Pathways:** Galactose metabolism, Glycosaminoglycan degradation, Glycosphingolipid biosynthesis - ganglio series, Lysosome, Metabolic pathways, Other glycan degradation, Sphingolipid metabolism

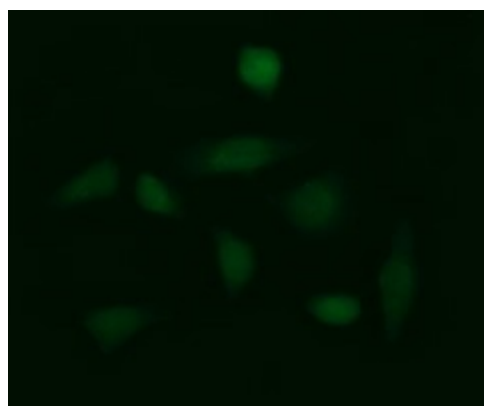
**Product images:**



HEK293T cells were transfected with the pCMV6-ENTRY control (Left lane) or pCMV6-ENTRY GLB1 ([RC200721], Right lane) cDNA for 48 hrs and lysed. Equivalent amounts of cell lysates (5 ug per lane) were separated by SDS-PAGE and immunoblotted with anti-GLB1.



Western blot analysis of extracts (35ug) from 9 different cell lines by using anti-GLB1 monoclonal antibody (HepG2: human; HeLa: human; SVT2: mouse; A549: human; COS7: monkey; Jurkat: human; MDCK: canine; PC12: rat; MCF7: human).



Immunofluorescent staining of HeLa cells using anti-GLB1 mouse monoclonal antibody ([TA505625]).