

Product datasheet for **TA505622**

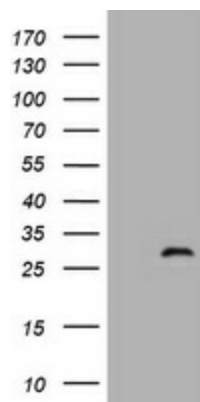
ZFYVE21 Mouse Monoclonal Antibody [Clone ID: OTI4A2]

Product data:

Product Type:	Primary Antibodies
Clone Name:	OTI4A2
Applications:	WB
Recommended Dilution:	WB 1:2000
Reactivity:	Human
Host:	Mouse
Isotype:	IgG1
Clonality:	Monoclonal
Immunogen:	Full length human recombinant protein of human ZFYVE21 (NP_076976) produced in HEK293T cell.
Formulation:	PBS (pH 7.3) containing 1% BSA, 50% glycerol and 0.02% sodium azide.
Concentration:	1 mg/ml
Purification:	Purified from mouse ascites fluids or tissue culture supernatant by affinity chromatography (protein A/G)
Conjugation:	Unconjugated
Storage:	Store at -20°C as received.
Stability:	Stable for 12 months from date of receipt.
Predicted Protein Size:	26.3 kDa
Gene Name:	zinc finger FYVE-type containing 21
Database Link:	NP_076976 Entrez Gene 79038 Human Q9BQ24
Synonyms:	HCVP7TP1; ZF21



[View online »](#)

Product images:

HEK293T cells were transfected with the pCMV6-ENTRY control (Cat# [PS100001], Left lane) or pCMV6-ENTRY ZFYVE21 (Cat# [RC203337], Right lane) cDNA for 48 hrs and lysed. Equivalent amounts of cell lysates (5 ug per lane) were separated by SDS-PAGE and immunoblotted with anti-ZFYVE21 (Cat# TA505622). Positive lysates [LY411387] (100ug) and [LC411387] (20ug) can be purchased separately from OriGene.