

## Product datasheet for **TA505612AM**

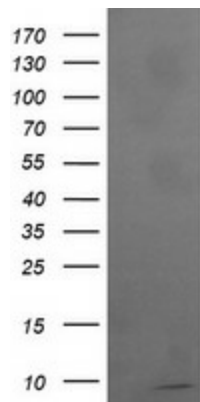
### **ROMO1 Mouse Monoclonal Antibody (Biotin conjugated) [Clone ID: OTI1G4]**

#### **Product data:**

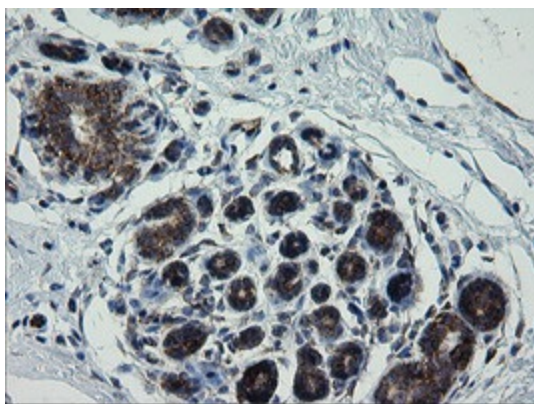
Product Type:	Primary Antibodies
Clone Name:	OTI1G4
Applications:	IF, IHC, WB
Recommended Dilution:	WB 1:2000, IHC 1:150, IF 1:100
Reactivity:	Human, Mouse, Rat
Host:	Mouse
Isotype:	IgG2b
Clonality:	Monoclonal
Immunogen:	Full length human recombinant protein of human ROMO1(NP_542786) produced in HEK293T cell.
Formulation:	PBS (pH 7.3) containing 1% BSA, 50% glycerol and 0.02% sodium azide.
Concentration:	0.5 mg/ml
Purification:	Purified from mouse ascites fluids or tissue culture supernatant by affinity chromatography (protein A/G)
Conjugation:	Biotin
Storage:	Store at -20°C as received.
Stability:	Stable for 12 months from date of receipt.
Gene Name:	reactive oxygen species modulator 1
Database Link:	<a href="#">NP_542786</a> <a href="#">Entrez Gene 140823 Human</a> <a href="#">P60602</a>
Synonyms:	bA353C18.2; C20orf52; MTGM; MTGMP
Protein Families:	Transmembrane



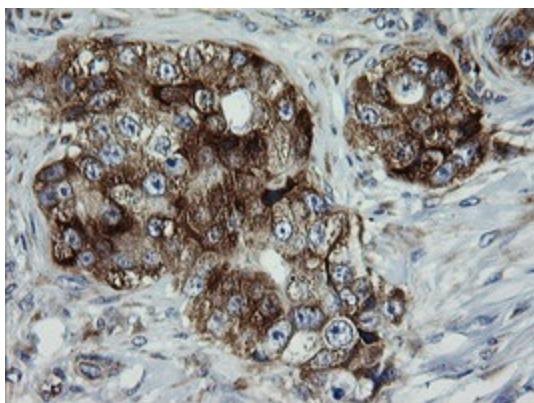
[View online »](#)

**Product images:**

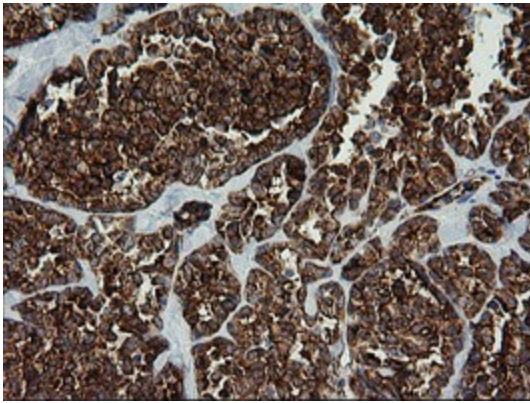
HEK293T cells were transfected with the pCMV6-ENTRY control (Left lane) or pCMV6-ENTRY ROMO1 ([RC210655], Right lane) cDNA for 48 hrs and lysed. Equivalent amounts of cell lysates (5 ug per lane) were separated by SDS-PAGE and immunoblotted with anti-ROMO1. Positive lysates [LY409065] (100ug) and [LC409065] (20ug) can be purchased separately from OriGene.



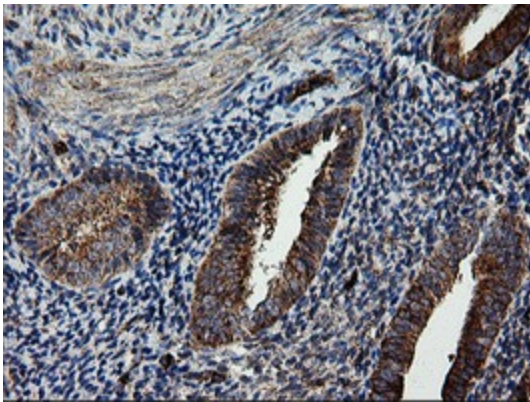
Immunohistochemical staining of paraffin-embedded Human breast tissue within the normal limits using anti-ROMO1 mouse monoclonal antibody. (Heat-induced epitope retrieval by 10mM citric buffer, pH6.0, 120°C for 3min, [TA505612])



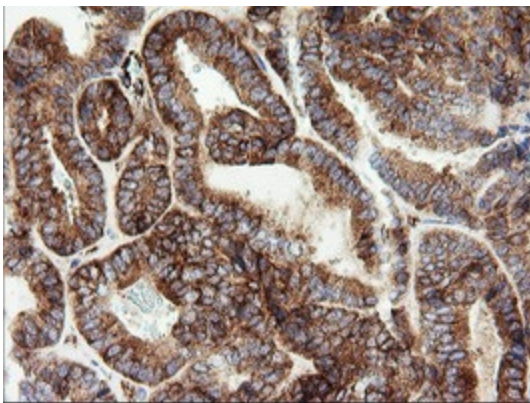
Immunohistochemical staining of paraffin-embedded Adenocarcinoma of Human breast tissue using anti-ROMO1 mouse monoclonal antibody. (Heat-induced epitope retrieval by 10mM citric buffer, pH6.0, 120°C for 3min, [TA505612])



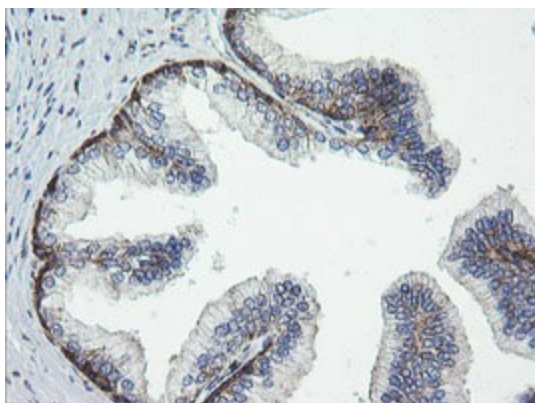
Immunohistochemical staining of paraffin-embedded Carcinoma of Human thyroid tissue using anti-ROMO1 mouse monoclonal antibody. (Heat-induced epitope retrieval by 10mM citric buffer, pH6.0, 120°C for 3min, [TA505612])



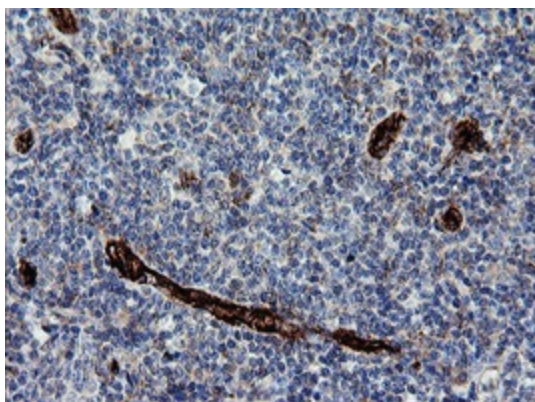
Immunohistochemical staining of paraffin-embedded Human endometrium tissue within the normal limits using anti-ROMO1 mouse monoclonal antibody. (Heat-induced epitope retrieval by 10mM citric buffer, pH6.0, 120°C for 3min, [TA505612])



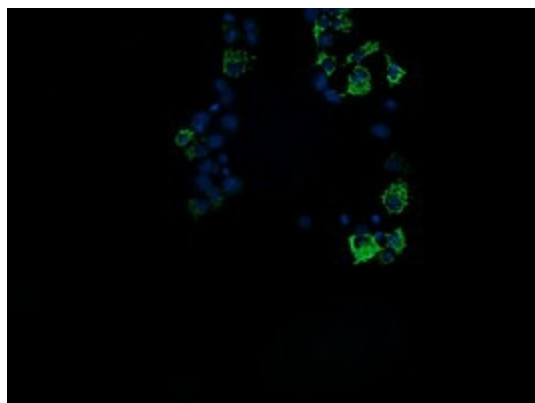
Immunohistochemical staining of paraffin-embedded Adenocarcinoma of Human endometrium tissue using anti-ROMO1 mouse monoclonal antibody. (Heat-induced epitope retrieval by 10mM citric buffer, pH6.0, 120°C for 3min, [TA505612])



Immunohistochemical staining of paraffin-embedded Human prostate tissue within the normal limits using anti-ROMO1 mouse monoclonal antibody. (Heat-induced epitope retrieval by 10mM citric buffer, pH6.0, 120°C for 3min, [TA505612])



Immunohistochemical staining of paraffin-embedded Human tonsil within the normal limits using anti-ROMO1 mouse monoclonal antibody. (Heat-induced epitope retrieval by 10mM citric buffer, pH6.0, 120°C for 3min, [TA505612])



Anti-ROMO1 mouse monoclonal antibody ([TA505612]) immunofluorescent staining of COS7 cells transiently transfected by pCMV6-ENTRY ROMO1 ([RC210655]).