

Product datasheet for **TA505611S**

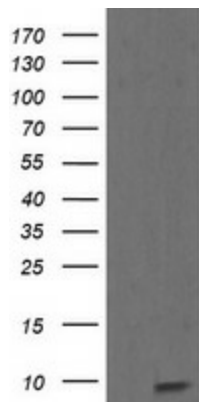
ROMO1 Mouse Monoclonal Antibody [Clone ID: OTI5G8]

Product data:

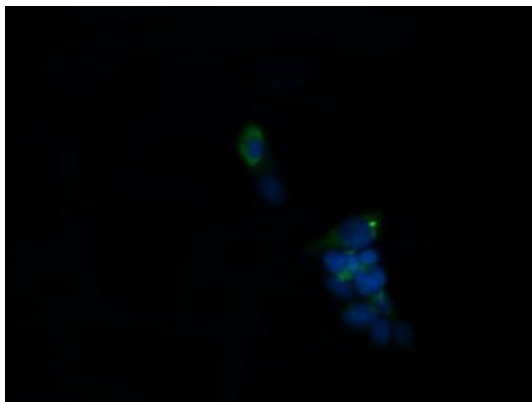
Product Type:	Primary Antibodies
Clone Name:	OTI5G8
Applications:	IF, WB
Recommended Dilution:	WB 1:2000, IF 1:100
Reactivity:	Human, Mouse, Rat
Host:	Mouse
Isotype:	IgG2b
Clonality:	Monoclonal
Immunogen:	Full length human recombinant protein of human ROMO1(NP_542786) produced in HEK293T cell.
Formulation:	PBS (pH 7.3) containing 1% BSA, 50% glycerol and 0.02% sodium azide.
Concentration:	1 mg/ml
Purification:	Purified from mouse ascites fluids or tissue culture supernatant by affinity chromatography (protein A/G)
Conjugation:	Unconjugated
Storage:	Store at -20°C as received.
Stability:	Stable for 12 months from date of receipt.
Predicted Protein Size:	8 kDa
Gene Name:	reactive oxygen species modulator 1
Database Link:	NP_542786 Entrez Gene 140823 Human P60602
Synonyms:	bA353C18.2; C20orf52; MTGM; MTGMP
Protein Families:	Transmembrane



[View online »](#)

Product images:

HEK293T cells were transfected with the pCMV6-ENTRY control (Left lane) or pCMV6-ENTRY ROMO1 ([RC210655], Right lane) cDNA for 48 hrs and lysed. Equivalent amounts of cell lysates (5 ug per lane) were separated by SDS-PAGE and immunoblotted with anti-ROMO1. Positive lysates [LY409065] (100ug) and [LC409065] (20ug) can be purchased separately from OriGene.



Anti-ROMO1 mouse monoclonal antibody ([TA505611]) immunofluorescent staining of COS7 cells transiently transfected by pCMV6-ENTRY ROMO1 ([RC210655]).