

## Product datasheet for **TA505597M**

### GLB1 Mouse Monoclonal Antibody [Clone ID: OTI5H2]

#### Product data:

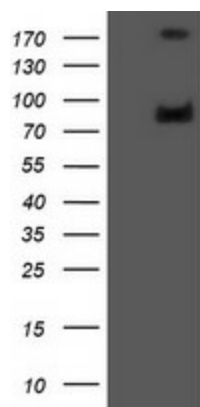
Product Type:	Primary Antibodies
Clone Name:	OTI5H2
Applications:	FC, IF, WB
Recommended Dilution:	WB 1:1000, IF 1:100, FLOW 1:100
Reactivity:	Human
Host:	Mouse
Isotype:	IgG1
Clonality:	Monoclonal
Immunogen:	Full length human recombinant protein of human GLB1(NP_001073279) produced in HEK293T cell.
Formulation:	PBS (pH 7.3) containing 1% BSA, 50% glycerol and 0.02% sodium azide.
Concentration:	1 mg/ml
Purification:	Purified from mouse ascites fluids or tissue culture supernatant by affinity chromatography (protein A/G)
Conjugation:	Unconjugated
Storage:	Store at -20°C as received.
Stability:	Stable for 12 months from date of receipt.
Predicted Protein Size:	72.6 kDa
Gene Name:	galactosidase beta 1
Database Link:	<a href="#">NP_001073279</a> <a href="#">Entrez Gene 2720 Human</a> <a href="#">P16278</a>
Background:	This gene encodes beta-galactosidase-1, a lysosomal enzyme that hydrolyzes the terminal beta-galactose from ganglioside substrates and other glycoconjugates. Defects in this gene are the cause of GM1-gangliosidosis and Morquio B syndrome. Multiple transcript variants encoding different isoforms have been found for this gene. [provided by RefSeq]
Synonyms:	EBP; ELNR1; MPS4B


[View online »](#)

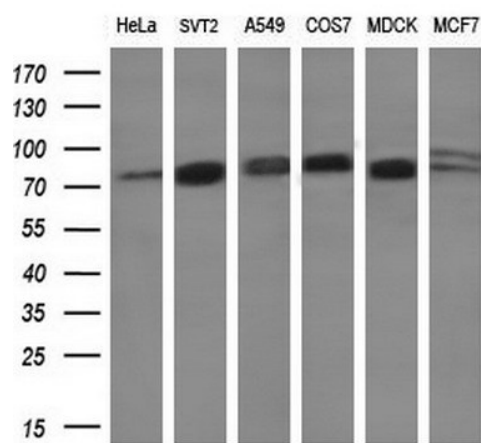
**Protein Families:** Druggable Genome

**Protein Pathways:** Galactose metabolism, Glycosaminoglycan degradation, Glycosphingolipid biosynthesis - ganglio series, Lysosome, Metabolic pathways, Other glycan degradation, Sphingolipid metabolism

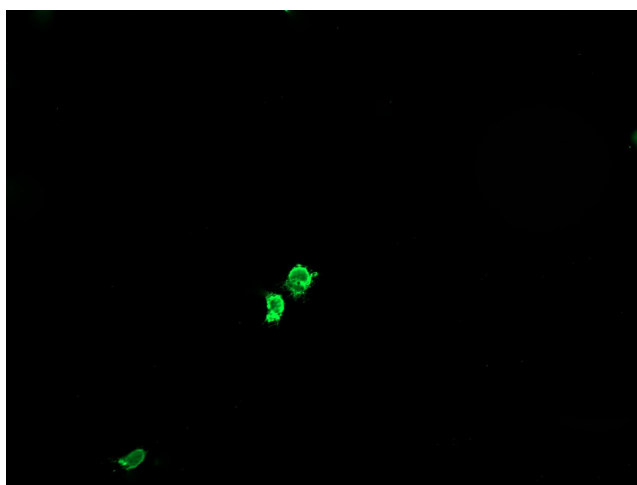
### Product images:



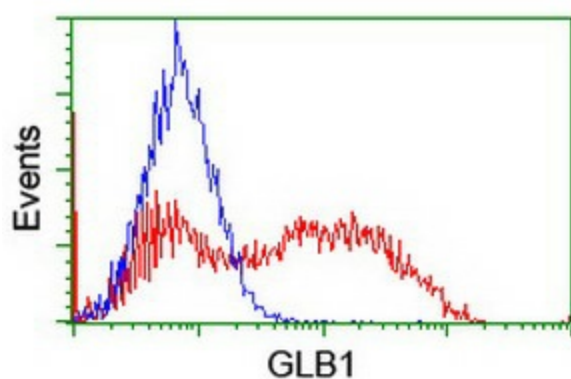
HEK293T cells were transfected with the pCMV6-ENTRY control (Left lane) or pCMV6-ENTRY GLB1 ([RC200721], Right lane) cDNA for 48 hrs and lysed. Equivalent amounts of cell lysates (5 ug per lane) were separated by SDS-PAGE and immunoblotted with anti-GLB1.



Western blot analysis of extracts (10ug) from 6 different cell lines by using anti-GLB1 monoclonal antibody (1:200).



Anti-GLB1 mouse monoclonal antibody ([TA505597]) immunofluorescent staining of COS7 cells transiently transfected by pCMV6-ENTRY GLB1 ([RC200721]).



HEK293T cells transfected with either [RC200721] overexpress plasmid (Red) or empty vector control plasmid (Blue) were immunostained by anti-GLB1 antibody ([TA505597]), and then analyzed by flow cytometry.