

Product datasheet for **TA505587M**

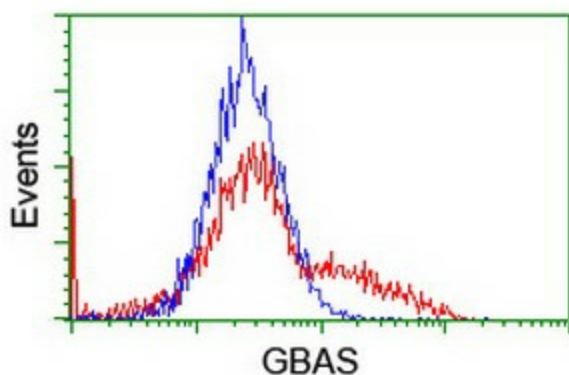
NIPSNAP2 Mouse Monoclonal Antibody [Clone ID: OTI1B2]

Product data:

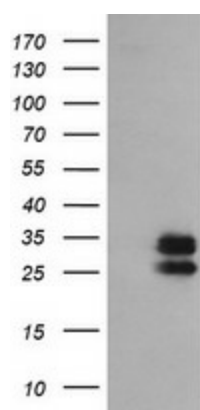
| | |
|-------------------------|---|
| Product Type: | Primary Antibodies |
| Clone Name: | OTI1B2 |
| Applications: | FC, IF, WB |
| Recommended Dilution: | WB: 1:200-1:1000, IF: 1:100, FLOW: 1:100 |
| Reactivity: | Human |
| Host: | Mouse |
| Isotype: | IgG1 |
| Clonality: | Monoclonal |
| Immunogen: | Full length human recombinant protein of human GBAS(NP_001474) produced in E.coli. |
| Formulation: | PBS (pH 7.3) containing 1% BSA, 50% glycerol and 0.02% sodium azide. |
| Concentration: | 1 mg/ml |
| Purification: | Purified from mouse ascites fluids or tissue culture supernatant by affinity chromatography (protein A/G) |
| Conjugation: | Unconjugated |
| Storage: | Store at -20°C as received. |
| Stability: | Stable for 12 months from date of receipt. |
| Predicted Protein Size: | 33.6 kDa |
| Gene Name: | nipsnap homolog 2 |
| Database Link: | NP_001474 Entrez Gene 2631 Human O75323 |
| Background: | This gene encodes a member of the NipSnap family of proteins that may be involved in vesicular transport. The encoded protein is localized to mitochondria and plays a role in oxidative phosphorylation. A pseudogene of this gene is located on the long arm of chromosome 2. Alternatively spliced transcript variants encoding multiple isoforms have been observed for this gene. [provided by RefSeq, Feb 2011] |
| Synonyms: | NIPSNAP2 |

[View online »](#)

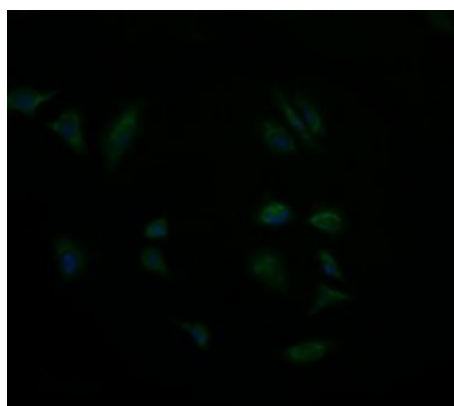
Product images:



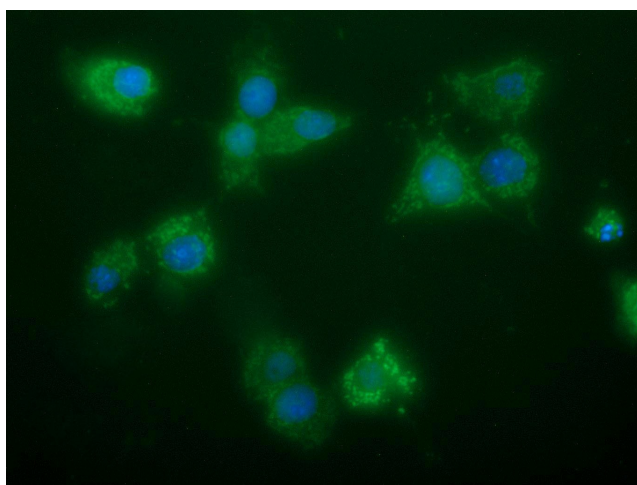
HEK293T cells transfected with either [RC205027] overexpress plasmid (Red) or empty vector control plasmid (Blue) were immunostained by anti-GBAS antibody ([TA505587]), and then analyzed by flow cytometry.



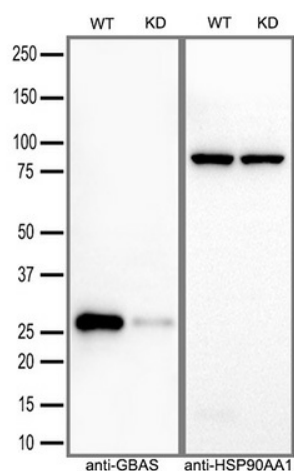
HEK293T cells were transfected with the pCMV6-ENTRY control (Left lane) or pCMV6-ENTRY GBAS ([RC205027], Right lane) cDNA for 48 hrs and lysed. Equivalent amounts of cell lysates (5 ug per lane) were separated by SDS-PAGE and immunoblotted with anti-GBAS. Positive lysates [LY400571] (100ug) and [LC400571] (20ug) can be purchased separately from OriGene.



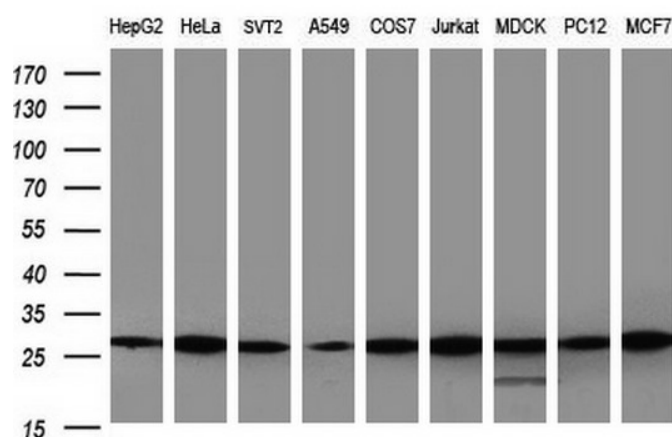
Immunofluorescent staining of HeLa cells using anti-GBAS mouse monoclonal antibody ([TA505587]).



Anti-GBAS mouse monoclonal antibody ([TA505587]) immunofluorescent staining of COS7 cells transiently transfected by pCMV6-ENTRY GBAS ([RC205027]).



Equivalent amounts of cell lysates (30 ug per lane) of wild-type HeLa cells (WT) and GBAS-Knockdown HeLa cells (KD) were separated by SDS-PAGE and immunoblotted with anti-GBAS monoclonal antibody [TA505587] (1:2000). Then the blotted membrane was stripped and reprobed with anti-HSP90AA1 antibody as a loading control.



Western blot analysis of extracts (35ug) from 9 different cell lines by using anti-GBAS monoclonal antibody (HepG2: human; HeLa: human; SVT2: mouse; A549: human; COS7: monkey; Jurkat: human; MDCK: canine; PC12: rat; MCF7: human) (1:200).