

## Product datasheet for **TA505585M**

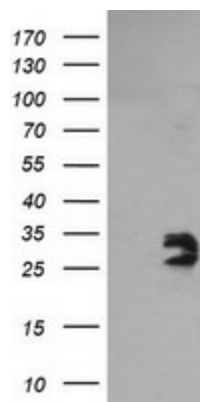
### **NIPSNAP2 Mouse Monoclonal Antibody [Clone ID: OTI1D6]**

#### **Product data:**

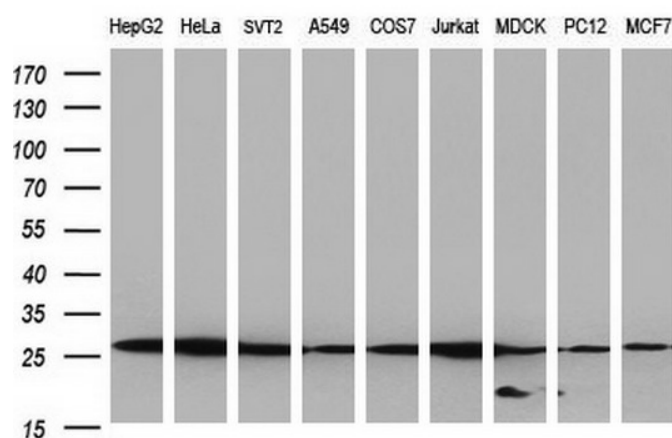
Product Type:	Primary Antibodies
Clone Name:	OTI1D6
Applications:	FC, IF, WB
Recommended Dilution:	WB: 1:200-1:1000, IF: 1:100, FLOW: 1:100
Reactivity:	Human
Host:	Mouse
Isotype:	IgG1
Clonality:	Monoclonal
Immunogen:	Full length human recombinant protein of human GBAS(NP_001474) proeduced in E.coli.
Formulation:	PBS (pH 7.3) containing 1% BSA, 50% glycerol and 0.02% sodium azide.
Concentration:	1 mg/ml
Purification:	Purified from mouse ascites fluids or tissue culture supernatant by affinity chromatography (protein A/G)
Conjugation:	Unconjugated
Storage:	Store at -20°C as received.
Stability:	Stable for 12 months from date of receipt.
Predicted Protein Size:	33.6 kDa
Gene Name:	nipsnap homolog 2
Database Link:	<a href="#">NP_001474</a> <a href="#">Entrez Gene 2631 Human</a> <a href="#">O75323</a>
Background:	This gene encodes a member of the NipSnap family of proteins that may be involved in vesicular transport. The encoded protein is localized to mitochondria and plays a role in oxidative phosphorylation. A pseudogene of this gene is located on the long arm of chromosome 2. Alternatively spliced transcript variants encoding multiple isoforms have been observed for this gene. [provided by RefSeq, Feb 2011]
Synonyms:	NIPSNAP2


[View online »](#)

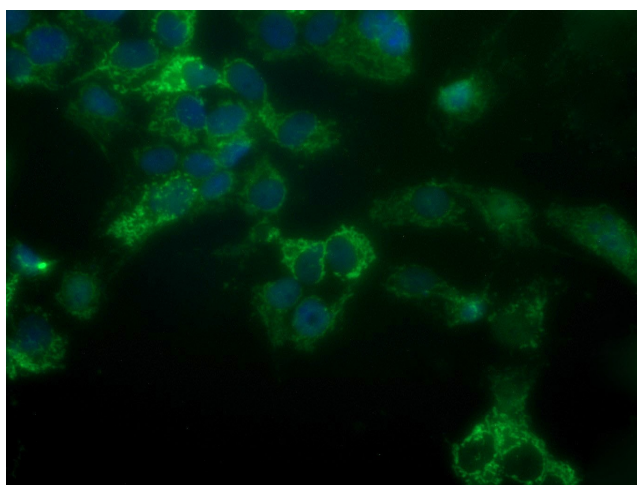
## Product images:



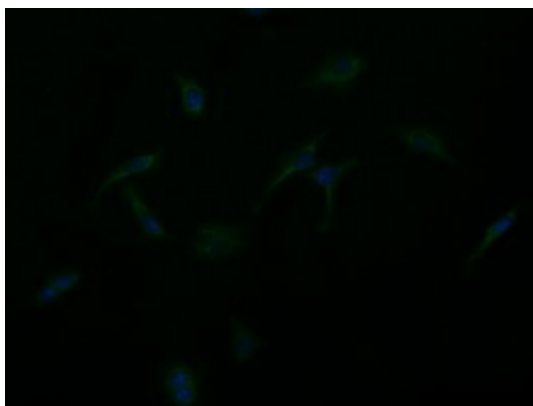
HEK293T cells were transfected with the pCMV6-ENTRY control (Left lane) or pCMV6-ENTRY GBAS ([RC205027], Right lane) cDNA for 48 hrs and lysed. Equivalent amounts of cell lysates (5 ug per lane) were separated by SDS-PAGE and immunoblotted with anti-GBAS. Positive lysates [LY400571] (100ug) and [LC400571] (20ug) can be purchased separately from OriGene.



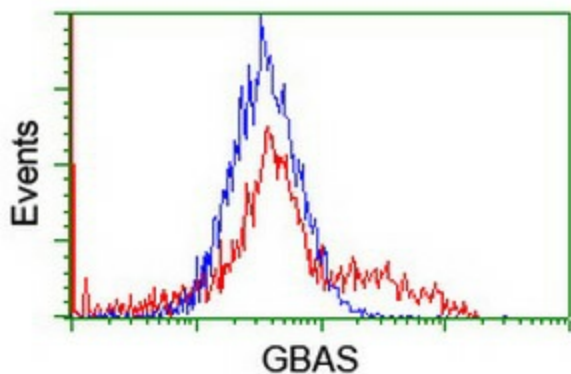
Western blot analysis of extracts (35ug) from 9 different cell lines by using anti-GBAS monoclonal antibody (HepG2: human; HeLa: human; SVT2: mouse; A549: human; COS7: monkey; Jurkat: human; MDCK: canine; PC12: rat; MCF7: human) (1:200).



Anti-GBAS mouse monoclonal antibody ([TA505585]) immunofluorescent staining of COS7 cells transiently transfected by pCMV6-ENTRY GBAS ([RC205027]).



Immunofluorescent staining of HeLa cells using anti-GBAS mouse monoclonal antibody (TA505585).



HEK293T cells transfected with either [RC205027] overexpress plasmid (Red) or empty vector control plasmid (Blue) were immunostained by anti-GBAS antibody (TA505585), and then analyzed by flow cytometry.