

## Product datasheet for **TA505580S**

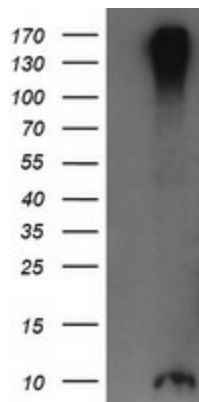
### **ROMO1 Mouse Monoclonal Antibody [Clone ID: OTI2C12]**

#### **Product data:**

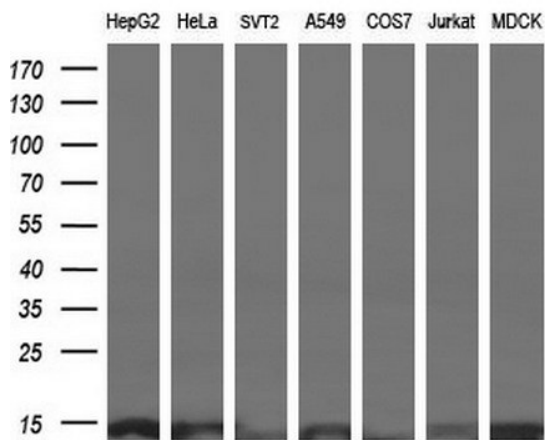
<b>Product Type:</b>	Primary Antibodies
<b>Clone Name:</b>	OTI2C12
<b>Applications:</b>	IF, IHC, WB
<b>Recommended Dilution:</b>	WB 1:2000, IHC 1:150, IF 1:100
<b>Reactivity:</b>	Human, Mouse, Rat
<b>Host:</b>	Mouse
<b>Isotype:</b>	IgG1
<b>Clonality:</b>	Monoclonal
<b>Immunogen:</b>	Full length human recombinant protein of human ROMO1(NP_542786) produced in HEK293T cell.
<b>Formulation:</b>	PBS (pH 7.3) containing 1% BSA, 50% glycerol and 0.02% sodium azide.
<b>Concentration:</b>	1 mg/ml
<b>Purification:</b>	Purified from mouse ascites fluids or tissue culture supernatant by affinity chromatography (protein A/G)
<b>Conjugation:</b>	Unconjugated
<b>Storage:</b>	Store at -20°C as received.
<b>Stability:</b>	Stable for 12 months from date of receipt.
<b>Predicted Protein Size:</b>	8 kDa
<b>Gene Name:</b>	reactive oxygen species modulator 1
<b>Database Link:</b>	<a href="#">NP_542786</a> <a href="#">Entrez Gene 140823 Human</a> <a href="#">P60602</a>
<b>Synonyms:</b>	bA353C18.2; C20orf52; MTGM; MTGMP
<b>Protein Families:</b>	Transmembrane



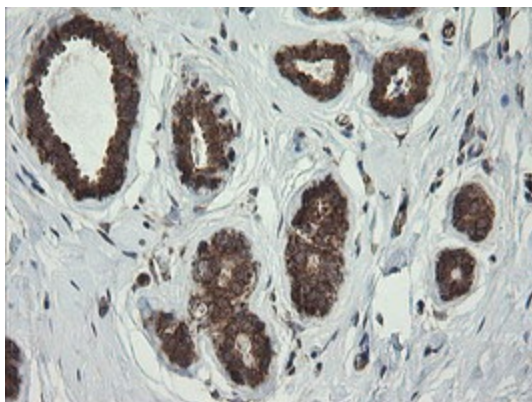
[View online »](#)

**Product images:**


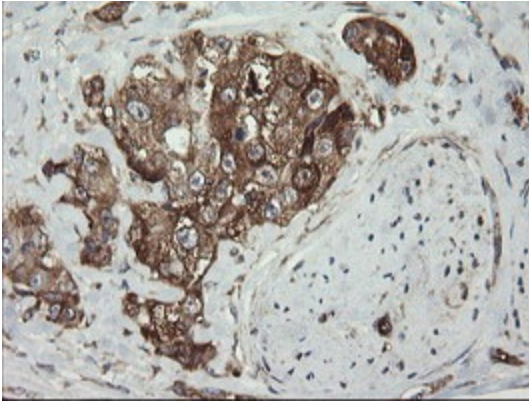
HEK293T cells were transfected with the pCMV6-ENTRY control (Cat# [PS100001], Left lane) or pCMV6-ENTRY ROMO1 (Cat# [RC210655], Right lane) cDNA for 48 hrs and lysed. Equivalent amounts of cell lysates (5 ug per lane) were separated by SDS-PAGE and immunoblotted with anti-ROMO1 (Cat# [TA505580]). Positive lysates [LY409065] (100ug) and [LC409065] (20ug) can be purchased separately from OriGene.



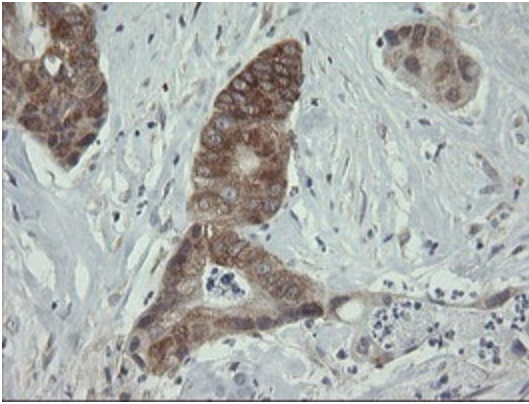
Western blot analysis of extracts (10ug) from 7 different cell lines by using anti-ROMO1 monoclonal antibody at 1:200 dilution.



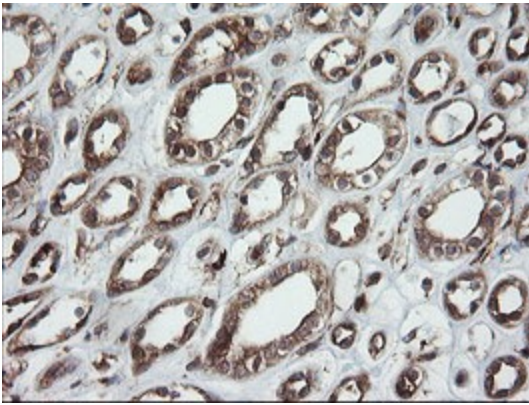
Immunohistochemical staining of paraffin-embedded Human breast tissue within the normal limits using anti-ROMO1 mouse monoclonal antibody. (Heat-induced epitope retrieval by 10mM citric buffer, pH6.0, 100°C for 10min, [TA505580])



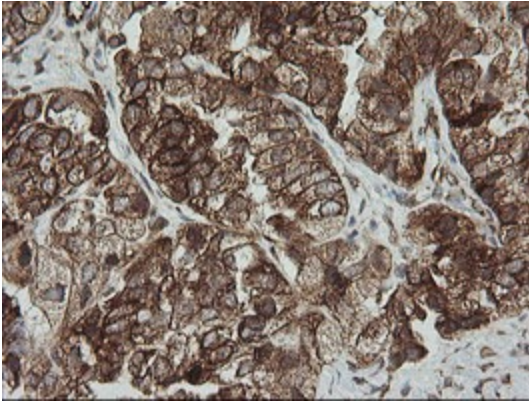
Immunohistochemical staining of paraffin-embedded Adenocarcinoma of Human breast tissue using anti-ROMO1 mouse monoclonal antibody. (Heat-induced epitope retrieval by 10mM citric buffer, pH6.0, 100°C for 10min, [TA505580])



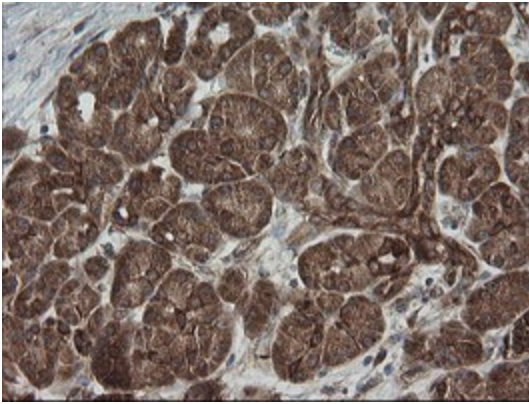
Immunohistochemical staining of paraffin-embedded Adenocarcinoma of Human colon tissue using anti-ROMO1 mouse monoclonal antibody. (Heat-induced epitope retrieval by 10mM citric buffer, pH6.0, 100°C for 10min, [TA505580])



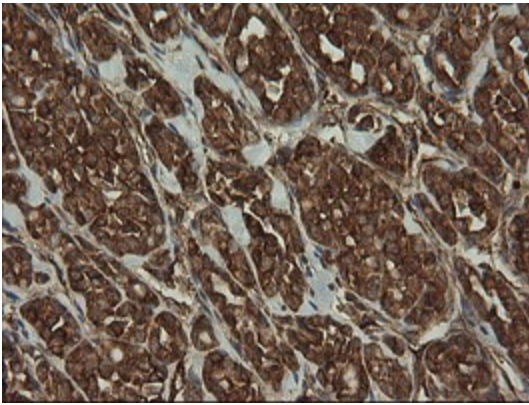
Immunohistochemical staining of paraffin-embedded Human Kidney tissue within the normal limits using anti-ROMO1 mouse monoclonal antibody. (Heat-induced epitope retrieval by 10mM citric buffer, pH6.0, 100°C for 10min, [TA505580])



Immunohistochemical staining of paraffin-embedded Adenocarcinoma of Human ovary tissue using anti-ROMO1 mouse monoclonal antibody. (Heat-induced epitope retrieval by 10mM citric buffer, pH6.0, 100°C for 10min, [TA505580])

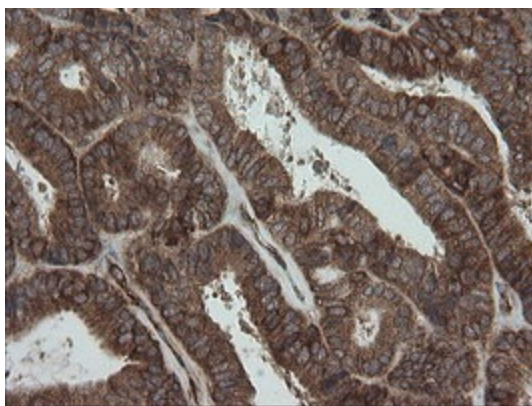


Immunohistochemical staining of paraffin-embedded Human pancreas tissue within the normal limits using anti-ROMO1 mouse monoclonal antibody. (Heat-induced epitope retrieval by 10mM citric buffer, pH6.0, 100°C for 10min, [TA505580])

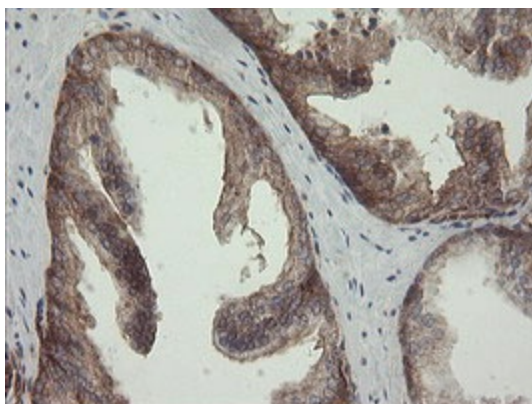


Immunohistochemical staining of paraffin-embedded Carcinoma of Human thyroid tissue using anti-ROMO1 mouse monoclonal antibody. (Heat-induced epitope retrieval by 10mM citric buffer, pH6.0, 100°C for 10min, [TA505580])

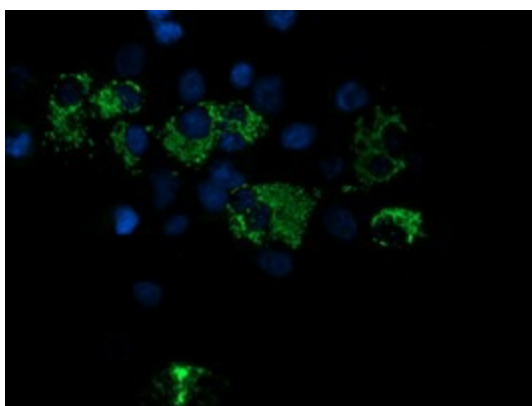




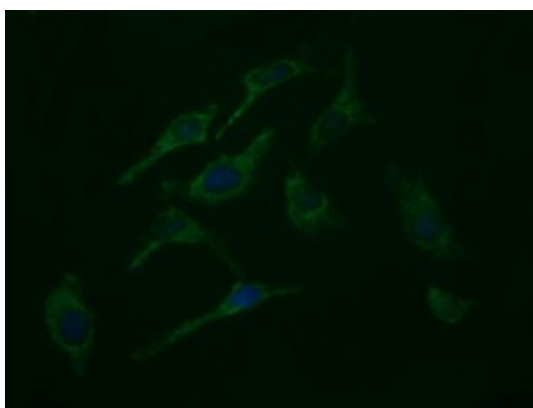
Immunohistochemical staining of paraffin-embedded Adenocarcinoma of Human endometrium tissue using anti-ROMO1 mouse monoclonal antibody. (Heat-induced epitope retrieval by 10mM citric buffer, pH6.0, 100°C for 10min, [TA505580])



Immunohistochemical staining of paraffin-embedded Human prostate tissue within the normal limits using anti-ROMO1 mouse monoclonal antibody. (Heat-induced epitope retrieval by 10mM citric buffer, pH6.0, 100°C for 10min, [TA505580])



Anti-ROMO1 mouse monoclonal antibody ([TA505580]) immunofluorescent staining of COS7 cells transiently transfected by pCMV6-ENTRY ROMO1 ([RC210655]).



Immunofluorescent staining of HeLa cells using anti-ROMO1 mouse monoclonal antibody (TA505580).