

Product datasheet for **TA505580BM**

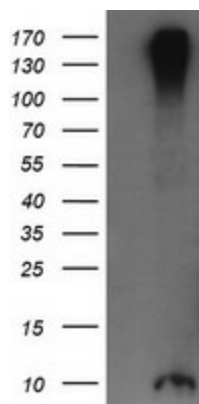
ROMO1 Mouse Monoclonal Antibody (HRP conjugated) [Clone ID: OTI2C12]

Product data:

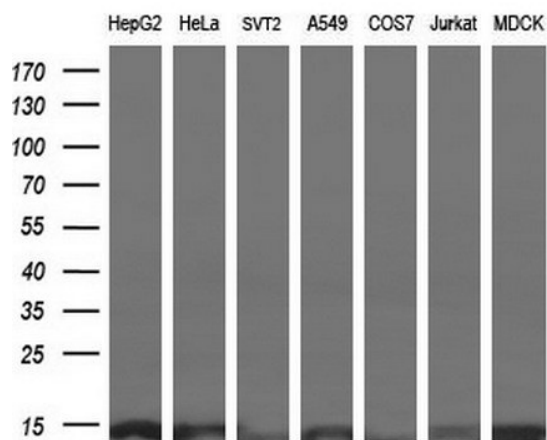
Product Type:	Primary Antibodies
Clone Name:	OTI2C12
Applications:	IF, IHC, WB
Recommended Dilution:	WB 1:2000, IHC 1:150, IF 1:100
Reactivity:	Human, Mouse, Rat
Host:	Mouse
Isotype:	IgG1
Clonality:	Monoclonal
Immunogen:	Full length human recombinant protein of human ROMO1(NP_542786) produced in HEK293T cell.
Formulation:	PBS (pH 7.3) containing 1% BSA, 50% glycerol.
Concentration:	0.5 mg/ml
Purification:	Purified from mouse ascites fluids or tissue culture supernatant by affinity chromatography (protein A/G)
Conjugation:	HRP
Storage:	Store at -20°C as received.
Stability:	Stable for 12 months from date of receipt.
Predicted Protein Size:	8 kDa
Gene Name:	reactive oxygen species modulator 1
Database Link:	NP_542786 Entrez Gene 140823 Human P60602
Synonyms:	bA353C18.2; C20orf52; MTGM; MTGMP
Protein Families:	Transmembrane



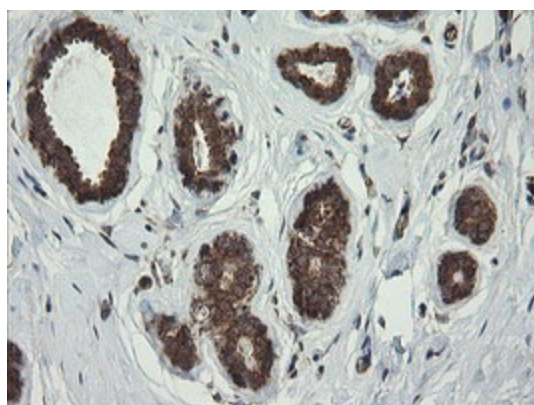
[View online »](#)

Product images:


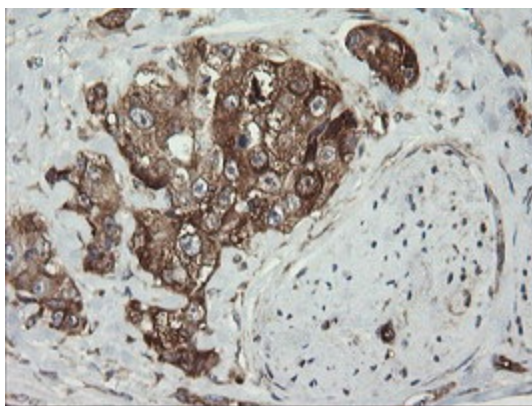
HEK293T cells were transfected with the pCMV6-ENTRY control (Cat# [PS100001], Left lane) or pCMV6-ENTRY ROMO1 (Cat# [RC210655], Right lane) cDNA for 48 hrs and lysed. Equivalent amounts of cell lysates (5 ug per lane) were separated by SDS-PAGE and immunoblotted with anti-ROMO1 (Cat# [TA505580]). Positive lysates [LY409065] (100ug) and [LC409065] (20ug) can be purchased separately from OriGene.



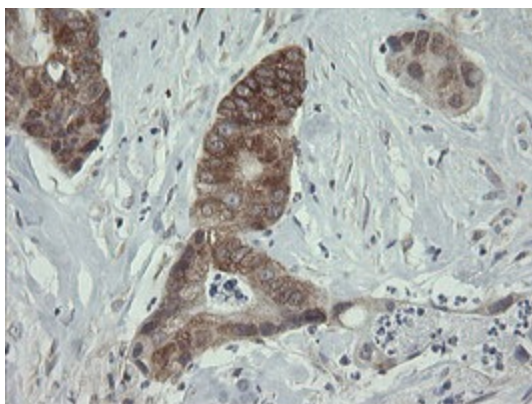
Western blot analysis of extracts (10ug) from 7 different cell lines by using anti-ROMO1 monoclonal antibody at 1:200 dilution.



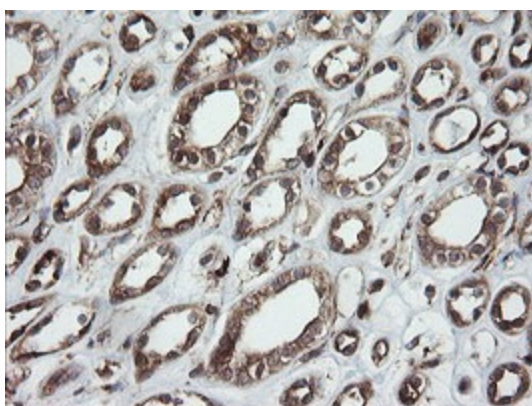
Immunohistochemical staining of paraffin-embedded Human breast tissue within the normal limits using anti-ROMO1 mouse monoclonal antibody. (Heat-induced epitope retrieval by 10mM citric buffer, pH6.0, 100°C for 10min, [TA505580])



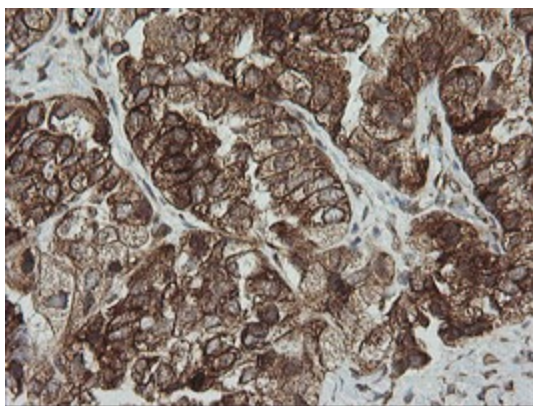
Immunohistochemical staining of paraffin-embedded Adenocarcinoma of Human breast tissue using anti-ROMO1 mouse monoclonal antibody. (Heat-induced epitope retrieval by 10mM citric buffer, pH6.0, 100°C for 10min, [TA505580])



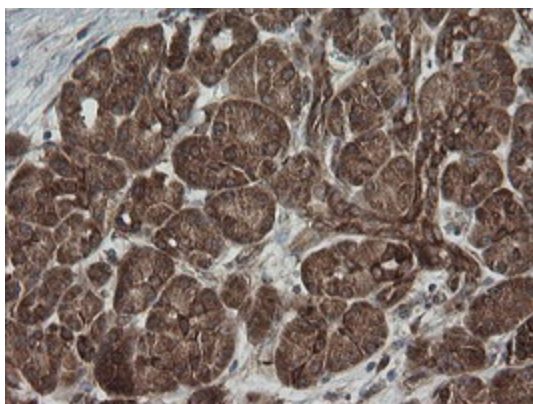
Immunohistochemical staining of paraffin-embedded Adenocarcinoma of Human colon tissue using anti-ROMO1 mouse monoclonal antibody. (Heat-induced epitope retrieval by 10mM citric buffer, pH6.0, 100°C for 10min, [TA505580])



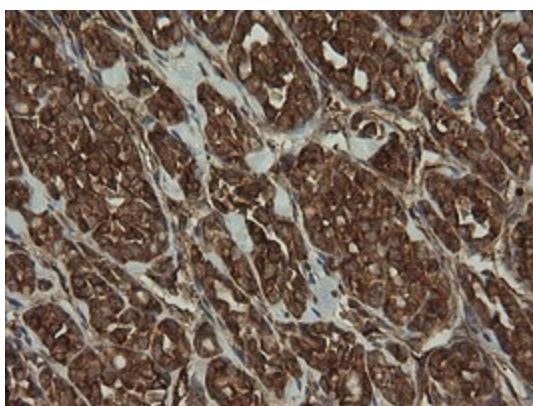
Immunohistochemical staining of paraffin-embedded Human Kidney tissue within the normal limits using anti-ROMO1 mouse monoclonal antibody. (Heat-induced epitope retrieval by 10mM citric buffer, pH6.0, 100°C for 10min, [TA505580])



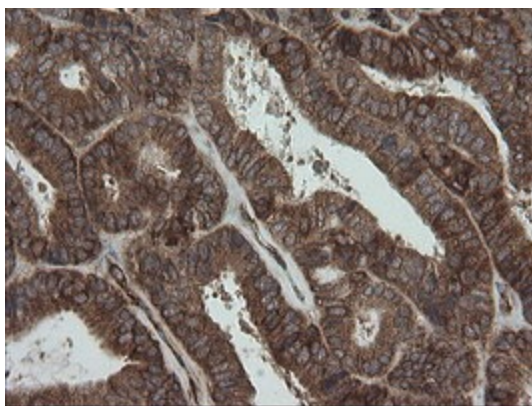
Immunohistochemical staining of paraffin-embedded Adenocarcinoma of Human ovary tissue using anti-ROMO1 mouse monoclonal antibody. (Heat-induced epitope retrieval by 10mM citric buffer, pH6.0, 100°C for 10min, [TA505580])



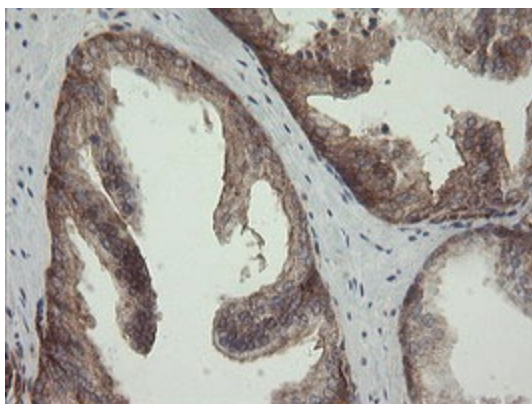
Immunohistochemical staining of paraffin-embedded Human pancreas tissue within the normal limits using anti-ROMO1 mouse monoclonal antibody. (Heat-induced epitope retrieval by 10mM citric buffer, pH6.0, 100°C for 10min, [TA505580])



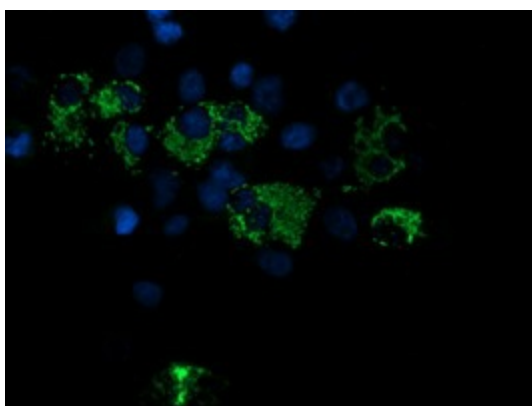
Immunohistochemical staining of paraffin-embedded Carcinoma of Human thyroid tissue using anti-ROMO1 mouse monoclonal antibody. (Heat-induced epitope retrieval by 10mM citric buffer, pH6.0, 100°C for 10min, [TA505580])



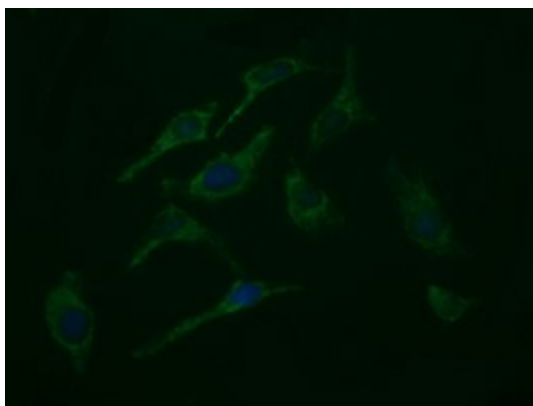
Immunohistochemical staining of paraffin-embedded Adenocarcinoma of Human endometrium tissue using anti-ROMO1 mouse monoclonal antibody. (Heat-induced epitope retrieval by 10mM citric buffer, pH6.0, 100°C for 10min, [TA505580])



Immunohistochemical staining of paraffin-embedded Human prostate tissue within the normal limits using anti-ROMO1 mouse monoclonal antibody. (Heat-induced epitope retrieval by 10mM citric buffer, pH6.0, 100°C for 10min, [TA505580])



Anti-ROMO1 mouse monoclonal antibody ([TA505580]) immunofluorescent staining of COS7 cells transiently transfected by pCMV6-ENTRY ROMO1 ([RC210655]).



Immunofluorescent staining of HeLa cells using anti-ROMO1 mouse monoclonal antibody (TA505580).