

Product datasheet for **TA505567AM**

C16orf9 (FAM234A) Mouse Monoclonal Antibody (Biotin conjugated) [Clone ID: OTI3B3]

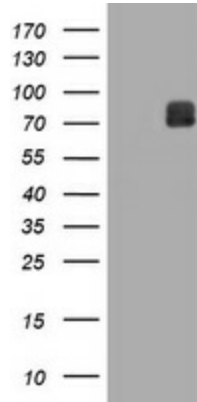
Product data:

Product Type:	Primary Antibodies
Clone Name:	OTI3B3
Applications:	IHC, WB
Recommended Dilution:	WB 1:2000, IHC 1:150
Reactivity:	Human
Host:	Mouse
Isotype:	IgG1
Clonality:	Monoclonal
Immunogen:	Full length human recombinant protein of human ITFG3 (NP_114428) produced in HEK293T cell.
Formulation:	PBS (pH 7.3) containing 1% BSA, 50% glycerol and 0.02% sodium azide.
Concentration:	0.5 mg/ml
Purification:	Purified from mouse ascites fluids or tissue culture supernatant by affinity chromatography (protein A/G)
Conjugation:	Biotin
Storage:	Store at -20°C as received.
Stability:	Stable for 12 months from date of receipt.
Predicted Protein Size:	59.5 kDa
Gene Name:	family with sequence similarity 234 member A
Database Link:	NP_114428 Entrez Gene 83986 Human Q9H0X4
Synonyms:	C16orf9; gs19; ITFG3
Protein Families:	Transmembrane

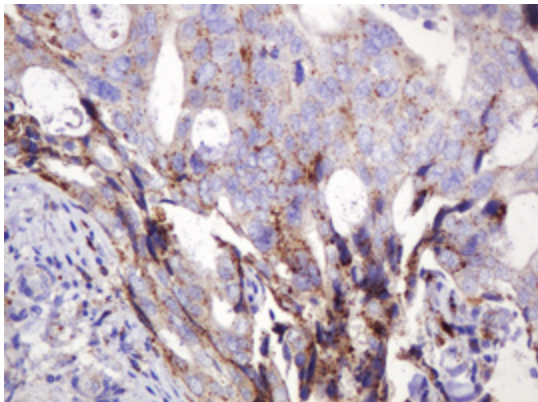


[View online »](#)

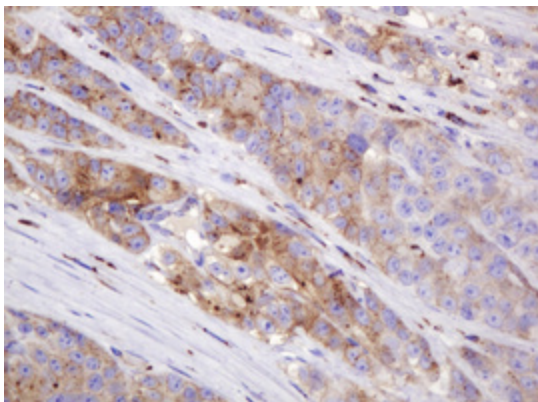
Product images:



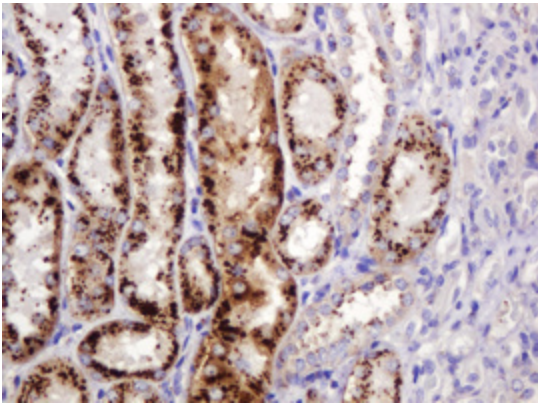
HEK293T cells were transfected with the pCMV6-ENTRY control (Cat# [PS100001], Left lane) or pCMV6-ENTRY ITFG3 (Cat# [RC202291], Right lane) cDNA for 48 hrs and lysed. Equivalent amounts of cell lysates (5 ug per lane) were separated by SDS-PAGE and immunoblotted with anti-ITFG3(Cat# [TA505567]). Positive lysates [LY410348] (100ug) and [LC410348] (20ug) can be purchased separately from OriGene.



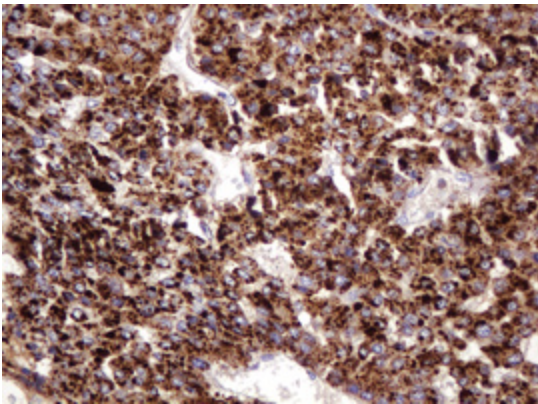
Immunohistochemical staining of paraffin-embedded Adenocarcinoma of Human breast tissue using anti-ITFG3 mouse monoclonal antibody. (Heat-induced epitope retrieval by 10mM citric buffer, pH6.0, 120°C for 3min, [TA505567])



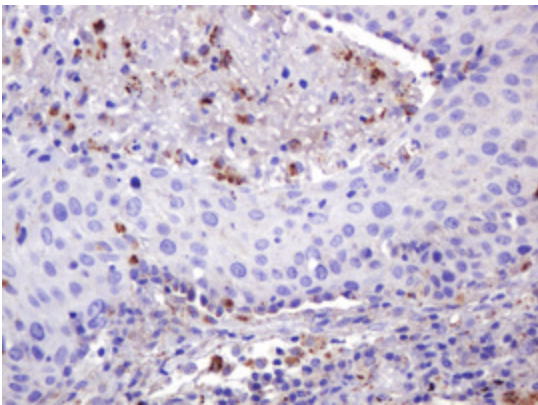
Immunohistochemical staining of paraffin-embedded Adenocarcinoma of Human colon tissue using anti-ITFG3 mouse monoclonal antibody. (Heat-induced epitope retrieval by 10mM citric buffer, pH6.0, 120°C for 3min, [TA505567])



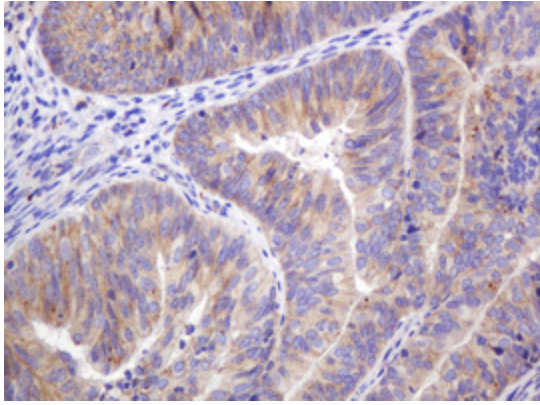
Immunohistochemical staining of paraffin-embedded Human Kidney tissue within the normal limits using anti-ITFG3 mouse monoclonal antibody. (Heat-induced epitope retrieval by 10mM citric buffer, pH6.0, 120°C for 3min, [TA505567])



Immunohistochemical staining of paraffin-embedded Carcinoma of Human liver tissue using anti-ITFG3 mouse monoclonal antibody. (Heat-induced epitope retrieval by 10mM citric buffer, pH6.0, 120°C for 3min, [TA505567])



Immunohistochemical staining of paraffin-embedded Carcinoma of Human lung tissue using anti-ITFG3 mouse monoclonal antibody. (Heat-induced epitope retrieval by 10mM citric buffer, pH6.0, 120°C for 3min, [TA505567])



Immunohistochemical staining of paraffin-embedded Adenocarcinoma of Human endometrium tissue using anti-ITFG3 mouse monoclonal antibody. (Heat-induced epitope retrieval by 10mM citric buffer, pH6.0, 120°C for 3min, [TA505567])