

Product datasheet for **TA505562**

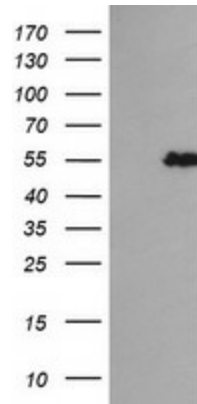
TRIM44 Mouse Monoclonal Antibody [Clone ID: OTI2H4]

Product data:

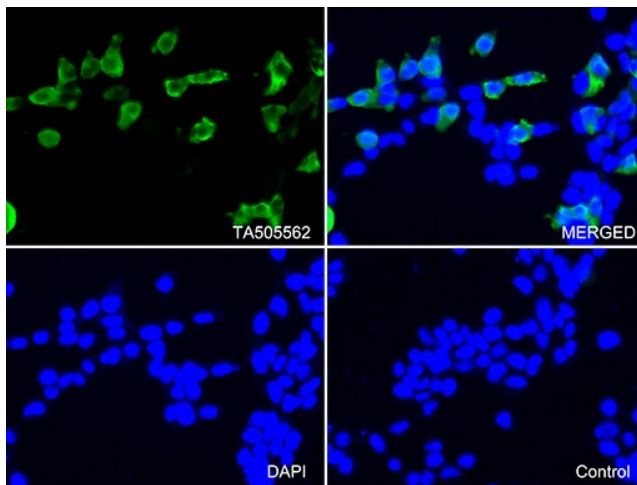
Product Type:	Primary Antibodies
Clone Name:	OTI2H4
Applications:	FC, IF, WB
Recommended Dilution:	WB 1:2000, FLOW 1:100
Reactivity:	Human, Mouse
Host:	Mouse
Isotype:	IgG1
Clonality:	Monoclonal
Immunogen:	Full length human recombinant protein of human TRIM44(NP_060053) produced in HEK293T cell.
Formulation:	PBS (pH 7.3) containing 1% BSA, 50% glycerol and 0.02% sodium azide.
Concentration:	1 mg/ml
Purification:	Purified from mouse ascites fluids or tissue culture supernatant by affinity chromatography (protein A/G)
Conjugation:	Unconjugated
Storage:	Store at -20°C as received.
Stability:	Stable for 12 months from date of receipt.
Predicted Protein Size:	38.3 kDa
Gene Name:	tripartite motif containing 44
Database Link:	NP_060053 Entrez Gene 54765 Human Q96DX7
Background:	This gene encodes a member of the tripartite motif (TRIM) family. The TRIM motif includes three zinc-binding domains, namely a RING, a B-box type 1 and a B-box type 2, and a coiled-coil region. [provided by RefSeq]
Synonyms:	DIPB; HSA249128; MC7



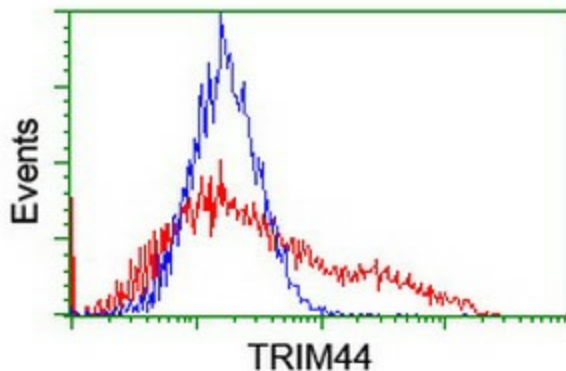
[View online »](#)

Product images:


HEK293T cells were transfected with the pCMV6-ENTRY control (Left lane) or pCMV6-ENTRY TRIM44 ([RC201074], Right lane) cDNA for 48 hrs and lysed. Equivalent amounts of cell lysates (5 ug per lane) were separated by SDS-PAGE and immunoblotted with anti-TRIM44. Positive lysates [LY413678] (100ug) and [LC413678] (20ug) can be purchased separately from OriGene.



Immunofluorescent staining of 293T cells transfected by pCMV6-ENTRY TRIM44 ([RC201074]) using anti-TRIM44 antibody (TA505562/green, upper left; DAPI/blue, lower left; MERGED, upper right). 293T cells transfected with empty vector served as a negative control (MERGED, lower right) (1:100).



HEK293T cells transfected with either [RC201074] overexpress plasmid (Red) or empty vector control plasmid (Blue) were immunostained by anti-TRIM44 antibody (TA505562), and then analyzed by flow cytometry.