

Product datasheet for **TA505561S**

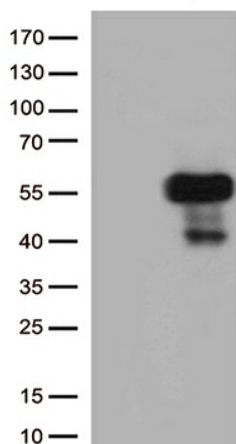
TRIM44 Mouse Monoclonal Antibody [Clone ID: OTI1E10]

Product data:

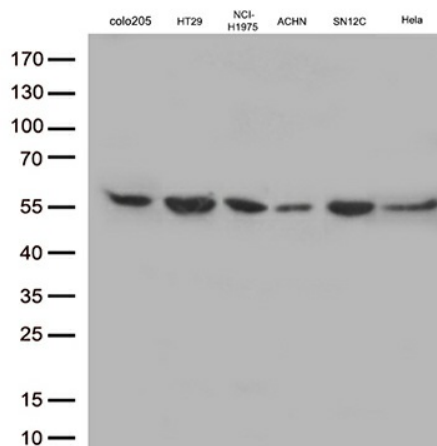
Product Type:	Primary Antibodies
Clone Name:	OTI1E10
Applications:	IF, IHC, WB
Recommended Dilution:	WB 1:2000, IHC 1:150, IF 1:100
Reactivity:	Human, Mouse
Host:	Mouse
Isotype:	IgG1
Clonality:	Monoclonal
Immunogen:	Full length human recombinant protein of human TRIM44(NP_060053) produced in HEK293T cell.
Formulation:	PBS (pH 7.3) containing 1% BSA, 50% glycerol and 0.02% sodium azide.
Concentration:	1 mg/ml
Purification:	Purified from mouse ascites fluids or tissue culture supernatant by affinity chromatography (protein A/G)
Conjugation:	Unconjugated
Storage:	Store at -20°C as received.
Stability:	Stable for 12 months from date of receipt.
Predicted Protein Size:	38.3 kDa
Gene Name:	tripartite motif containing 44
Database Link:	NP_060053 Entrez Gene 54765 Human Q96DX7
Background:	This gene encodes a member of the tripartite motif (TRIM) family. The TRIM motif includes three zinc-binding domains, namely a RING, a B-box type 1 and a B-box type 2, and a coiled-coil region. [provided by RefSeq]
Synonyms:	DIPB; HSA249128; MC7



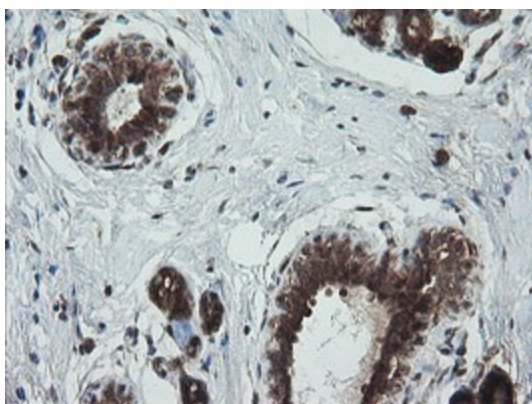
[View online »](#)

Product images:


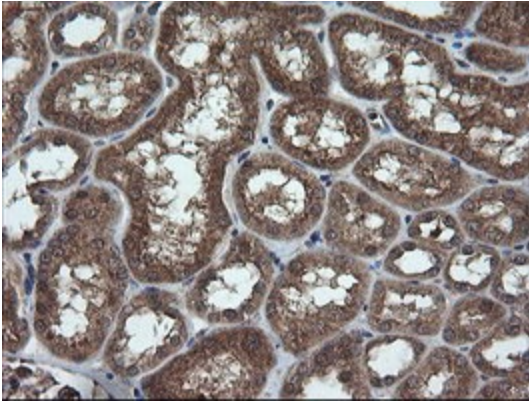
HEK293T cells were transfected with the pCMV6-ENTRY control (Cat# [PS100001], Left lane) or pCMV6-ENTRY TRIM44 (Cat# [RC201074], Right lane) cDNA for 48 hrs and lysed. Equivalent amounts of cell lysates (5 ug per lane) were separated by SDS-PAGE and immunoblotted with anti-TRIM44 (Cat# [TA505561])(1:500)



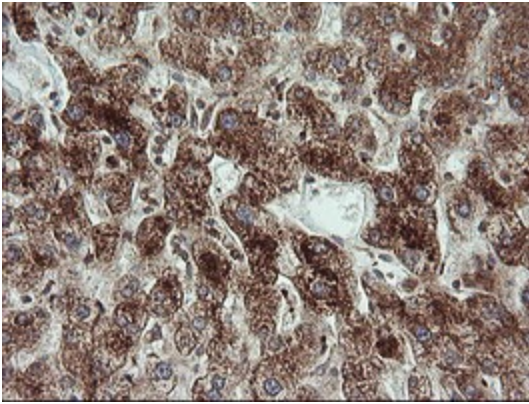
Western blot analysis of extracts (35ug) from 6 cell line lysates by using anti-TRIM44 monoclonal antibody (1:500).



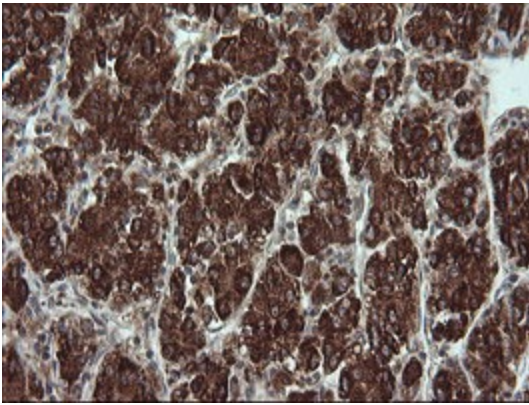
Immunohistochemical staining of paraffin-embedded Human breast tissue within the normal limits using anti-TRIM44 mouse monoclonal antibody. (Heat-induced epitope retrieval by 10mM citric buffer, pH6.0, 100°C for 10min, [TA505561])



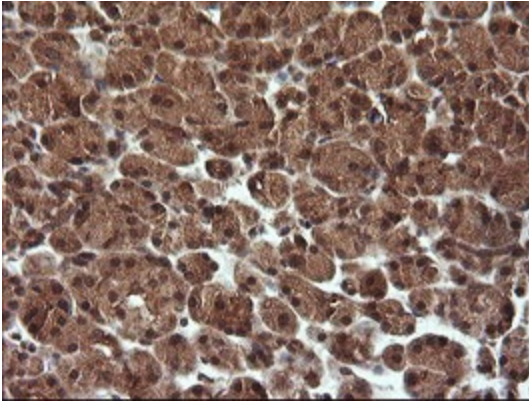
Immunohistochemical staining of paraffin-embedded Human Kidney tissue within the normal limits using anti-TRIM44 mouse monoclonal antibody. (Heat-induced epitope retrieval by 10mM citric buffer, pH6.0, 100°C for 10min, [TA505561])



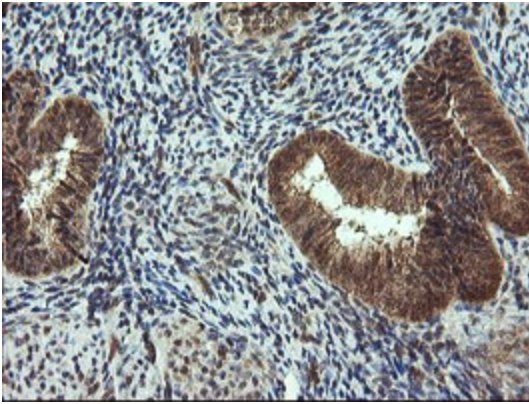
Immunohistochemical staining of paraffin-embedded Human liver tissue within the normal limits using anti-TRIM44 mouse monoclonal antibody. (Heat-induced epitope retrieval by 10mM citric buffer, pH6.0, 100°C for 10min, [TA505561])



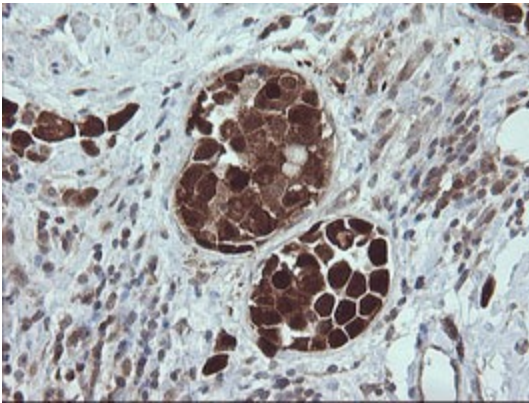
Immunohistochemical staining of paraffin-embedded Carcinoma of Human liver tissue using anti-TRIM44 mouse monoclonal antibody. (Heat-induced epitope retrieval by 10mM citric buffer, pH6.0, 100°C for 10min, [TA505561])



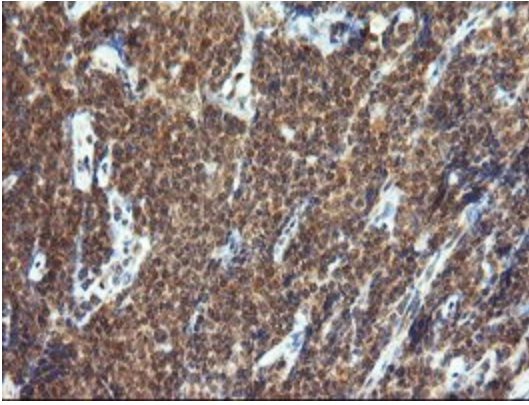
Immunohistochemical staining of paraffin-embedded Human pancreas tissue within the normal limits using anti-TRIM44 mouse monoclonal antibody. (Heat-induced epitope retrieval by 10mM citric buffer, pH6.0, 100°C for 10min, [TA505561])



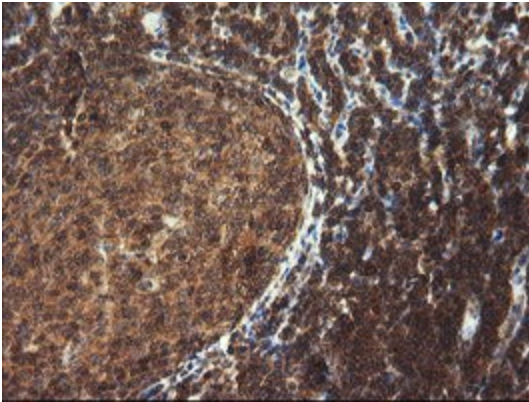
Immunohistochemical staining of paraffin-embedded Human endometrium tissue within the normal limits using anti-TRIM44 mouse monoclonal antibody. (Heat-induced epitope retrieval by 10mM citric buffer, pH6.0, 100°C for 10min, [TA505561])



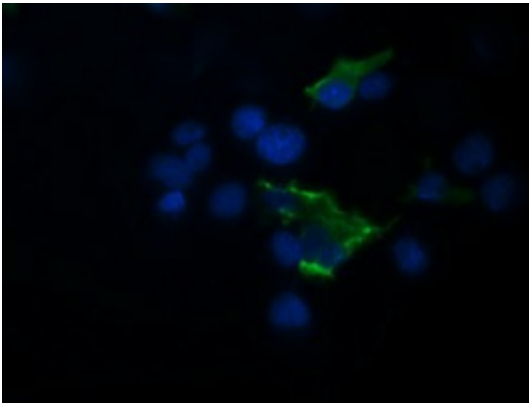
Immunohistochemical staining of paraffin-embedded Carcinoma of Human bladder tissue using anti-TRIM44 mouse monoclonal antibody. (Heat-induced epitope retrieval by 10mM citric buffer, pH6.0, 100°C for 10min, [TA505561])



Immunohistochemical staining of paraffin-embedded Human lymphoma tissue using anti-TRIM44 mouse monoclonal antibody. (Heat-induced epitope retrieval by 10mM citric buffer, pH6.0, 100°C for 10min, [TA505561])



Immunohistochemical staining of paraffin-embedded Human tonsil within the normal limits using anti-TRIM44 mouse monoclonal antibody. (Heat-induced epitope retrieval by 10mM citric buffer, pH6.0, 100°C for 10min, [TA505561])



Anti-TRIM44 mouse monoclonal antibody ([TA505561]) immunofluorescent staining of COS7 cells transiently transfected by pCMV6-ENTRY TRIM44 ([RC201074]).