

## Product datasheet for **TA505558S**

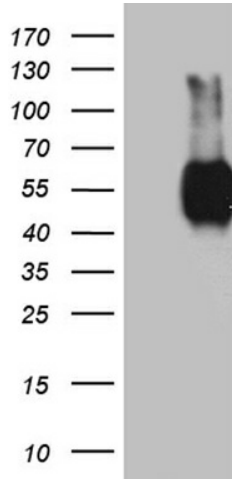
### CD272 (BTLA) Mouse Monoclonal Antibody [Clone ID: OTI2G2]

#### Product data:

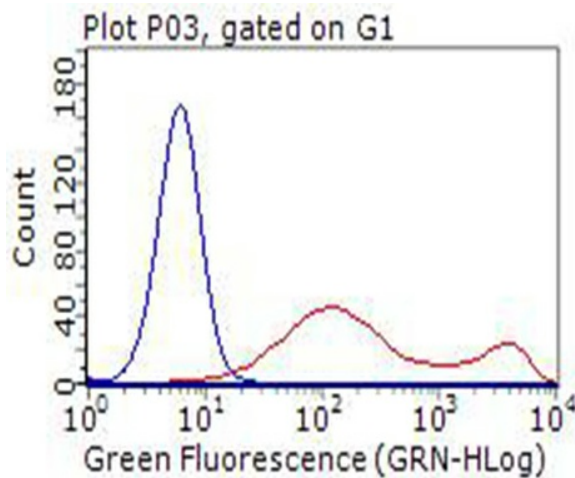
|                         |  |
|-------------------------|--|
| Product Type:           | Primary Antibodies   |
| Clone Name:             | OTI2G2   |
| Applications:           | FC, IF, WB   |
| Recommended Dilution:   | WB 1:2000, IF 1:100, FLOW 1:100  |
| Reactivity:             | Human  |
| Host:                   | Mouse  |
| Isotype:                | IgG2b  |
| Clonality:              | Monoclonal   |
| Immunogen:              | Full length human recombinant protein of human BTLA(NP_861445) produced in HEK293T cell.   |
| Formulation:            | PBS (pH 7.3) containing 1% BSA, 50% glycerol and 0.02% sodium azide.   |
| Concentration:          | 1 mg/ml  |
| Purification:           | Purified from mouse ascites fluids or tissue culture supernatant by affinity chromatography (protein A/G)  |
| Conjugation:            | Unconjugated   |
| Storage:                | Store at -20°C as received.  |
| Stability:              | Stable for 12 months from date of receipt.   |
| Predicted Protein Size: | 32.6 kDa   |
| Gene Name:              | B and T lymphocyte associated  |
| Database Link:          | <a href="#">NP_861445</a><br><a href="#">Entrez Gene 151888 Human</a><br><a href="#">Q7Z6A9</a>  |
| Background:             | BTLA expression is induced during activation of T cells, and BTLA remains expressed on Th1 cells but not Th2 cells. Like PD1 (MIM 600244) and CTLA4 (MIM 123890), BTLA interacts with a B7 homolog, B7H4. [supplied by OMIM] |
| Synonyms:               | BTLA1; CD272   |
| Protein Families:       | Transmembrane  |



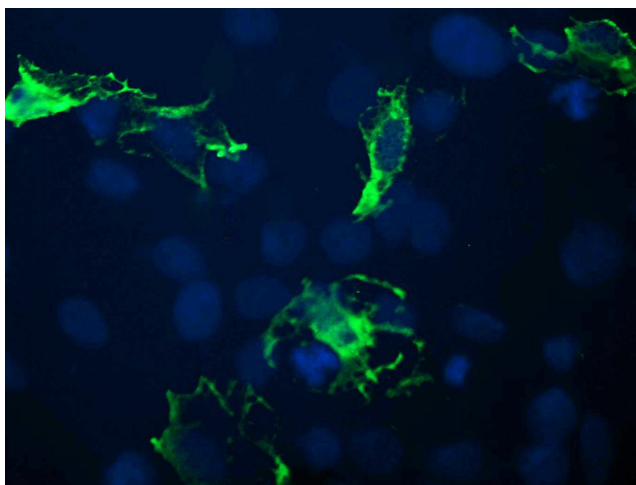
[View online »](#)

**Product images:**


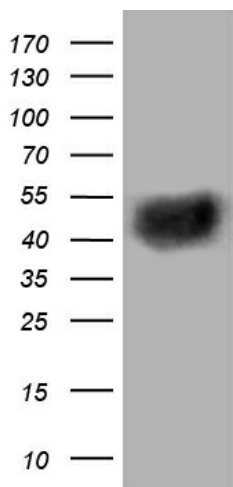
HEK293T cells were transfected with the pCMV6-ENTRY control (Left lane) or pCMV6-ENTRY BTLA ([RC219458], Right lane) cDNA for 48 hrs and lysed. Equivalent amounts of cell lysates (5 ug per lane) were separated by SDS-PAGE and immunoblotted with anti-BTLA. Positive lysates [LY403628] (100ug) and [LC403628] (20ug) can be purchased separately from OriGene.



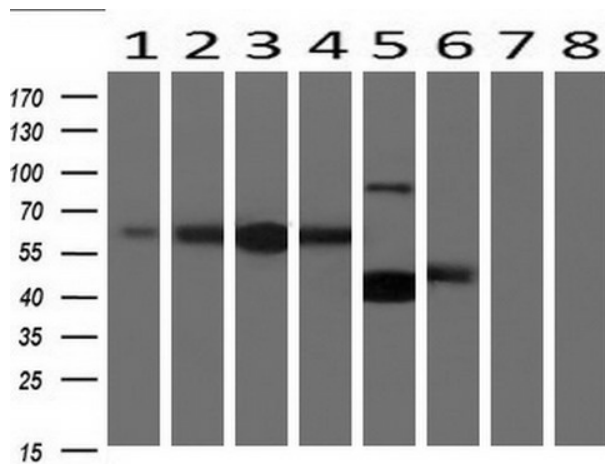
HEK293T cells transfected with either [RC219458] overexpress plasmid (Red) or empty vector control plasmid (Blue) were immunostained by anti-BTLA antibody ([TA505558]), and then analyzed by flow cytometry.



Anti-BTLA mouse monoclonal antibody ([TA505558]) immunofluorescent staining of COS7 cells transiently transfected by pCMV6-ENTRY BTLA ([RC219458]).



Western blot analysis of extracts (35ug) from PBMCs by using anti-BTLA monoclonal antibody (1:500).



Western blot analysis of extracts (10ug) from 8 Human tissue by using anti-BTLA monoclonal antibody at 1:200 (1: Testis; 2: Uterus; 3: Breast; 4: Brain; 5: Liver; 6: Ovary; 7: Thyroid gland; 8: Colon).