

Product datasheet for **TA505558AM**

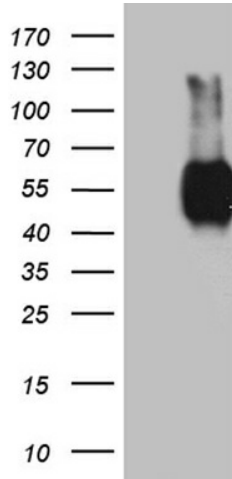
CD272 (BTLA) Mouse Monoclonal Antibody (Biotin conjugated) [Clone ID: OTI2G2]

Product data:

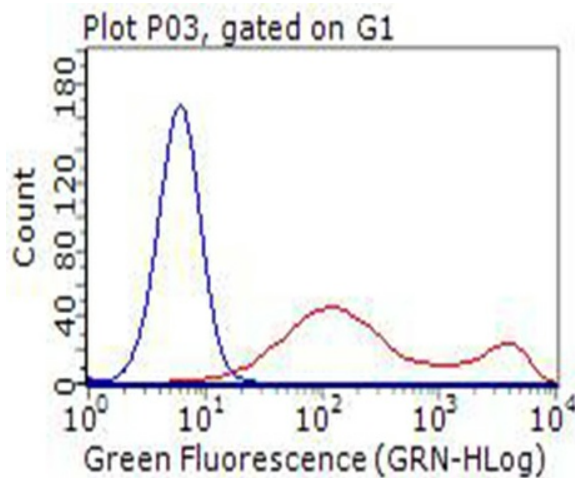
Product Type:	Primary Antibodies
Clone Name:	OTI2G2
Applications:	FC, IF, WB
Recommended Dilution:	WB 1:2000, IF 1:100, FLOW 1:100
Reactivity:	Human
Host:	Mouse
Isotype:	IgG2b
Clonality:	Monoclonal
Immunogen:	Full length human recombinant protein of human BTLA(NP_861445) produced in HEK293T cell.
Formulation:	PBS (pH 7.3) containing 1% BSA, 50% glycerol and 0.02% sodium azide.
Concentration:	0.5 mg/ml
Purification:	Purified from mouse ascites fluids or tissue culture supernatant by affinity chromatography (protein A/G)
Conjugation:	Biotin
Storage:	Store at -20°C as received.
Stability:	Stable for 12 months from date of receipt.
Predicted Protein Size:	32.6 kDa
Gene Name:	B and T lymphocyte associated
Database Link:	NP_861445 Entrez Gene 151888 Human Q7Z6A9
Background:	BTLA expression is induced during activation of T cells, and BTLA remains expressed on Th1 cells but not Th2 cells. Like PD1 (MIM 600244) and CTLA4 (MIM 123890), BTLA interacts with a B7 homolog, B7H4. [supplied by OMIM]
Synonyms:	BTLA1; CD272
Protein Families:	Transmembrane



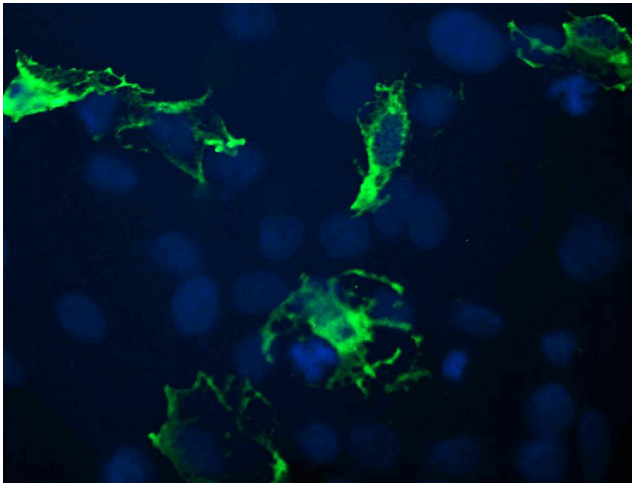
[View online »](#)

Product images:


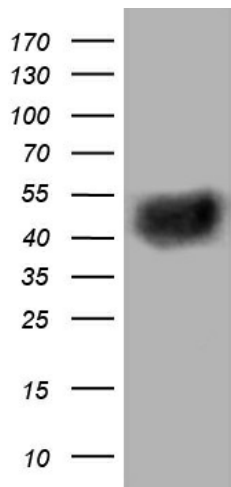
HEK293T cells were transfected with the pCMV6-ENTRY control (Left lane) or pCMV6-ENTRY BTLA ([RC219458], Right lane) cDNA for 48 hrs and lysed. Equivalent amounts of cell lysates (5 ug per lane) were separated by SDS-PAGE and immunoblotted with anti-BTLA. Positive lysates [LY403628] (100ug) and [LC403628] (20ug) can be purchased separately from OriGene.



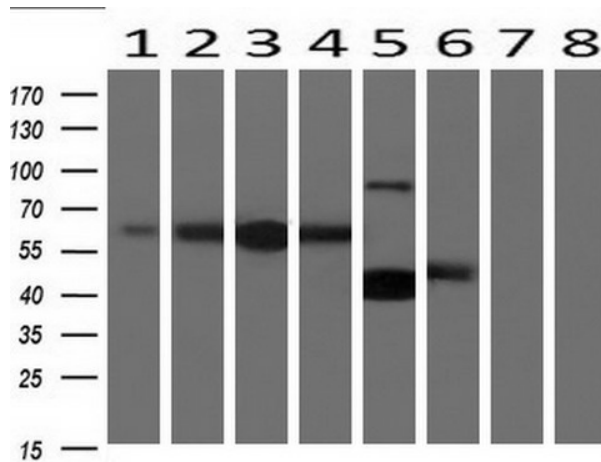
HEK293T cells transfected with either [RC219458] overexpress plasmid (Red) or empty vector control plasmid (Blue) were immunostained by anti-BTLA antibody ([TA505558]), and then analyzed by flow cytometry.



Anti-BTLA mouse monoclonal antibody ([TA505558]) immunofluorescent staining of COS7 cells transiently transfected by pCMV6-ENTRY BTLA ([RC219458]).



Western blot analysis of extracts (35ug) from PBMCs by using anti-BTLA monoclonal antibody (1:500).



Western blot analysis of extracts (10ug) from 8 Human tissue by using anti-BTLA monoclonal antibody at 1:200 (1: Testis; 2: Uterus; 3: Breast; 4: Brain; 5: Liver; 6: Ovary; 7: Thyroid gland; 8: Colon).