

## Product datasheet for **TA505552**

### Tapasin Related Protein (TAPBPL) Mouse Monoclonal Antibody [Clone ID: OTI2A4]

#### Product data:

Product Type:	Primary Antibodies
Clone Name:	OTI2A4
Applications:	IF, IHC, WB
Recommended Dilution:	WB 1:200~2000, IHC 1:150, IF 1:100
Reactivity:	Human, Dog, Rat, Monkey, Mouse
Host:	Mouse
Isotype:	IgG1
Clonality:	Monoclonal
Immunogen:	Full length human recombinant protein of human TAPBPL(NP_060479) produced in HEK293T cell.
Formulation:	PBS (pH 7.3) containing 1% BSA, 50% glycerol and 0.02% sodium azide.
Concentration:	1 mg/ml
Purification:	Purified from mouse ascites fluids or tissue culture supernatant by affinity chromatography (protein A/G)
Conjugation:	Unconjugated
Storage:	Store at -20°C as received.
Stability:	Stable for 12 months from date of receipt.
Predicted Protein Size:	50 kDa
Gene Name:	TAP binding protein like
Database Link:	<a href="#">NP_060479</a> <a href="#">Entrez Gene 213233</a> <a href="#">MouseEntrez Gene 297602</a> <a href="#">RatEntrez Gene 486727</a> <a href="#">DogEntrez Gene 712626</a> <a href="#">MonkeyEntrez Gene 55080</a> <a href="#">Human Q9BX59</a>



[View online »](#)

**Background:**

Tapasin, or TAPBP (MIM 601962), is a member of the variable-constant Ig superfamily that links major histocompatibility complex (MHC) class I molecules to the transporter associated with antigen processing (TAP; see MIM 170260) in the endoplasmic reticulum (ER). The TAPBP gene is located near the MHC complex on chromosome 6p21.3. TAPBPL is a member of the Ig superfamily that is localized on chromosome 12p13.3, a region somewhat paralogous to the MHC. [supplied by OMIM, Mar 2008]

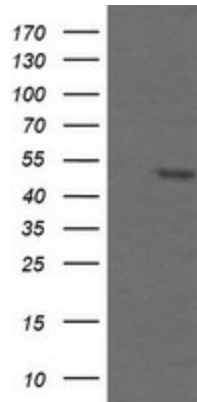
**Synonyms:**

TAPBP-R; TAPBPR

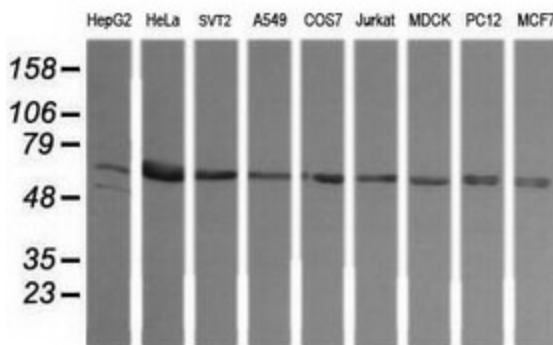
**Protein Families:**

Druggable Genome, Transmembrane

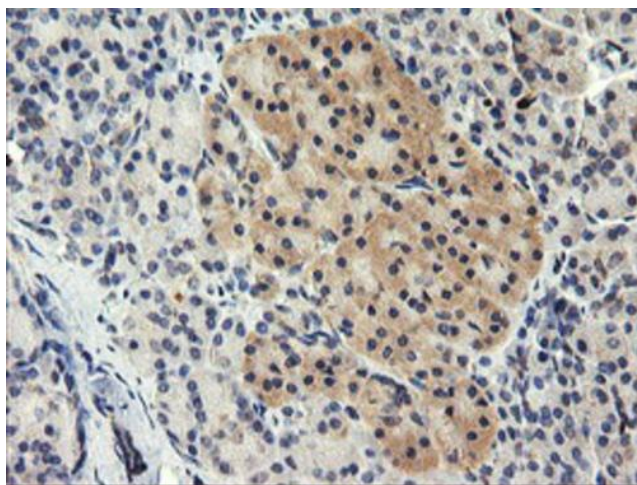
**Product images:**



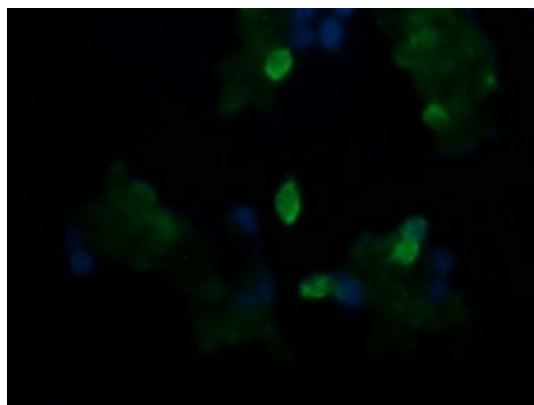
HEK293T cells were transfected with the pCMV6-ENTRY control (Left lane) or pCMV6-ENTRY TAPBPL ([RC201899], Right lane) cDNA for 48 hrs and lysed. Equivalent amounts of cell lysates (5 ug per lane) were separated by SDS-PAGE and immunoblotted with anti-TAPBPL. Positive lysates [LY413343] (100ug) and [LC413343] (20ug) can be purchased separately from OriGene.



Western blot analysis of extracts (35ug) from 9 different cell lines by using anti-TAPBPL monoclonal antibody (HepG2: human; HeLa: human; SVT2: mouse; A549: human; COS7: monkey; Jurkat: human; MDCK: canine; PC12: rat; MCF7: human).



Immunohistochemical staining of paraffin-embedded Human pancreas tissue within the normal limits using anti-TAPBPL mouse monoclonal antibody. Heat-induced epitope retrieval by EDTA solution buffer pH 8.0 at 120°C for 3 min.



Anti-TAPBPL mouse monoclonal antibody (TA505552) immunofluorescent staining of COS7 cells transiently transfected by pCMV6-ENTRY TAPBPL ([RC201899]).