

Product datasheet for **TA505550S**

DIXDC1 Mouse Monoclonal Antibody [Clone ID: OTI6B6]

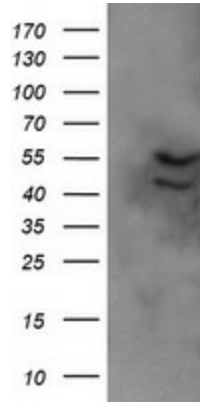
Product data:

Product Type:	Primary Antibodies
Clone Name:	OTI6B6
Applications:	IF, IHC, WB
Recommended Dilution:	WB 1:200~2000, IHC 1:150, IF 1:100
Reactivity:	Human, Monkey, Mouse, Rat
Host:	Mouse
Isotype:	IgG1
Clonality:	Monoclonal
Immunogen:	Full length human recombinant protein of human DIXDC1(NP_219493) produced in HEK293T cell.
Formulation:	PBS (pH 7.3) containing 1% BSA, 50% glycerol and 0.02% sodium azide.
Concentration:	1 mg/ml
Purification:	Purified from mouse ascites fluids or tissue culture supernatant by affinity chromatography (protein A/G)
Conjugation:	Unconjugated
Storage:	Store at -20°C as received.
Stability:	Stable for 12 months from date of receipt.
Predicted Protein Size:	53.8 kDa
Gene Name:	DIX domain containing 1
Database Link:	NP_219493 Entrez Gene 710847 Monkey Entrez Gene 85458 Human Q155Q3
Synonyms:	CCD1

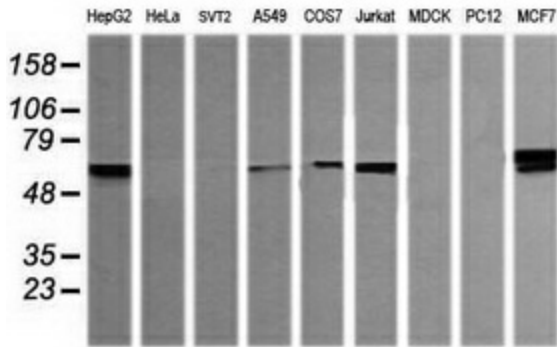


[View online »](#)

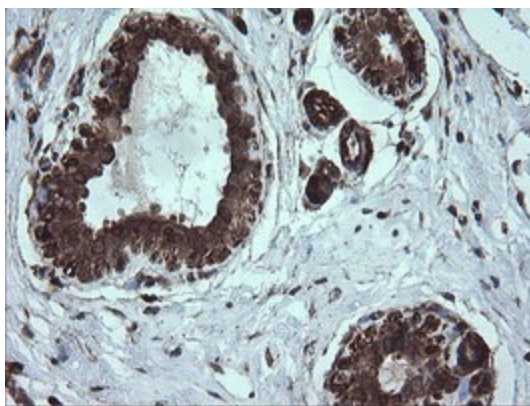
Product images:



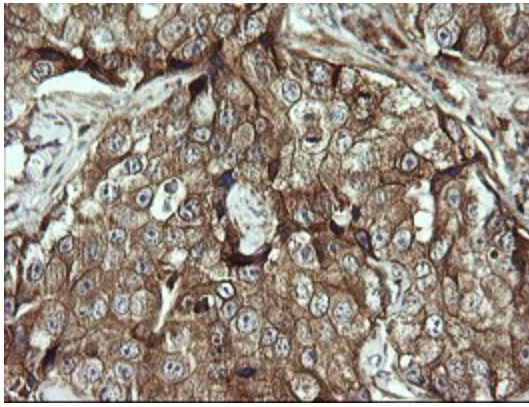
HEK293T cells were transfected with the pCMV6-ENTRY control (Cat# [PS100001], Left lane) or pCMV6-ENTRY DIXDC1 (Cat# [RC206130], Right lane) cDNA for 48 hrs and lysed. Equivalent amounts of cell lysates (5 ug per lane) were separated by SDS-PAGE and immunoblotted with anti-DIXDC1 (Cat# [TA505550]). Positive lysates [LY409548] (100ug) and [LC409548] (20ug) can be purchased separately from OriGene.



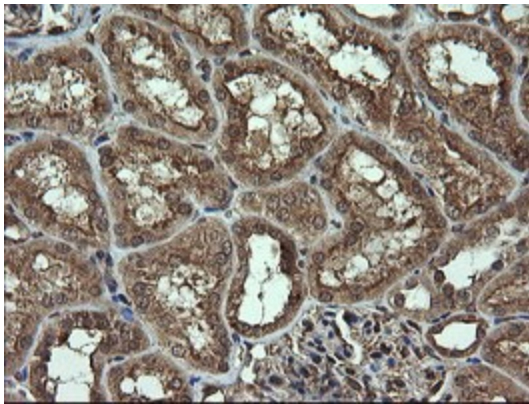
Western blot analysis of extracts (35ug) from 9 different cell lines by using anti-DIXDC1 monoclonal antibody (HepG2: human; HeLa: human; SVT2: mouse; A549: human; COS7: monkey; Jurkat: human; MDCK: canine; PC12: rat; MCF7: human).



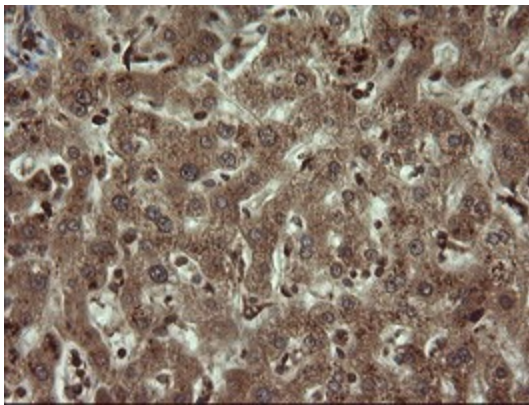
Immunohistochemical staining of paraffin-embedded Human breast tissue within the normal limits using anti-DIXDC1 mouse monoclonal antibody. (Heat-induced epitope retrieval by 10mM citric buffer, pH6.0, 120°C for 3min, [TA505550])



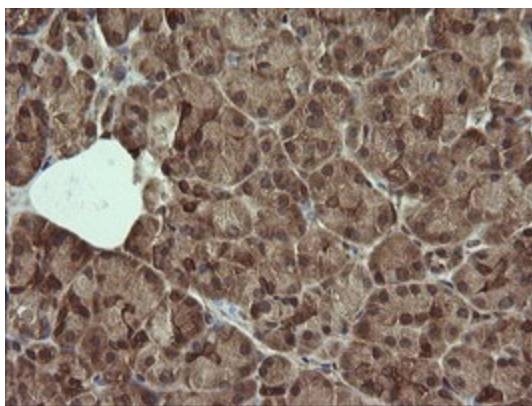
Immunohistochemical staining of paraffin-embedded Adenocarcinoma of Human breast tissue using anti-DIXDC1 mouse monoclonal antibody. (Heat-induced epitope retrieval by 10mM citric buffer, pH6.0, 120°C for 3min, [TA505550])



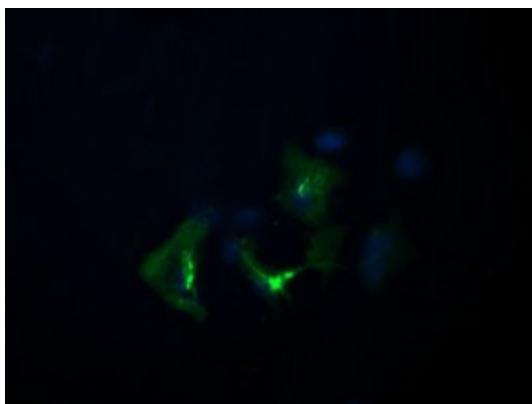
Immunohistochemical staining of paraffin-embedded Human Kidney tissue within the normal limits using anti-DIXDC1 mouse monoclonal antibody. (Heat-induced epitope retrieval by 10mM citric buffer, pH6.0, 120°C for 3min, [TA505550])



Immunohistochemical staining of paraffin-embedded Human liver tissue within the normal limits using anti-DIXDC1 mouse monoclonal antibody. (Heat-induced epitope retrieval by 10mM citric buffer, pH6.0, 120°C for 3min, [TA505550])



Immunohistochemical staining of paraffin-embedded Carcinoma of Human thyroid tissue using anti-DIXDC1 mouse monoclonal antibody. (Heat-induced epitope retrieval by 10mM citric buffer, pH6.0, 120°C for 3min, [TA505550])



Anti-DIXDC1 mouse monoclonal antibody ([TA505550]) immunofluorescent staining of COS7 cells transiently transfected by pCMV6-ENTRY DIXDC1 ([RC206130]).