

Product datasheet for **TA505537AM**

PCDH7 Mouse Monoclonal Antibody (Biotin conjugated) [Clone ID: OT11F7]

Product data:

Product Type:	Primary Antibodies
Clone Name:	OT11F7
Applications:	IF, IHC, WB
Recommended Dilution:	WB 1:2000, IHC 1:150, IF 1:100
Reactivity:	Human, Mouse, Rat
Host:	Mouse
Isotype:	IgG2b
Clonality:	Monoclonal
Immunogen:	Full length human recombinant protein of human PCDH7(NP_115833) produced in HEK293T cell.
Formulation:	PBS (pH 7.3) containing 1% BSA, 50% glycerol and 0.02% sodium azide.
Concentration:	0.5 mg/ml
Purification:	Purified from mouse ascites fluids or tissue culture supernatant by affinity chromatography (protein A/G)
Conjugation:	Biotin
Storage:	Store at -20°C as received.
Stability:	Stable for 12 months from date of receipt.
Predicted Protein Size:	132.4 kDa
Gene Name:	protocadherin 7
Database Link:	NP_115833 Entrez Gene 54216 Mouse Entrez Gene 5099 Human O60245
Background:	This gene belongs to the protocadherin gene family, a subfamily of the cadherin superfamily. The gene encodes a protein with an extracellular domain containing 7 cadherin repeats. The gene product is an integral membrane protein that is thought to function in cell-cell recognition and adhesion. Alternative splicing yields isoforms with unique cytoplasmic tails. [provided by RefSeq]

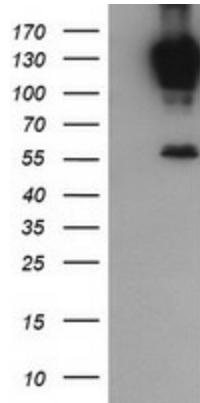


[View online »](#)

Synonyms: BH-Pcdh; BHPCDH; PPP1R120

Protein Families: Druggable Genome, Transmembrane

Product images:



HEK293T cells were transfected with the pCMV6-ENTRY control (Left lane) or pCMV6-ENTRY PCDH7 ([RC223033], Right lane) cDNA for 48 hrs and lysed. Equivalent amounts of cell lysates (5 ug per lane) were separated by SDS-PAGE and immunoblotted with anti-PCDH7. Positive lysates [LY410093] (100ug) and [LC410093] (20ug) can be purchased separately from OriGene.

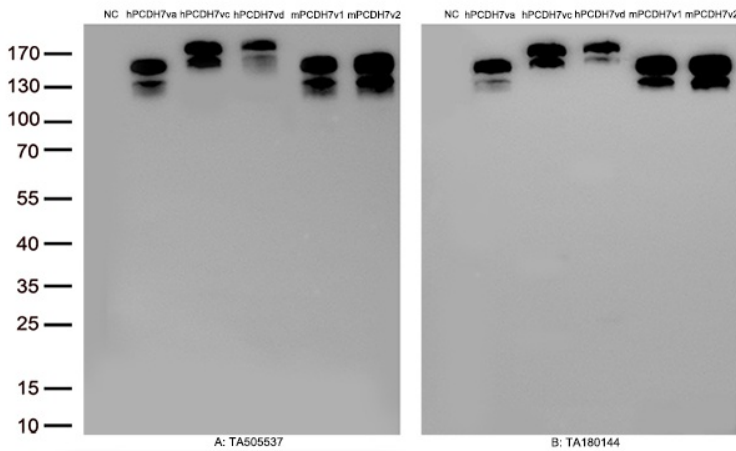
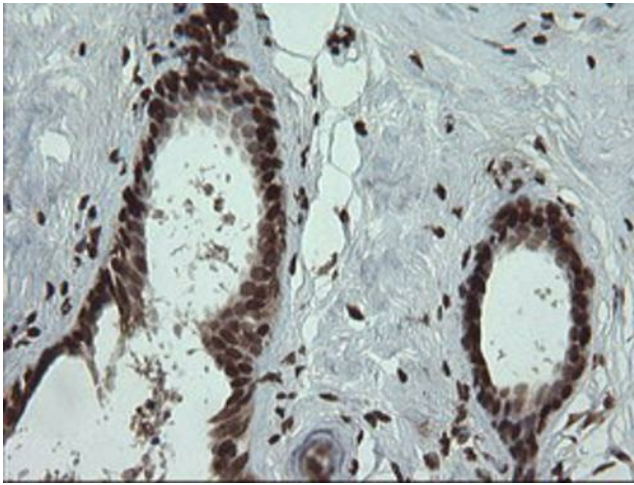
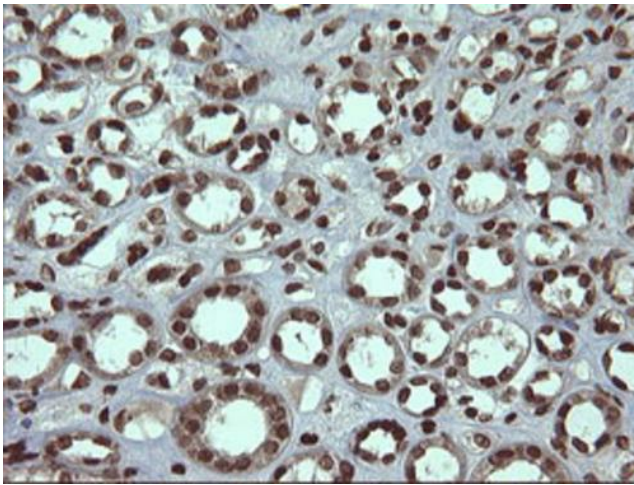


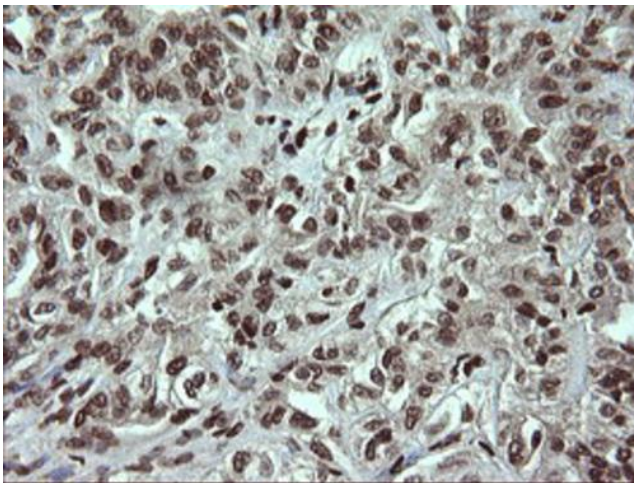
Figure A, Western blot analysis of overexpressed lysates(15ug per lane) from HEK293T cells transfected with empty plasmid ([PS100001], NC), human PCDH7 plasmid ([RC213200], hPCDH7 va), human PCDH7 plasmid ([RC223033], hPCDH7 vc), human PCDH7 plasmid ([RC230683], hPCDH7 vd), mouse PCDH7 plasmid ([MR214196], mPCDH7 v1), mouse PCDH7 plasmid ([MR214198], mPCDH7 v2) using anti-PCDH7 antibody [TA505537] (1:500). Figure B, Western blot analysis of the same samples as figure A with anti-DDK antibody ([TA180144], 1:1000)



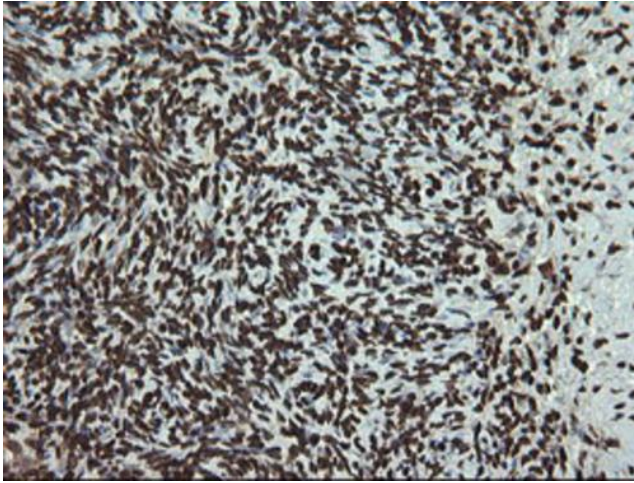
Immunohistochemical staining of paraffin-embedded Human breast tissue within the normal limits using anti-PCDH7 mouse monoclonal antibody. (Heat-induced epitope retrieval by 10mM citric buffer, pH6.0, 100°C for 10min, [TA505537])



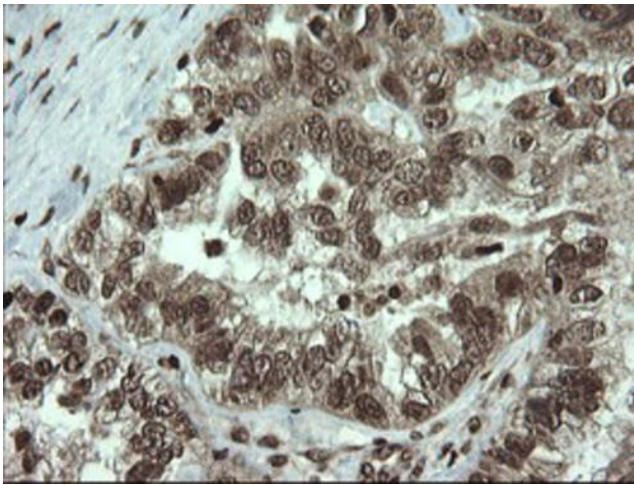
Immunohistochemical staining of paraffin-embedded Human Kidney tissue within the normal limits using anti-PCDH7 mouse monoclonal antibody. (Heat-induced epitope retrieval by 10mM citric buffer, pH6.0, 100°C for 10min, [TA505537])



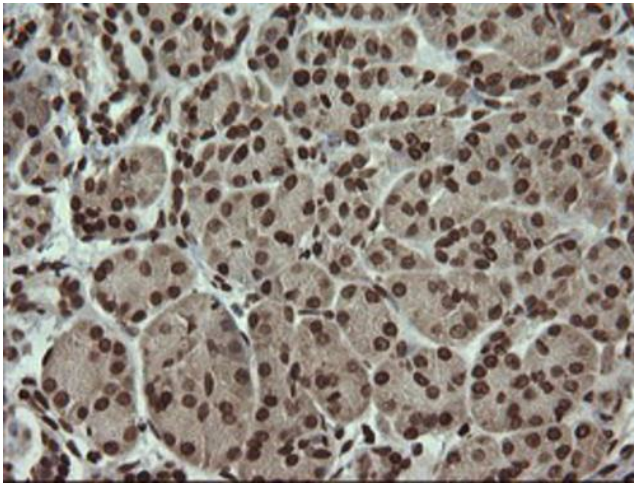
Immunohistochemical staining of paraffin-embedded Carcinoma of Human kidney tissue using anti-PCDH7 mouse monoclonal antibody. (Heat-induced epitope retrieval by 10mM citric buffer, pH6.0, 100°C for 10min, [TA505537])



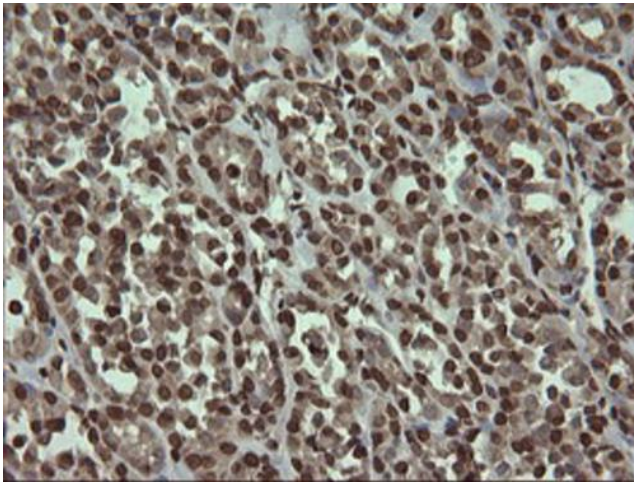
Immunohistochemical staining of paraffin-embedded Human Ovary tissue within the normal limits using anti-PCDH7 mouse monoclonal antibody. (Heat-induced epitope retrieval by 10mM citric buffer, pH6.0, 100°C for 10min, [TA505537])



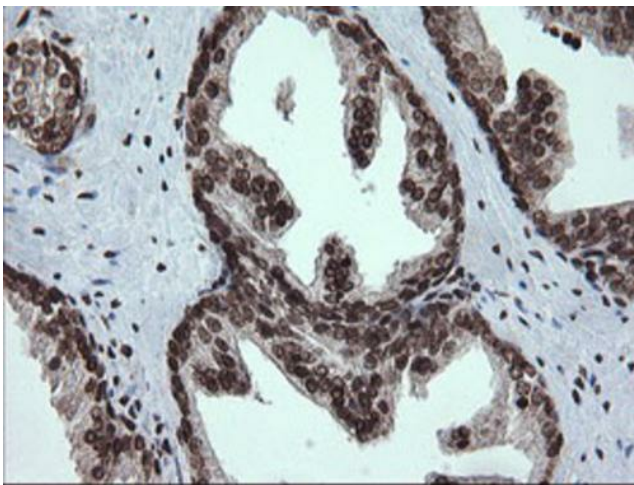
Immunohistochemical staining of paraffin-embedded Adenocarcinoma of Human ovary tissue using anti-PCDH7 mouse monoclonal antibody. (Heat-induced epitope retrieval by 10mM citric buffer, pH6.0, 100°C for 10min, [TA505537])



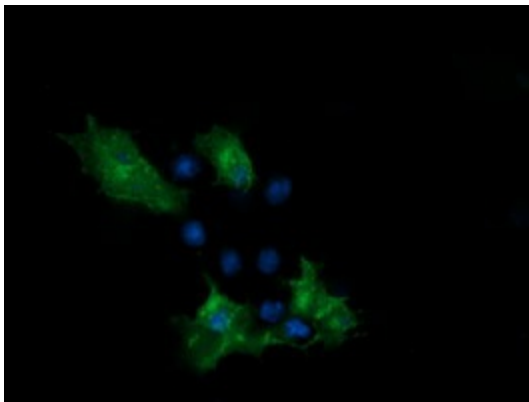
Immunohistochemical staining of paraffin-embedded Human pancreas tissue within the normal limits using anti-PCDH7 mouse monoclonal antibody. (Heat-induced epitope retrieval by 10mM citric buffer, pH6.0, 100°C for 10min, [TA505537])



Immunohistochemical staining of paraffin-embedded Carcinoma of Human thyroid tissue using anti-PCDH7 mouse monoclonal antibody. (Heat-induced epitope retrieval by 10mM citric buffer, pH6.0, 100°C for 10min, [TA505537])



Immunohistochemical staining of paraffin-embedded Human prostate tissue within the normal limits using anti-PCDH7 mouse monoclonal antibody. (Heat-induced epitope retrieval by 10mM citric buffer, pH6.0, 100°C for 10min, [TA505537])



Anti-PCDH7 mouse monoclonal antibody ([TA505537]) immunofluorescent staining of COS7 cells transiently transfected by pCMV6-ENTRY PCDH7 ([RC223033]).