

## Product datasheet for **TA505536M**

### CD272 (BTLA) Mouse Monoclonal Antibody [Clone ID: OTI4D6]

#### Product data:

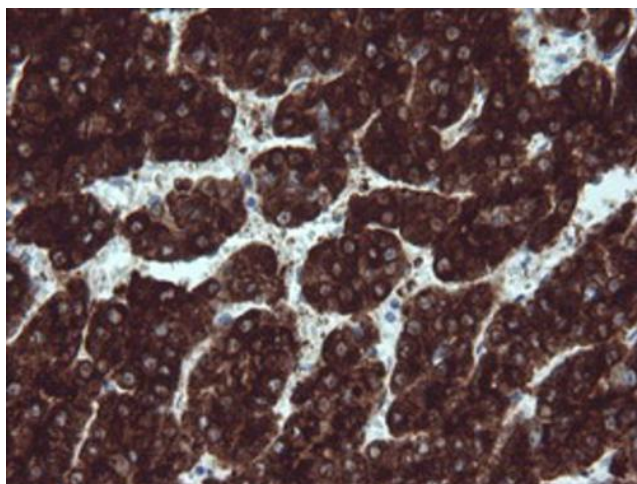
Product Type:	Primary Antibodies
Clone Name:	OTI4D6
Applications:	FC, IF, IHC, WB
Recommended Dilution:	WB 1:2000, IHC 1:150, IF 1:100
Reactivity:	Human
Host:	Mouse
Isotype:	IgG2b
Clonality:	Monoclonal
Immunogen:	Full length human recombinant protein of human BTLA(NP_861445) produced in HEK293T cell.
Formulation:	PBS (pH 7.3) containing 1% BSA, 50% glycerol and 0.02% sodium azide.
Concentration:	1 mg/ml
Purification:	Purified from mouse ascites fluids or tissue culture supernatant by affinity chromatography (protein A/G)
Conjugation:	Unconjugated
Storage:	Store at -20°C as received.
Stability:	Stable for 12 months from date of receipt.
Predicted Protein Size:	32.6 kDa
Gene Name:	B and T lymphocyte associated
Database Link:	<a href="#">NP_861445</a> <a href="#">Entrez Gene 151888 Human</a> <a href="#">Q7Z6A9</a>
Background:	This gene encodes a member of the immunoglobulin superfamily. The encoded protein contains a single immunoglobulin (Ig) domain and is a receptor that relays inhibitory signals to suppress the immune response. Alternative splicing results in multiple transcript variants. Polymorphisms in this gene have been associated with an increased risk of rheumatoid arthritis. [provided by RefSeq, Aug 2011]

[View online »](#)

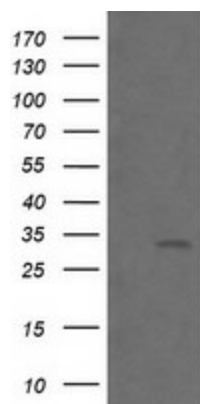
**Synonyms:** BTLA1; CD272

**Protein Families:** Transmembrane

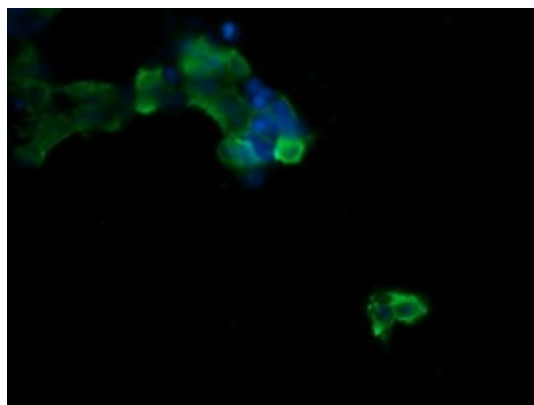
## Product images:



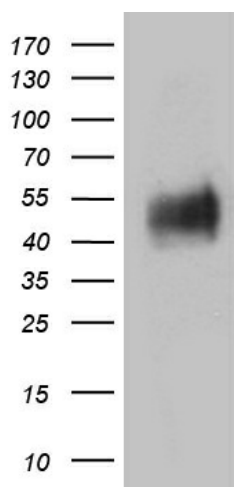
Immunohistochemical staining of paraffin-embedded Carcinoma of Human liver tissue using anti-BTLA mouse monoclonal antibody. Heat-induced epitope retrieval by EDTA solution buffer pH 8.0 at 120°C for 3 min.



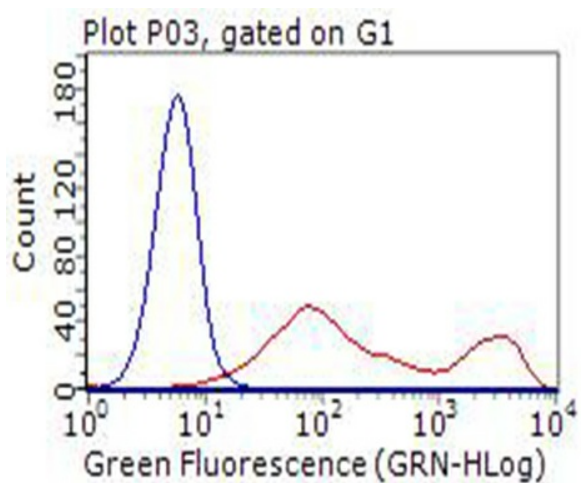
HEK293T cells were transfected with the pCMV6-ENTRY control (Left lane) or pCMV6-ENTRY BTLA ([RC219458], Right lane) cDNA for 48 hrs and lysed. Equivalent amounts of cell lysates (5 ug per lane) were separated by SDS-PAGE and immunoblotted with anti-BTLA. Positive lysates [LY403628] (100ug) and [LC403628] (20ug) can be purchased separately from OriGene.



Anti-BTLA mouse monoclonal antibody ([TA505536]) immunofluorescent staining of COS7 cells transiently transfected by pCMV6-ENTRY BTLA ([RC219458]).



Western blot analysis of extracts (35ug) from PBMCs by using anti-BTLA monoclonal antibody (1:500).



HEK293T cells transfected with either [RC219458] overexpress plasmid (Red) or empty vector control plasmid (Blue) were immunostained by anti-BTLA antibody ([TA505536]), and then analyzed by flow cytometry (1:500).