

## Product datasheet for **TA505527M**

### PSMA2 Mouse Monoclonal Antibody [Clone ID: OTI3D9]

#### Product data:

Product Type:	Primary Antibodies
Clone Name:	OTI3D9
Applications:	IHC, WB
Recommended Dilution:	WB 1:2000, IHC 1:500
Reactivity:	Human, Dog, Rat, Monkey, Mouse
Host:	Mouse
Isotype:	IgG2b
Clonality:	Monoclonal
Immunogen:	Human recombinant protein fragment corresponding to amino acids 50-234 of human PSMA2(NP_002778) produced in E.coli.
Formulation:	PBS (pH 7.3) containing 1% BSA, 50% glycerol and 0.02% sodium azide.
Concentration:	1 mg/ml
Purification:	Purified from mouse ascites fluids or tissue culture supernatant by affinity chromatography (protein A/G)
Conjugation:	Unconjugated
Storage:	Store at -20°C as received.
Stability:	Stable for 12 months from date of receipt.
Predicted Protein Size:	25.7 kDa
Gene Name:	proteasome 20S subunit alpha 2
Database Link:	<a href="#">NP_002778</a> <a href="#">Entrez Gene 19166 Mouse</a> <a href="#">Entrez Gene 29669 Rat</a> <a href="#">Entrez Gene 475870 Dog</a> <a href="#">Entrez Gene 701683 Monkey</a> <a href="#">Entrez Gene 5683 Human</a> <a href="#">P25787</a>



[View online »](#)

**Background:**

The proteasome is a multicatalytic proteinase complex with a highly ordered ring-shaped 20S core structure. The core structure is composed of 4 rings of 28 non-identical subunits; 2 rings are composed of 7 alpha subunits and 2 rings are composed of 7 beta subunits. Proteasomes are distributed throughout eukaryotic cells at a high concentration and cleave peptides in an ATP/ubiquitin-dependent process in a non-lysosomal pathway. An essential function of a modified proteasome, the immunoproteasome, is the processing of class I MHC peptides. This gene encodes a member of the peptidase T1A family, that is a 20S core alpha subunit. [provided by RefSeq, Jul 2008]

**Synonyms:**

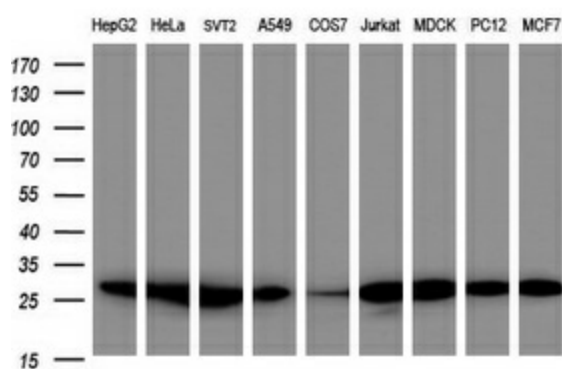
HC3; MU; PMSA2; PSC2

**Protein Families:**

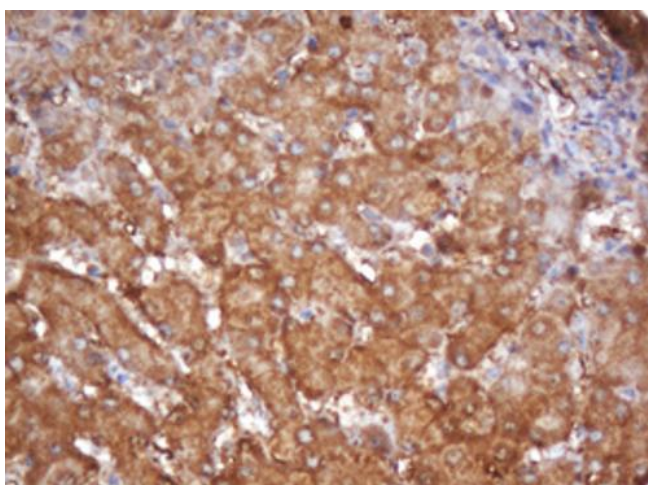
Druggable Genome, Protease

**Protein Pathways:**

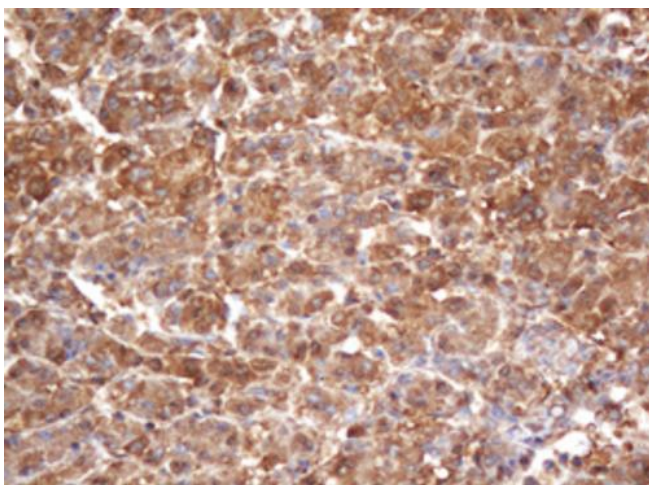
Proteasome

**Product images:**


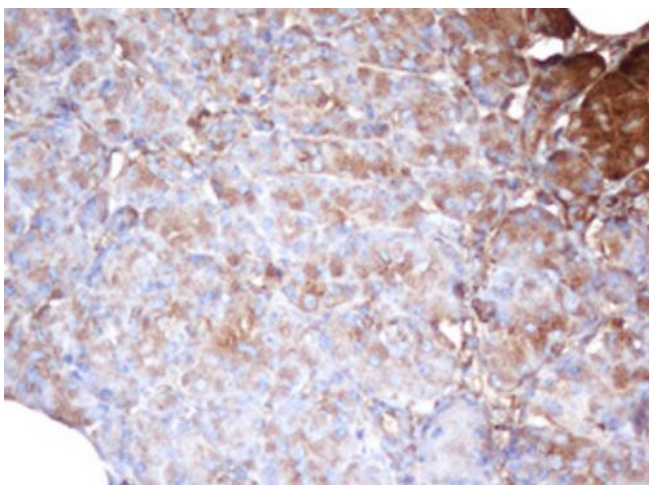
Western blot analysis of extracts (35ug) from 9 different cell lines by using anti-PSMA2 monoclonal antibody (HepG2: human; HeLa: human; SVT2: mouse; A549: human; COS7: monkey; Jurkat: human; MDCK: canine; PC12: rat; MCF7: human).



Immunohistochemical staining of paraffin-embedded Human liver tissue within the normal limits using anti-PSMA2 mouse monoclonal antibody. ([TA505527]; heat-induced epitope retrieval by 10mM citric buffer, pH6.0, 120°C for 3min). Heat-induced epitope retrieval by EDTA solution buffer pH 8.0 at 120°C for 3 min.



Immunohistochemical staining of paraffin-embedded Carcinoma of Human liver tissue using anti-PSMA2 mouse monoclonal antibody. ([TA505527]; heat-induced epitope retrieval by 10mM citric buffer, pH6.0, 120°C for 3min). Heat-induced epitope retrieval by EDTA solution buffer pH 8.0 at 120°C for 3 min.



Immunohistochemical staining of paraffin-embedded Human pancreas tissue within the normal limits using anti-PSMA2 mouse monoclonal antibody. ([TA505527]; heat-induced epitope retrieval by 10mM citric buffer, pH6.0, 120°C for 3min). Heat-induced epitope retrieval by EDTA solution buffer pH 8.0 at 120°C for 3 min.