

Product datasheet for **TA505519BM**

CD272 (BTLA) Mouse Monoclonal Antibody (HRP conjugated) [Clone ID: OTI1E5]

Product data:

Product Type:	Primary Antibodies
Clone Name:	OTI1E5
Applications:	WB
Recommended Dilution:	WB 1:2000
Reactivity:	Human
Host:	Mouse
Isotype:	IgG1
Clonality:	Monoclonal
Immunogen:	Full length human recombinant protein of human BTLA(NP_861445) produced in HEK293T cell.
Formulation:	PBS (pH 7.3) containing 1% BSA, 50% glycerol.
Concentration:	0.5 mg/ml
Purification:	Purified from mouse ascites fluids or tissue culture supernatant by affinity chromatography (protein A/G)
Conjugation:	HRP
Storage:	Store at -20°C as received.
Stability:	Stable for 12 months from date of receipt.
Predicted Protein Size:	32.6 kDa
Gene Name:	B and T lymphocyte associated
Database Link:	NP_861445 Entrez Gene 151888 Human Q7Z6A9
Background:	This gene encodes a member of the immunoglobulin superfamily. The encoded protein contains a single immunoglobulin (Ig) domain and is a receptor that relays inhibitory signals to suppress the immune response. Alternative splicing results in multiple transcript variants. Polymorphisms in this gene have been associated with an increased risk of rheumatoid arthritis. [provided by RefSeq, Aug 2011]

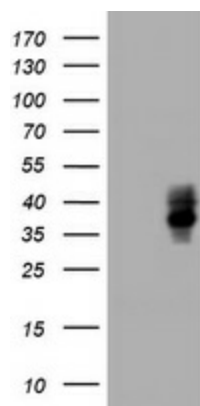


[View online »](#)

Synonyms: BTLA1; CD272

Protein Families: Transmembrane

Product images:



HEK293T cells were transfected with the pCMV6-ENTRY control (Left lane) or pCMV6-ENTRY BTLA ([RC219458], Right lane) cDNA for 48 hrs and lysed. Equivalent amounts of cell lysates (5 ug per lane) were separated by SDS-PAGE and immunoblotted with anti-BTLA. Positive lysates [LY403628] (100ug) and [LC403628] (20ug) can be purchased separately from OriGene.