

## Product datasheet for **TA505497S**

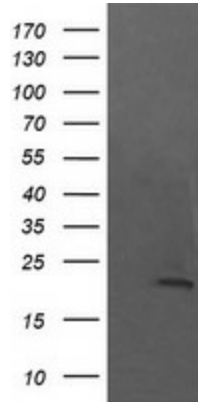
### **NKIRAS1 Mouse Monoclonal Antibody [Clone ID: OTI8B11]**

#### **Product data:**

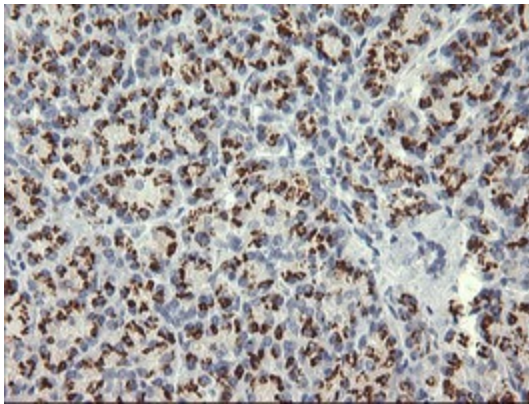
<b>Product Type:</b>	Primary Antibodies
<b>Clone Name:</b>	OTI8B11
<b>Applications:</b>	IF, IHC, WB
<b>Recommended Dilution:</b>	WB 1:1000, IHC 1:150, IF 1:100
<b>Reactivity:</b>	Human, Mouse, Rat
<b>Host:</b>	Mouse
<b>Isotype:</b>	IgG2a
<b>Clonality:</b>	Monoclonal
<b>Immunogen:</b>	Full length human recombinant protein of human NKIRAS1(NP_065078) produced in HEK293T cell.
<b>Formulation:</b>	PBS (pH 7.3) containing 1% BSA, 50% glycerol and 0.02% sodium azide.
<b>Concentration:</b>	1 mg/ml
<b>Purification:</b>	Purified from mouse ascites fluids or tissue culture supernatant by affinity chromatography (protein A/G)
<b>Conjugation:</b>	Unconjugated
<b>Storage:</b>	Store at -20°C as received.
<b>Stability:</b>	Stable for 12 months from date of receipt.
<b>Predicted Protein Size:</b>	21.5 kDa
<b>Gene Name:</b>	NFKB inhibitor interacting Ras like 1
<b>Database Link:</b>	<a href="#">NP_065078</a> <a href="#">Entrez Gene 69721 Mouse</a> <a href="#">Entrez Gene 305751 Rat</a> <a href="#">Entrez Gene 28512 Human</a> <a href="#">Q9NYS0</a>
<b>Synonyms:</b>	kappaB-Ras1; KBRAS1



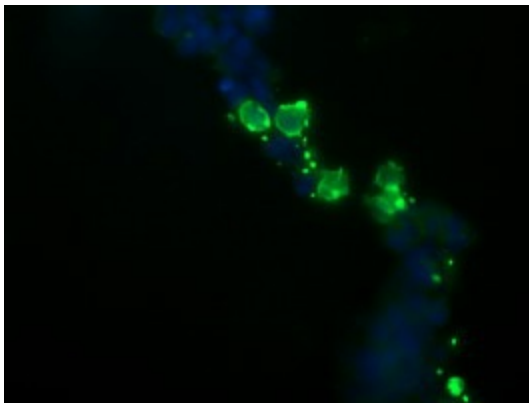
[View online »](#)

**Product images:**

HEK293T cells were transfected with the pCMV6-ENTRY control (Left lane) or pCMV6-ENTRY NKIRAS1 ([RC204248], Right lane) cDNA for 48 hrs and lysed. Equivalent amounts of cell lysates (5 ug per lane) were separated by SDS-PAGE and immunoblotted with anti-NKIRAS1. Positive lysates [LY412541] (100ug) and [LC412541] (20ug) can be purchased separately from OriGene.



Immunohistochemical staining of paraffin-embedded Human pancreas tissue within the normal limits using anti-NKIRAS1 mouse monoclonal antibody. (Heat-induced epitope retrieval by 10mM citric buffer, pH6.0, 120°C for 3min, [TA505497])



Anti-NKIRAS1 mouse monoclonal antibody ([TA505497]) immunofluorescent staining of COS7 cells transiently transfected by pCMV6-ENTRY NKIRAS1 ([RC204248]).