

Product datasheet for **TA505496AM**

Calcipressin 3 (RCAN3) Mouse Monoclonal Antibody (Biotin conjugated) [Clone ID: OTI1B2]

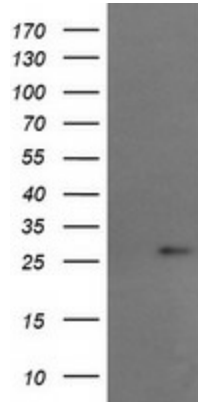
Product data:

Product Type:	Primary Antibodies
Clone Name:	OTI1B2
Applications:	IF, WB
Recommended Dilution:	WB 1:2000, IF 1:100
Reactivity:	Human, Mouse, Rat
Host:	Mouse
Isotype:	IgG2a
Clonality:	Monoclonal
Immunogen:	Full length human recombinant protein of human RCAN3(NP_038469) produced in E.coli.
Formulation:	PBS (pH 7.3) containing 1% BSA, 50% glycerol and 0.02% sodium azide.
Concentration:	0.5 mg/ml
Purification:	Purified from mouse ascites fluids or tissue culture supernatant by affinity chromatography (protein A/G)
Conjugation:	Biotin
Storage:	Store at -20°C as received.
Stability:	Stable for 12 months from date of receipt.
Predicted Protein Size:	27.3 kDa
Gene Name:	RCAN family member 3
Database Link:	NP_038469 Entrez Gene 53902 Mouse Entrez Gene 362627 Rat Entrez Gene 11123 Human Q9UKA8
Synonyms:	DSCR1L2; hRCN3; MCIP3; RCN3

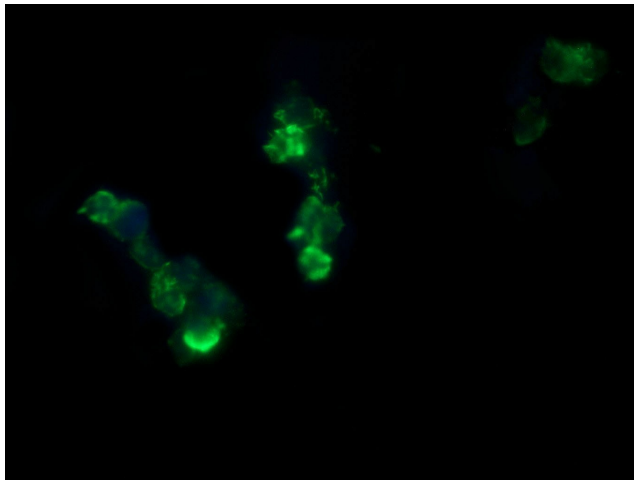


[View online »](#)

Product images:



HEK293T cells were transfected with the pCMV6-ENTRY control (Cat# [PS100001], Left lane) or pCMV6-ENTRY RCAN3 (Cat# [RC207755], Right lane) cDNA for 48 hrs and lysed. Equivalent amounts of cell lysates (5 ug per lane) were separated by SDS-PAGE and immunoblotted with anti-RCAN3 (Cat# [TA505496]). Positive lysates [LY415541] (100ug) and [LC415541] (20ug) can be purchased separately from OriGene.



Anti-RCAN3 mouse monoclonal antibody ([TA505496]) immunofluorescent staining of COS7 cells transiently transfected by pCMV6-ENTRY RCAN3 ([RC207755]).