

Product datasheet for **TA505467**

RHOJ Mouse Monoclonal Antibody [Clone ID: OTI2C9]

Product data:

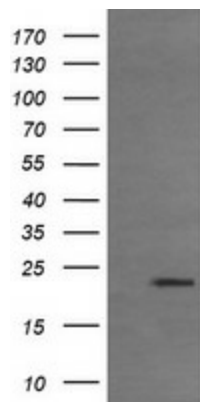
Product Type:	Primary Antibodies
Clone Name:	OTI2C9
Applications:	IF, IHC, WB
Recommended Dilution:	WB 1:2000, IHC 1:150, IF 1:100
Reactivity:	Human, Mouse, Rat
Host:	Mouse
Isotype:	IgG2a
Clonality:	Monoclonal
Immunogen:	Full length human recombinant protein of human RHOJ(NP_065714) produced in HEK293T cell.
Formulation:	PBS (pH 7.3) containing 1% BSA, 50% glycerol and 0.02% sodium azide.
Concentration:	1 mg/ml
Purification:	Purified from mouse ascites fluids or tissue culture supernatant by affinity chromatography (protein A/G)
Conjugation:	Unconjugated
Storage:	Store at -20°C as received.
Stability:	Stable for 12 months from date of receipt.
Predicted Protein Size:	23.6 kDa
Gene Name:	ras homolog family member J
Database Link:	NP_065714 Entrez Gene 80837 Mouse Entrez Gene 299145 Rat Entrez Gene 57381 Human Q9H4E5
Background:	This gene encodes one of the many small GTP-binding proteins in the Rho family shown to be associated with focal adhesions in endothelial cells (PMID: 21148427, 22103495). The encoded protein is activated by vascular endothelial growth factor and may regulate angiogenesis. [provided by RefSeq, Dec 2011]
Synonyms:	ARHJ; RASL7B; TC10B; TCL



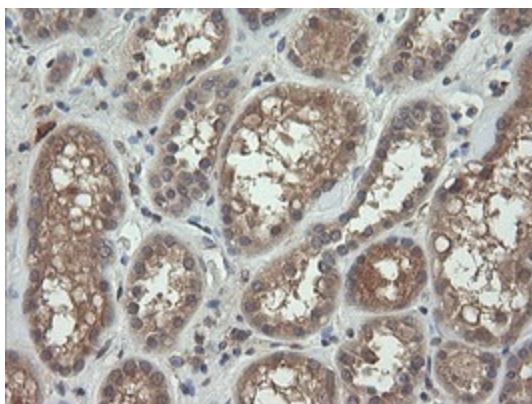
[View online »](#)

Protein Families: Druggable Genome

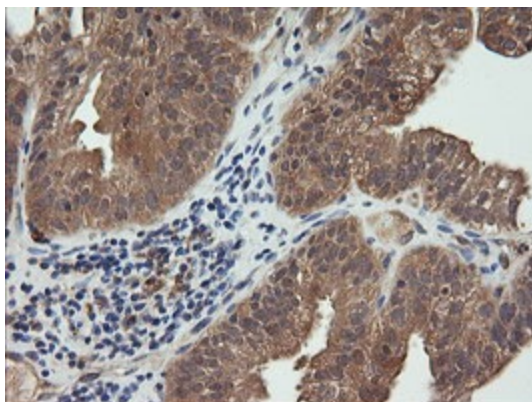
Product images:



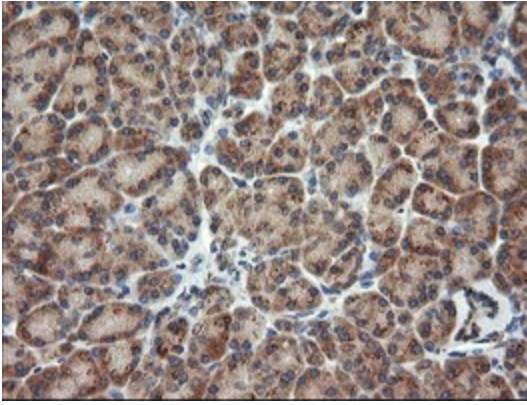
HEK293T cells were transfected with the pCMV6-ENTRY control (Left lane) or pCMV6-ENTRY RHOJ ([RC209395], Right lane) cDNA for 48 hrs and lysed. Equivalent amounts of cell lysates (5 ug per lane) were separated by SDS-PAGE and immunoblotted with anti-RHOJ. Positive lysates [LY412401] (100ug) and [LC412401] (20ug) can be purchased separately from OriGene.



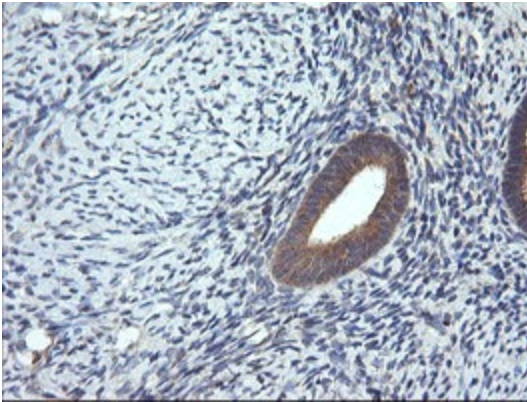
Immunohistochemical staining of paraffin-embedded Human Kidney tissue within the normal limits using anti-RHOJ mouse monoclonal antibody. (Heat-induced epitope retrieval by 10mM citric buffer, pH6.0, 120°C for 3min, TA505467)



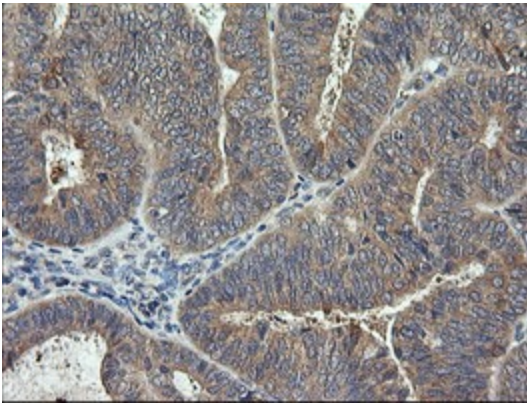
Immunohistochemical staining of paraffin-embedded Adenocarcinoma of Human ovary tissue using anti-RHOJ mouse monoclonal antibody. (Heat-induced epitope retrieval by 10mM citric buffer, pH6.0, 120°C for 3min, TA505467)



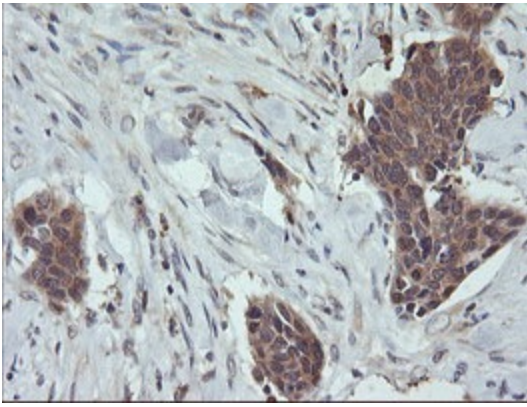
Immunohistochemical staining of paraffin-embedded Human pancreas tissue within the normal limits using anti-RHOJ mouse monoclonal antibody. (Heat-induced epitope retrieval by 10mM citric buffer, pH6.0, 120°C for 3min, TA505467)



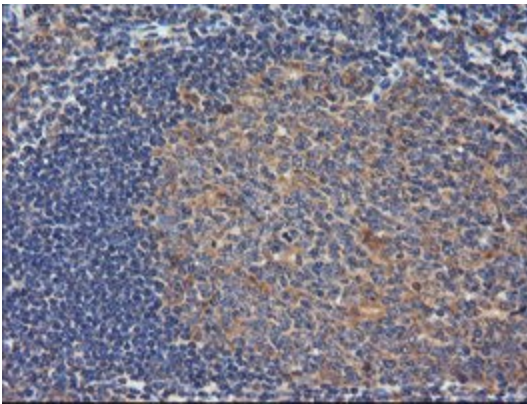
Immunohistochemical staining of paraffin-embedded Human endometrium tissue within the normal limits using anti-RHOJ mouse monoclonal antibody. (Heat-induced epitope retrieval by 10mM citric buffer, pH6.0, 120°C for 3min, TA505467)



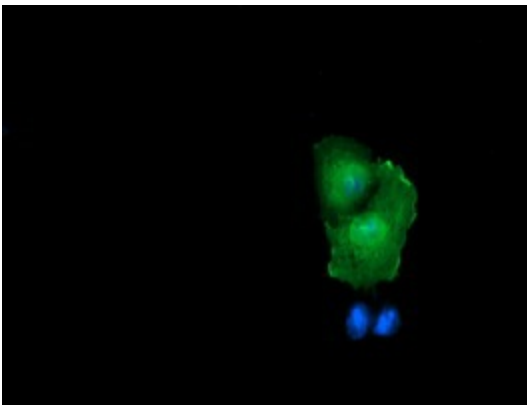
Immunohistochemical staining of paraffin-embedded Adenocarcinoma of Human endometrium tissue using anti-RHOJ mouse monoclonal antibody. (Heat-induced epitope retrieval by 10mM citric buffer, pH6.0, 120°C for 3min, TA505467)



Immunohistochemical staining of paraffin-embedded Carcinoma of Human bladder tissue using anti-RHOJ mouse monoclonal antibody. (Heat-induced epitope retrieval by 10mM citric buffer, pH6.0, 120°C for 3min, TA505467)



Immunohistochemical staining of paraffin-embedded Human tonsil within the normal limits using anti-RHOJ mouse monoclonal antibody. (Heat-induced epitope retrieval by 10mM citric buffer, pH6.0, 120°C for 3min, TA505467)



Anti-RHOJ mouse monoclonal antibody (TA505467) immunofluorescent staining of COS7 cells transiently transfected by pCMV6-ENTRY RHOJ ([RC209395]).