

Product datasheet for **TA505463AM**

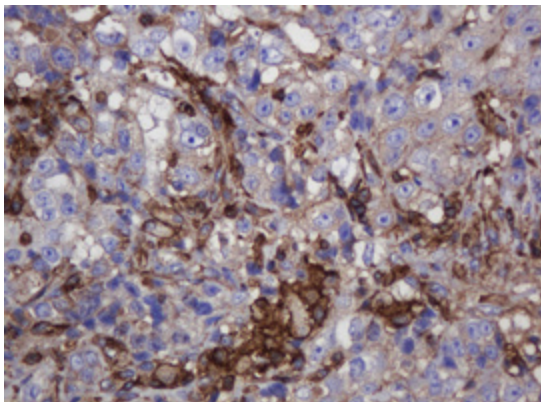
FNDC4 Mouse Monoclonal Antibody (Biotin conjugated) [Clone ID: OTI1B7]

Product data:

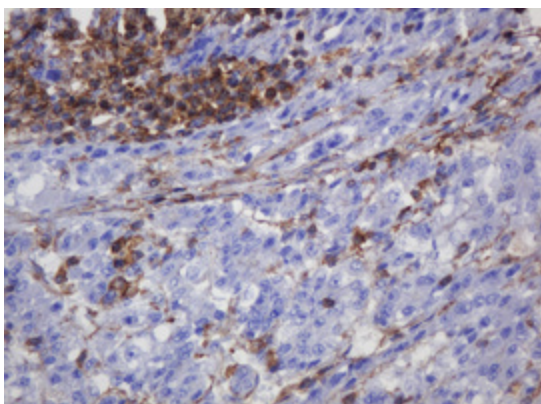
Product Type:	Primary Antibodies
Clone Name:	OTI1B7
Applications:	IHC
Recommended Dilution:	IHC 1:150
Reactivity:	Human, Mouse
Host:	Mouse
Isotype:	IgG1
Clonality:	Monoclonal
Immunogen:	Full length human recombinant protein of human FNDC4(NP_073734) produced in HEK293T cell.
Formulation:	PBS (pH 7.3) containing 1% BSA, 50% glycerol and 0.02% sodium azide.
Concentration:	0.5 mg/ml
Purification:	Purified from mouse ascites fluids or tissue culture supernatant by affinity chromatography (protein A/G)
Conjugation:	Biotin
Storage:	Store at -20°C as received.
Stability:	Stable for 12 months from date of receipt.
Predicted Protein Size:	25 kDa
Gene Name:	fibronectin type III domain containing 4
Database Link:	NP_073734 Entrez Gene 64339 Mouse Entrez Gene 64838 Human Q9H6D8
Synonyms:	FRCP1
Protein Families:	Transmembrane



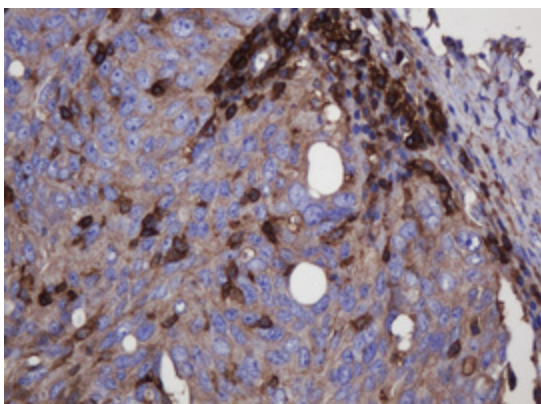
[View online »](#)

Product images:

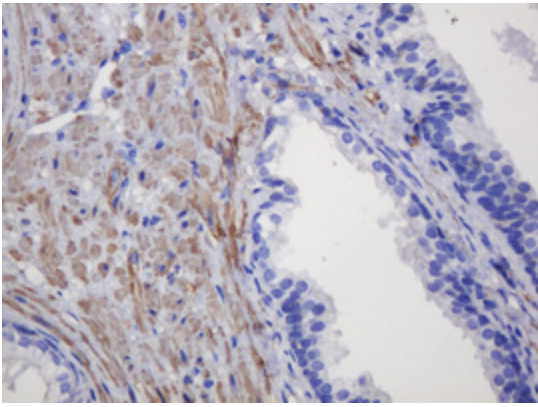
Immunohistochemical staining of paraffin-embedded Adenocarcinoma of Human colon tissue using anti-FNDC4 mouse monoclonal antibody. (Heat-induced epitope retrieval by 10mM citric buffer, pH6.0, 120°C for 3min, [TA505463])



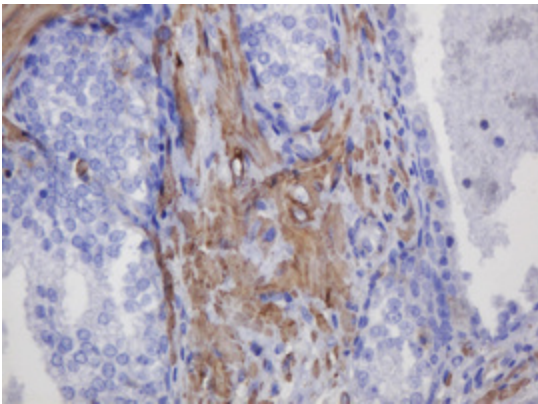
Immunohistochemical staining of paraffin-embedded Carcinoma of Human liver tissue using anti-FNDC4 mouse monoclonal antibody. (Heat-induced epitope retrieval by 10mM citric buffer, pH6.0, 120°C for 3min, [TA505463])



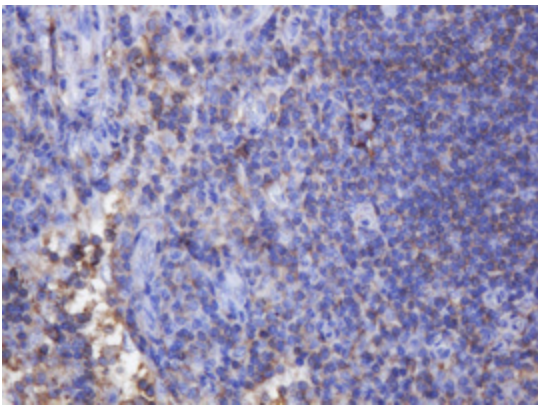
Immunohistochemical staining of paraffin-embedded Adenocarcinoma of Human ovary tissue using anti-FNDC4 mouse monoclonal antibody. (Heat-induced epitope retrieval by 10mM citric buffer, pH6.0, 120°C for 3min, [TA505463])



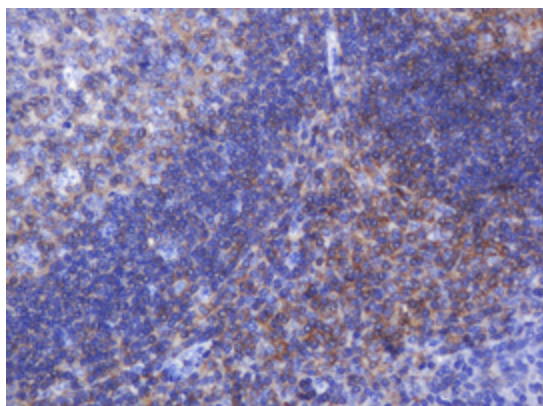
Immunohistochemical staining of paraffin-embedded Human prostate tissue within the normal limits using anti-FNDC4 mouse monoclonal antibody. (Heat-induced epitope retrieval by 10mM citric buffer, pH6.0, 120°C for 3min, [TA505463])



Immunohistochemical staining of paraffin-embedded Carcinoma of Human prostate tissue using anti-FNDC4 mouse monoclonal antibody. (Heat-induced epitope retrieval by 10mM citric buffer, pH6.0, 120°C for 3min, [TA505463])



Immunohistochemical staining of paraffin-embedded Human lymph node tissue within the normal limits using anti-FNDC4 mouse monoclonal antibody. (Heat-induced epitope retrieval by 10mM citric buffer, pH6.0, 120°C for 3min, [TA505463])



Immunohistochemical staining of paraffin-embedded Human tonsil within the normal limits using anti-FNDC4 mouse monoclonal antibody. (Heat-induced epitope retrieval by 10mM citric buffer, pH6.0, 120°C for 3min, [TA505463])