

## Product datasheet for **TA505452**

### PCDH7 Mouse Monoclonal Antibody [Clone ID: OTI2G6]

#### Product data:

Product Type:	Primary Antibodies
Clone Name:	OTI2G6
Applications:	IF, IHC, WB
Recommended Dilution:	WB 1:200~2000, IHC 1:150, IF 1:100
Reactivity:	Human, Mouse, Rat
Host:	Mouse
Isotype:	IgG1
Clonality:	Monoclonal
Immunogen:	Full length human recombinant protein of human PCDH7(NP_115833) produced in HKE293T cell.
Formulation:	PBS (pH 7.3) containing 1% BSA, 50% glycerol and 0.02% sodium azide.
Concentration:	1 mg/ml
Purification:	Purified from mouse ascites fluids or tissue culture supernatant by affinity chromatography (protein A/G)
Conjugation:	Unconjugated
Storage:	Store at -20°C as received.
Stability:	Stable for 12 months from date of receipt.
Predicted Protein Size:	132.4 kDa
Gene Name:	protocadherin 7
Database Link:	<a href="#">NP_115833</a> <a href="#">Entrez Gene 54216 Mouse</a> <a href="#">Entrez Gene 5099 Human</a> <a href="#">O60245</a>
Background:	This gene belongs to the protocadherin gene family, a subfamily of the cadherin superfamily. The gene encodes a protein with an extracellular domain containing 7 cadherin repeats. The gene product is an integral membrane protein that is thought to function in cell-cell recognition and adhesion. Alternative splicing yields isoforms with unique cytoplasmic tails. [provided by RefSeq, Jul 2008]



[View online »](#)

**Synonyms:** BH-Pcdh; BHPCDH; PPP1R120

**Protein Families:** Druggable Genome, Transmembrane

**Product images:**

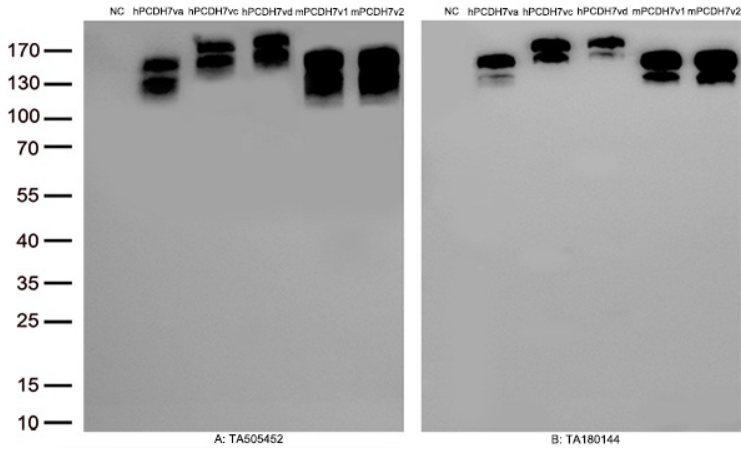
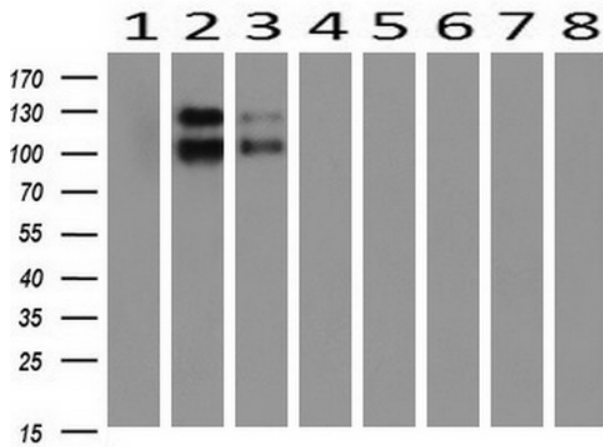
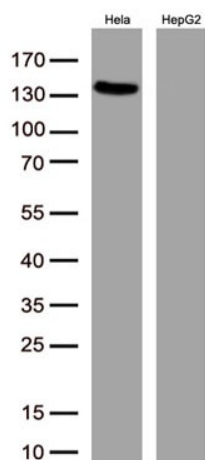


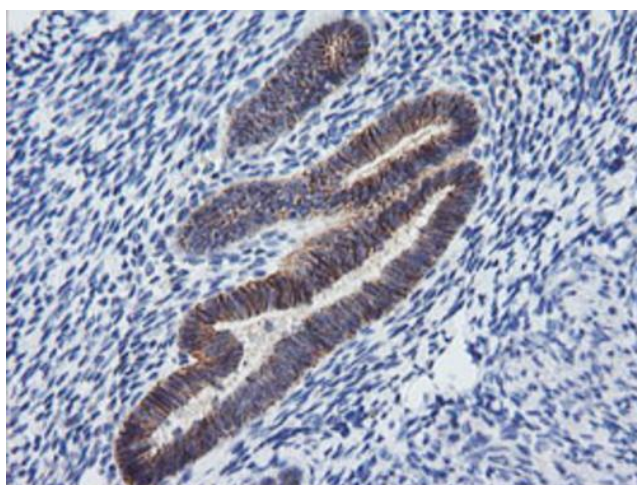
Figure A, Western blot analysis of overexpressed lysates(15ug per lane) from HEK293T cells transfected with empty plasmid ([PS100001], NC), human PCDH7 plasmid ([RC213200], hPCDH7 va), human PCDH7 plasmid ([RC223033], hPCDH7 vc), human PCDH7 plasmid ([RC230683], hPCDH7 vd), mouse PCDH7 plasmid ([MR214196], mPCDH7 v1), mouse PCDH7 plasmid ([MR214198], mPCDH7 v2) using anti-PCDH7 antibody TA505452 (1:500). Figure B, Western blot analysis of the same samples as figure A with anti-DDK antibody ([TA180144], 1:1000)



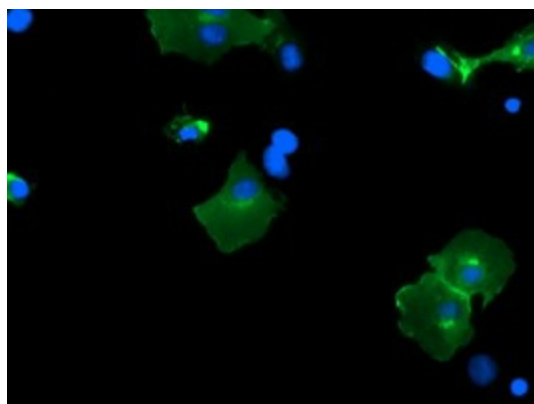
Western blot analysis of extracts (10ug) from 8 Human tissue by using anti-PCDH7 monoclonal antibody at 1:200 (1: Testis; 2: Uterus; 3: Breast; 4: Brain; 5: Liver; 6: Ovary; 7: Thyroid gland; 8: Colon).



Western blot analysis of extracts (50ug per lane) from 3 cell lines lysates by using anti-PCDH7 monoclonal antibody(TA505452, 1:500)



Immunohistochemical staining of paraffin-embedded Human endometrium tissue within the normal limits using anti-PCDH7 mouse monoclonal antibody. Heat-induced epitope retrieval by EDTA solution buffer pH 8.0 at 120°C for 3 min.



Anti-PCDH7 mouse monoclonal antibody (TA505452) immunofluorescent staining of COS7 cells transiently transfected by pCMV6-ENTRY PCDH7 ([RC223033]).