

## Product datasheet for **TA505449AM**

### COG6 Mouse Monoclonal Antibody (Biotin conjugated) [Clone ID: OTI4G4]

#### Product data:

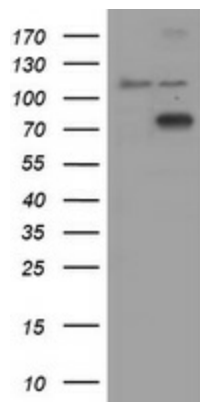
Product Type:	Primary Antibodies
Clone Name:	OTI4G4
Applications:	IHC, WB
Recommended Dilution:	WB 1:2000, IHC 1:150
Reactivity:	Human, Mouse, Rat
Host:	Mouse
Isotype:	IgG1
Clonality:	Monoclonal
Immunogen:	Full length human recombinant protein of human COG6 (NP_065802) produced in HEK293T cell.
Formulation:	PBS (pH 7.3) containing 1% BSA, 50% glycerol and 0.02% sodium azide.
Concentration:	0.5 mg/ml
Purification:	Purified from mouse ascites fluids or tissue culture supernatant by affinity chromatography (protein A/G)
Conjugation:	Biotin
Storage:	Store at -20°C as received.
Stability:	Stable for 12 months from date of receipt.
Predicted Protein Size:	73.1 kDa
Gene Name:	component of oligomeric golgi complex 6
Database Link:	<a href="#">NP_065802</a> <a href="#">Entrez Gene 57511 Human</a> <a href="#">Q9Y2V7</a>
Background:	This gene encodes a subunit of the conserved oligomeric Golgi complex that is required for maintaining normal structure and activity of the Golgi apparatus. The encoded protein is organized with conserved oligomeric Golgi complex components 5, 7 and 8 into a sub-complex referred to as lobe B. Alternative splicing results in multiple transcript variants. [provided by RefSeq, Feb 2009]



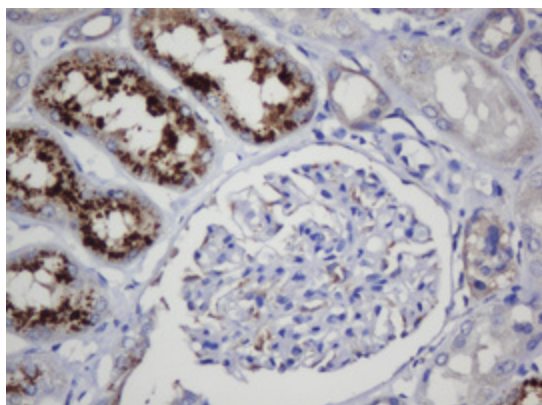
[View online »](#)

Synonyms: CDG2L; COD2; SHNS

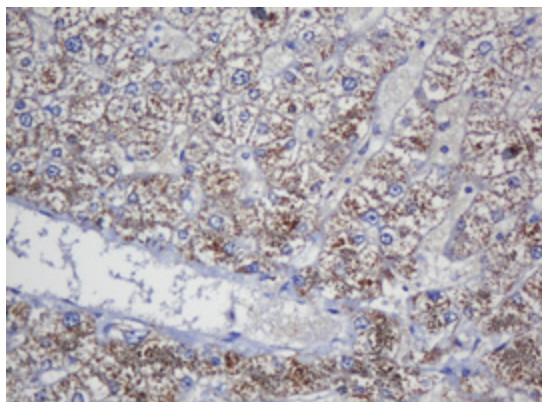
### Product images:



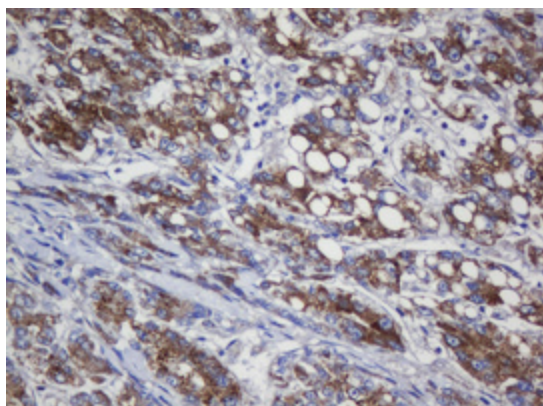
HEK293T cells were transfected with the pCMV6-ENTRY control (Left lane) or pCMV6-ENTRY COG6 [RC207981], Right lane) cDNA for 48 hrs and lysed. Equivalent amounts of cell lysates (5 ug per lane) were separated by SDS-PAGE and immunoblotted with anti-COG6. Positive lysates [LY412375] (100ug) and [LC412375] (20ug) can be purchased separately from OriGene.



Immunohistochemical staining of paraffin-embedded Human Kidney tissue within the normal limits using anti-COG6 mouse monoclonal antibody. (Heat-induced epitope retrieval by 10mM citric buffer, pH6.0, 120°C for 3min, [TA505449])



Immunohistochemical staining of paraffin-embedded Human liver tissue within the normal limits using anti-COG6 mouse monoclonal antibody. (Heat-induced epitope retrieval by 10mM citric buffer, pH6.0, 120°C for 3min, [TA505449])



Immunohistochemical staining of paraffin-embedded Carcinoma of Human liver tissue using anti-COG6 mouse monoclonal antibody. (Heat-induced epitope retrieval by 10mM citric buffer, pH6.0, 120°C for 3min, [TA505449])