

Product datasheet for **TA505442BM**

GLB1 Mouse Monoclonal Antibody (HRP conjugated) [Clone ID: OTI1E10]

Product data:

Product Type:	Primary Antibodies
Clone Name:	OTI1E10
Applications:	IHC, WB
Recommended Dilution:	WB 1:500, IHC 1:100
Reactivity:	Human
Host:	Mouse
Isotype:	IgG2a
Clonality:	Monoclonal
Immunogen:	Full length human recombinant protein of human GLB1(NP_001073279) produced in HEK293T cell.
Formulation:	PBS (pH 7.3) containing 1% BSA, 50% glycerol.
Concentration:	0.5 mg/ml
Purification:	Purified from mouse ascites fluids or tissue culture supernatant by affinity chromatography (protein A/G)
Conjugation:	HRP
Storage:	Store at -20°C as received.
Stability:	Stable for 12 months from date of receipt.
Predicted Protein Size:	72.6 kDa
Gene Name:	galactosidase beta 1
Database Link:	NP_001073279 Entrez Gene 2720 Human P16278
Background:	This gene encodes beta-galactosidase-1, a lysosomal enzyme that hydrolyzes the terminal beta-galactose from ganglioside substrates and other glycoconjugates. Defects in this gene are the cause of GM1-gangliosidosis and Morquio B syndrome. Multiple transcript variants encoding different isoforms have been found for this gene. [provided by RefSeq, Oct 2008]
Synonyms:	EBP; ELNR1; MPS4B

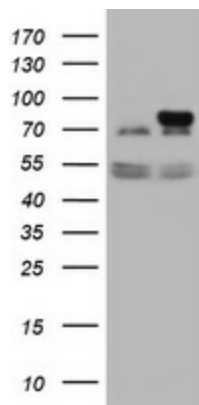


[View online »](#)

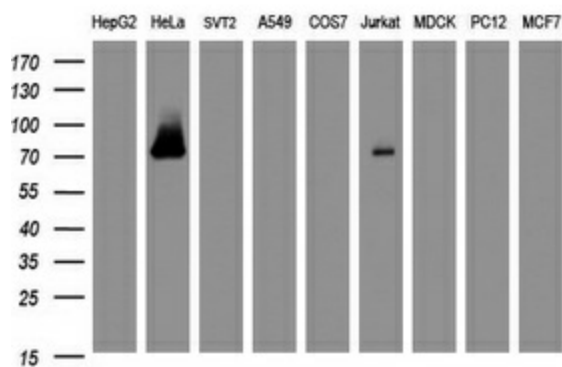
Protein Families: Druggable Genome

Protein Pathways: Galactose metabolism, Glycosaminoglycan degradation, Glycosphingolipid biosynthesis - ganglio series, Lysosome, Metabolic pathways, Other glycan degradation, Sphingolipid metabolism

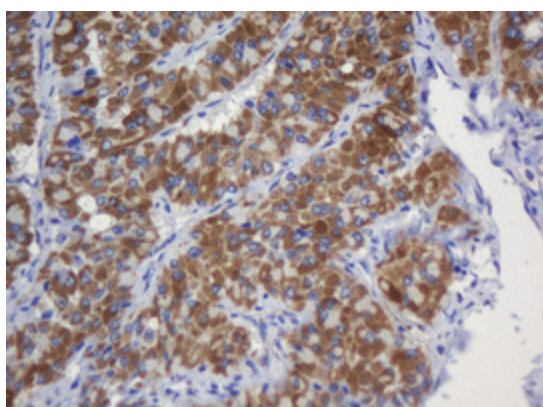
Product images:



HEK293T cells were transfected with the pCMV6-ENTRY control (Left lane) or pCMV6-ENTRY GLB1 ([RC200721], Right lane) cDNA for 48 hrs and lysed. Equivalent amounts of cell lysates (5 ug per lane) were separated by SDS-PAGE and immunoblotted with anti-GLB1.



Western blot analysis of extracts (35ug) from 9 different cell lines by using anti-GLB1 monoclonal antibody (HepG2: human; HeLa: human; SVT2: mouse; A549: human; COS7: monkey; Jurkat: human; MDCK: canine; PC12: rat; MCF7: human).



Immunohistochemical staining of paraffin-embedded Carcinoma of Human thyroid tissue using anti-GLB1 mouse monoclonal antibody. (Heat-induced epitope retrieval by 10mM citric buffer, pH6.0, 120°C for 3min, [TA505442])