

Product datasheet for **TA505437M**

GADD45G Mouse Monoclonal Antibody [Clone ID: OTI2F12]

Product data:

Product Type:	Primary Antibodies
Clone Name:	OTI2F12
Applications:	IF, IHC, IP, WB
Recommended Dilution:	WB 1:4000, IHC 1:150, IF 1:100
Reactivity:	Human, Mouse, Rat
Host:	Mouse
Isotype:	IgG1
Clonality:	Monoclonal
Immunogen:	Full length human recombinant protein of human GADD45G(NP_006696) produced in HEK293T cell.
Formulation:	PBS (pH 7.3) containing 1% BSA, 50% glycerol and 0.02% sodium azide.
Concentration:	1 mg/ml
Purification:	Purified from mouse ascites fluids or tissue culture supernatant by affinity chromatography (protein A/G)
Conjugation:	Unconjugated
Storage:	Store at -20°C as received.
Stability:	Stable for 12 months from date of receipt.
Predicted Protein Size:	16.9 kDa
Gene Name:	growth arrest and DNA damage inducible gamma
Database Link:	NP_006696 Entrez Gene 23882 Mouse Entrez Gene 291005 Rat Entrez Gene 10912 Human O95257
Background:	This gene is a member of a group of genes whose transcript levels are increased following stressful growth arrest conditions and treatment with DNA-damaging agents. The protein encoded by this gene responds to environmental stresses by mediating activation of the p38/JNK pathway via MTK1/MEKK4 kinase. The GADD45G is highly expressed in placenta. [provided by RefSeq, Jul 2008]


[View online »](#)

Synonyms: CR6; DDIT2; GADD45gamma; GRP17

Protein Pathways: Cell cycle, MAPK signaling pathway, p53 signaling pathway

Product images:

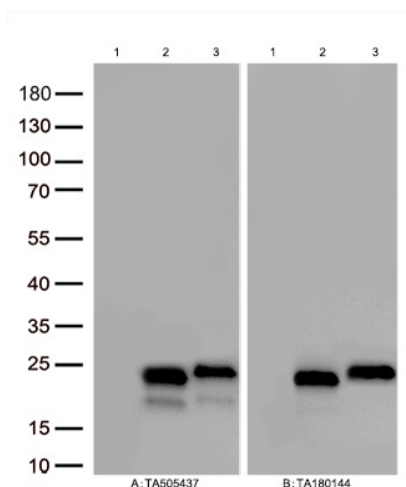


Figure A, Western blot analysis of overexpressed lysates(15ug per lane) from HEK293T cells transfected with empty plasmid ([PS100001], lane 1) , human GADD45G plasmid ([RC201364], lane 2), mouse GADD45G plasmid ([MR201228], lane 3) using anti-GADD45G antibody [TA505437] (1:500). Figure B, Western blot analysis of the same samples as figure A with anti-DDK antibody ([TA180144], 1:1000)

Detroit 562

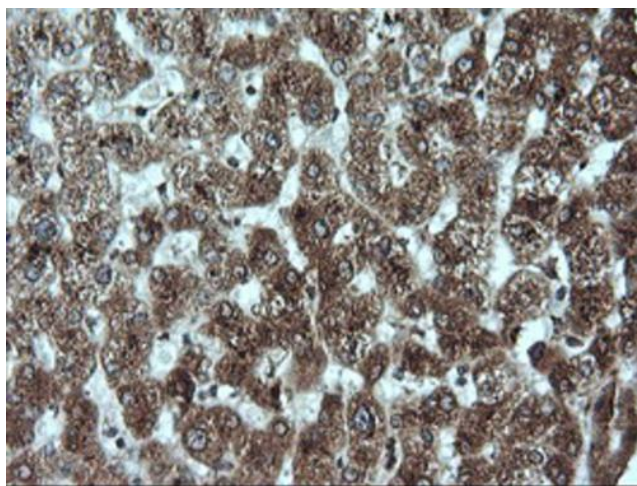


Hone-1

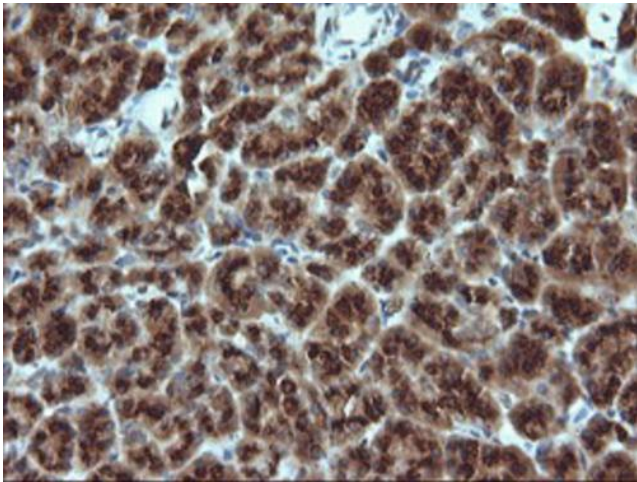


WB:Gadd45 γ

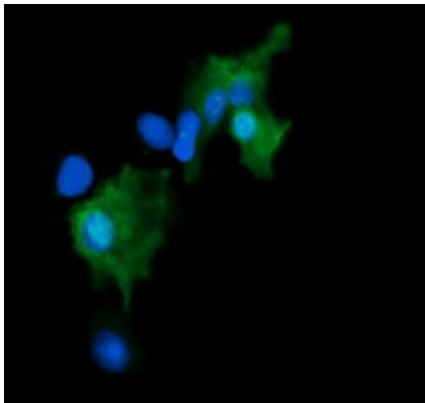
Figure from citation: Western Blot of GADD45G protein level by using anti-GADD45G antibody in human NPC cell lines. [View Citation](#)



Immunohistochemical staining of paraffin-embedded Human liver tissue within the normal limits using anti-GADD45G mouse monoclonal antibody. Heat-induced epitope retrieval by EDTA solution buffer pH 8.0 at 120°C for 3 min.



Immunohistochemical staining of paraffin-embedded Human pancreas tissue within the normal limits using anti-GADD45G mouse monoclonal antibody. Heat-induced epitope retrieval by EDTA solution buffer pH 8.0 at 120°C for 3 min.



Anti-GADD45G mouse monoclonal antibody ([TA505437]) immunofluorescent staining of COS7 cells transiently transfected by pCMV6-ENTRY GADD45G ([RC201364]).

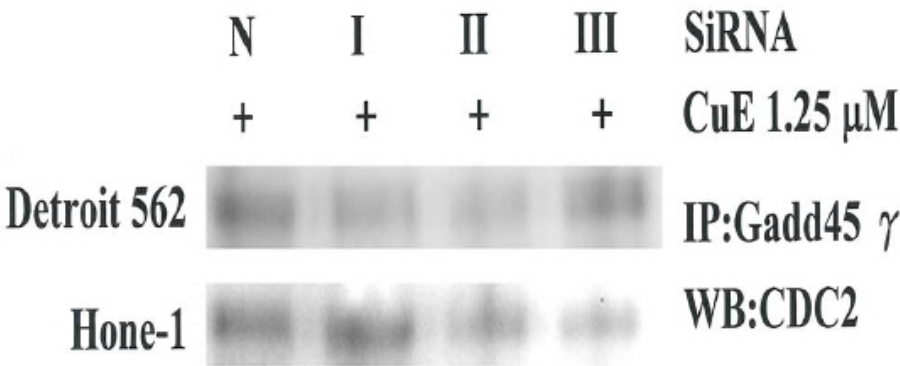


Figure from citation: Immunoprecipitation of GADD45G protein level by using anti-GADD45G antibody in human NPC cell lines. [View Citation](#)

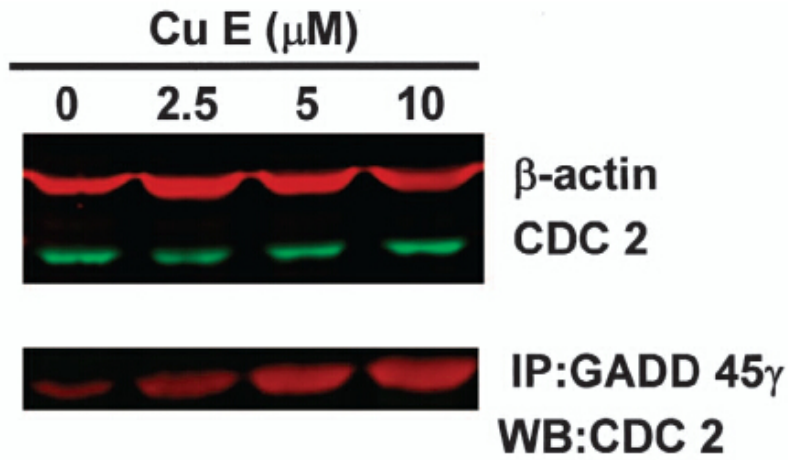


Figure from citation: Immunoprecipitation of GADD45G protein level by using anti-GADD45G antibody in human GBM8401 cells. [View Citation](#)

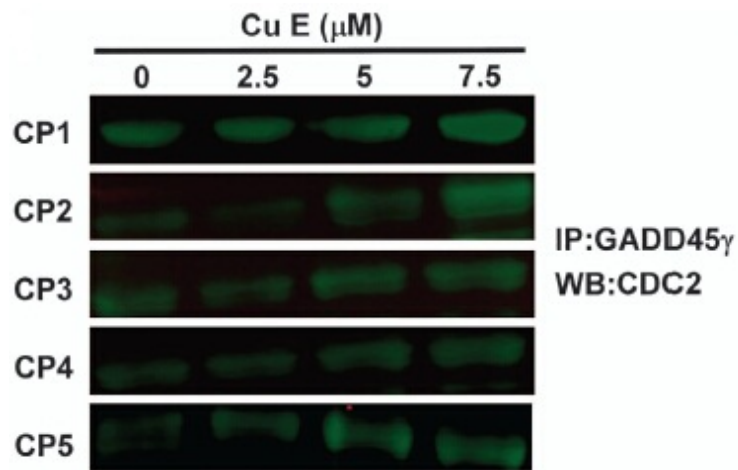


Figure from citation: Immunoprecipitation of GADD45G protein level by using anti-GADD45G antibody in human CRC cells. [View Citation](#)