

## Product datasheet for **TA505437AM**

### **GADD45G Mouse Monoclonal Antibody (Biotin conjugated) [Clone ID: OTI2F12]**

#### **Product data:**

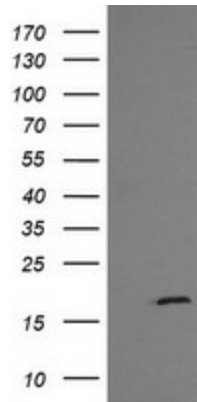
<b>Product Type:</b>	Primary Antibodies
<b>Clone Name:</b>	OTI2F12
<b>Applications:</b>	IF, IHC, IP, WB
<b>Recommended Dilution:</b>	WB 1:4000, IHC 1:150, IF 1:100
<b>Reactivity:</b>	Human, Mouse, Rat
<b>Host:</b>	Mouse
<b>Isotype:</b>	IgG1
<b>Clonality:</b>	Monoclonal
<b>Immunogen:</b>	Full length human recombinant protein of human GADD45G(NP_006696) produced in HEK293T cell.
<b>Concentration:</b>	0.5 mg/ml
<b>Purification:</b>	Purified from mouse ascites fluids or tissue culture supernatant by affinity chromatography (protein A/G)
<b>Conjugation:</b>	Biotin
<b>Storage:</b>	Store at -20°C as received.
<b>Stability:</b>	Stable for 12 months from date of receipt.
<b>Predicted Protein Size:</b>	16.9 kDa
<b>Gene Name:</b>	growth arrest and DNA damage inducible gamma
<b>Database Link:</b>	<a href="#">NP_006696</a> <a href="#">Entrez Gene 23882 Mouse</a> <a href="#">Entrez Gene 291005 Rat</a> <a href="#">Entrez Gene 10912 Human</a> <a href="#">O95257</a>
<b>Background:</b>	This gene is a member of a group of genes whose transcript levels are increased following stressful growth arrest conditions and treatment with DNA-damaging agents. The protein encoded by this gene responds to environmental stresses by mediating activation of the p38/JNK pathway via MTK1/MEKK4 kinase. The GADD45G is highly expressed in placenta. [provided by RefSeq, Jul 2008]
<b>Synonyms:</b>	CR6; DDIT2; GADD45gamma; GRP17



[View online »](#)

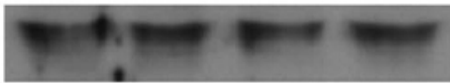
Protein Pathways: Cell cycle, MAPK signaling pathway, p53 signaling pathway

**Product images:**



HEK293T cells were transfected with the pCMV6-ENTRY control (Cat# [PS100001], Left lane) or pCMV6-ENTRY GADD45G (Cat# [RC201364], Right lane) cDNA for 48 hrs and lysed. Equivalent amounts of cell lysates (5 ug per lane) were separated by SDS-PAGE and immunoblotted with anti-GADD45G(Cat# [TA505437]). Positive lysates [LY416476] (100ug) and [LC416476] (20ug) can be purchased separately from OriGene.

**Detroit 562**

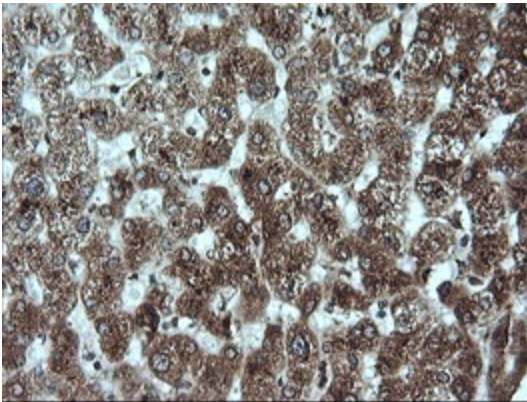


**Hone-1**

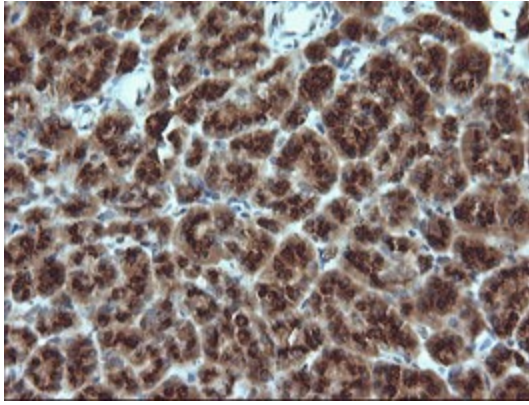


**WB:Gadd45  $\gamma$**

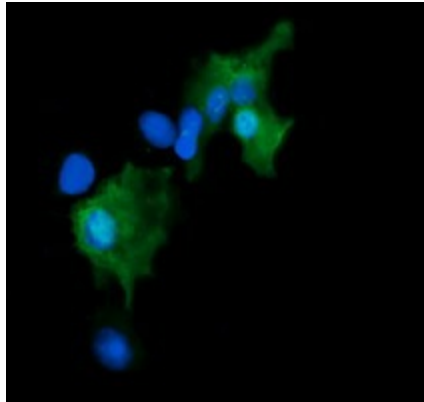
Figure from citation: Western Blot of GADD45G protein level by using anti-GADD45G antibody in human NPC cell lines. [View Citation](#)



Immunohistochemical staining of paraffin-embedded Human liver tissue within the normal limits using anti-GADD45G mouse monoclonal antibody. (Heat-induced epitope retrieval by 10mM citric buffer, pH6.0, 120°C for 3min, [TA505437])



Immunohistochemical staining of paraffin-embedded Human pancreas tissue within the normal limits using anti-GADD45G mouse monoclonal antibody. (Heat-induced epitope retrieval by 10mM citric buffer, pH6.0, 120°C for 3min, [TA505437])



Anti-GADD45G mouse monoclonal antibody ([TA505437]) immunofluorescent staining of COS7 cells transiently transfected by pCMV6-ENTRY GADD45G ([RC201364]).

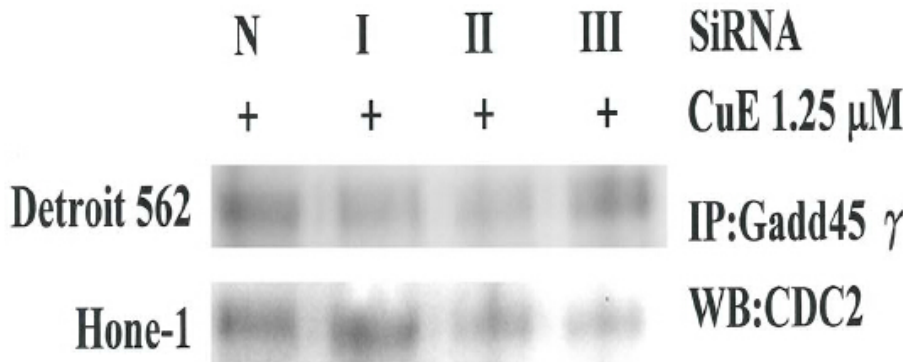


Figure from citation: Immunoprecipitation of GADD45G protein level by using anti-GADD45G antibody in human NPC cell lines. [View Citation](#)

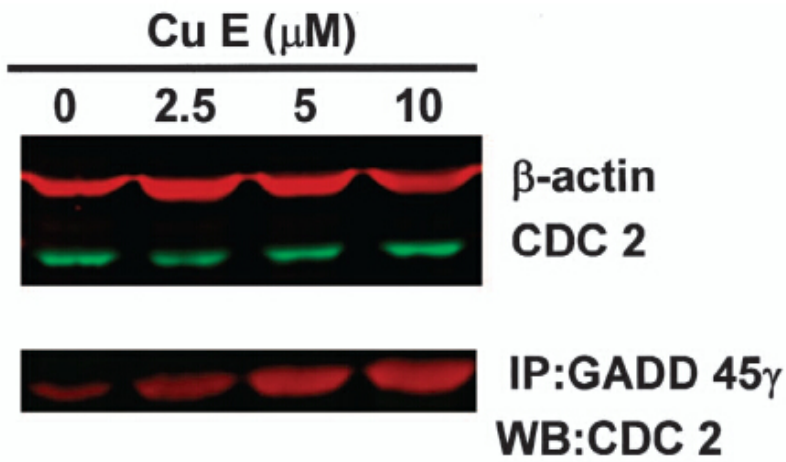


Figure from citation: Immunoprecipitation of GADD45G protein level by using anti-GADD45G antibody in human GBM8401 cells. [View Citation](#)

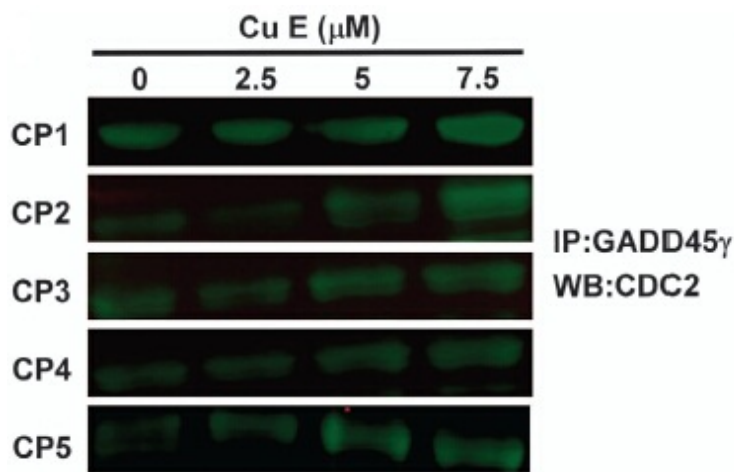


Figure from citation: Immunoprecipitation of GADD45G protein level by using anti-GADD45G antibody in human CRC cells. [View Citation](#)